

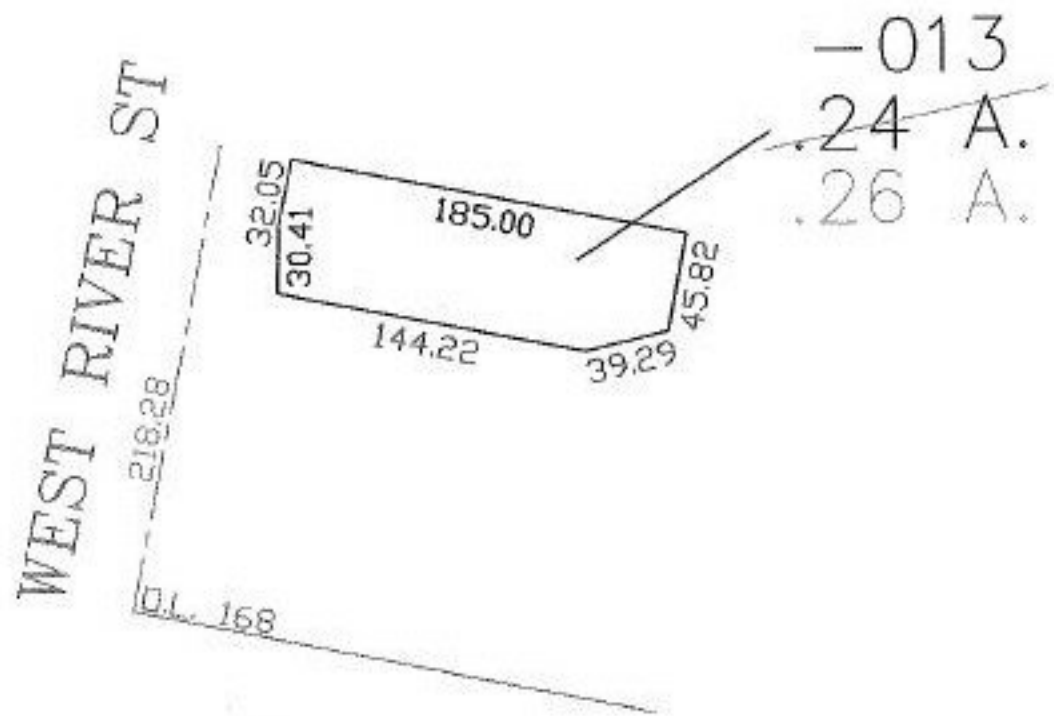
EASTER

PARENT PARCEL: 06-24-168-000-013

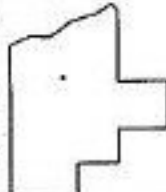
CHILD PARCEL: --SAME--

STARTING POINT: INT CL WEST RIVER ST AND SOUTH LINE O.L. 168

NO. 00960-D



AC. CORR.
 PER SURVEY
 CHARLES P. WARYU



SPLITS/DEEDS PROCESSED
 LORAIN COUNTY TAX MAP DEPARTMENT
 226 MIDDLE AVE. ELYRIA, OHIO

SURVEYED BY: CHARLES P. WARYU
 CLOSURE: 1:10,000
 MAP PAGE(S): 6-84
 APPROVED BY: DRH DATE: 1/9/2004
 SCALE: 1" = 100' PRIOR INSTRUMENT: 20000699432