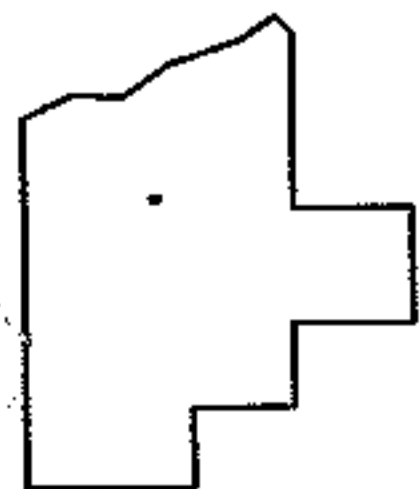
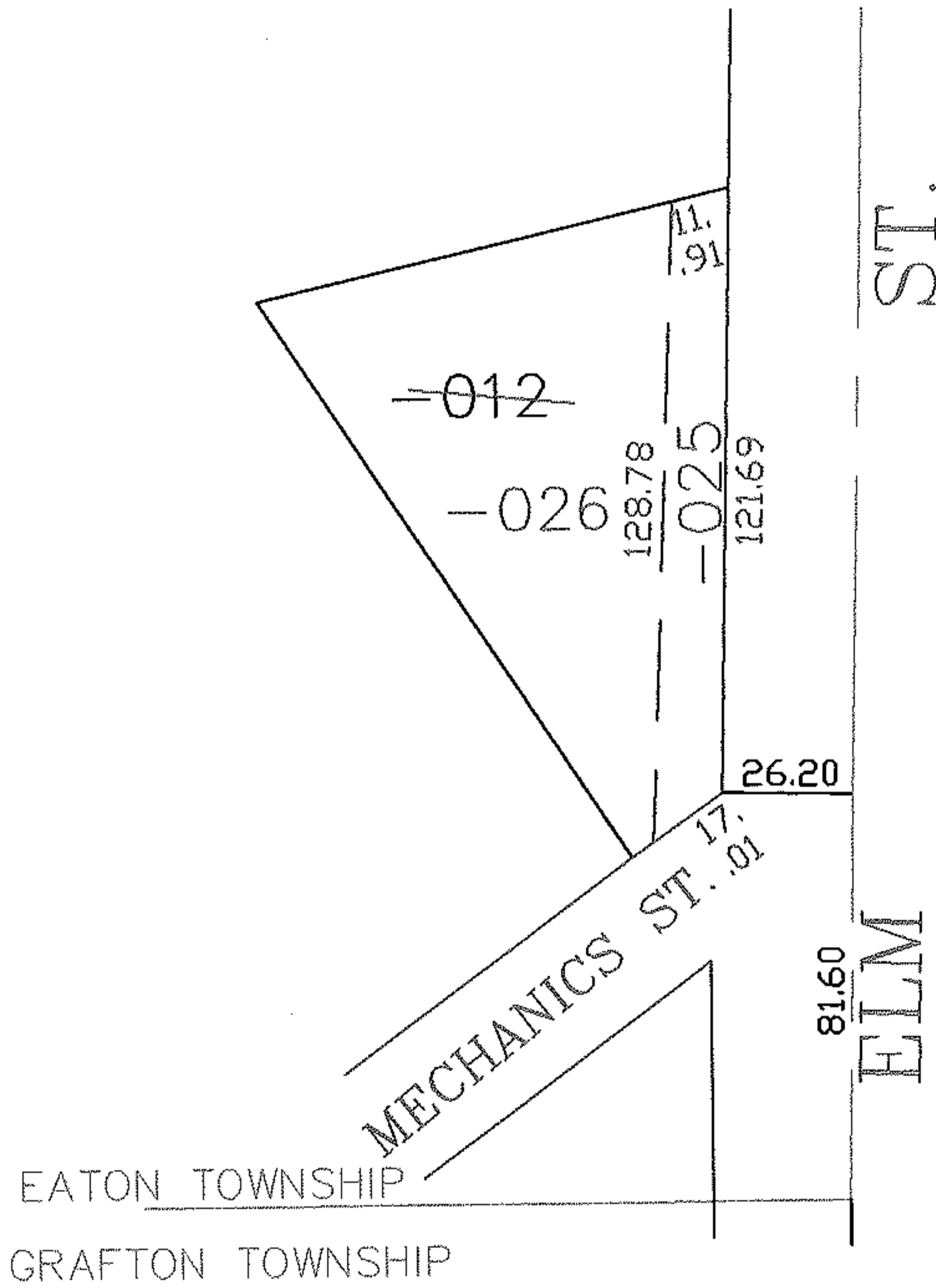
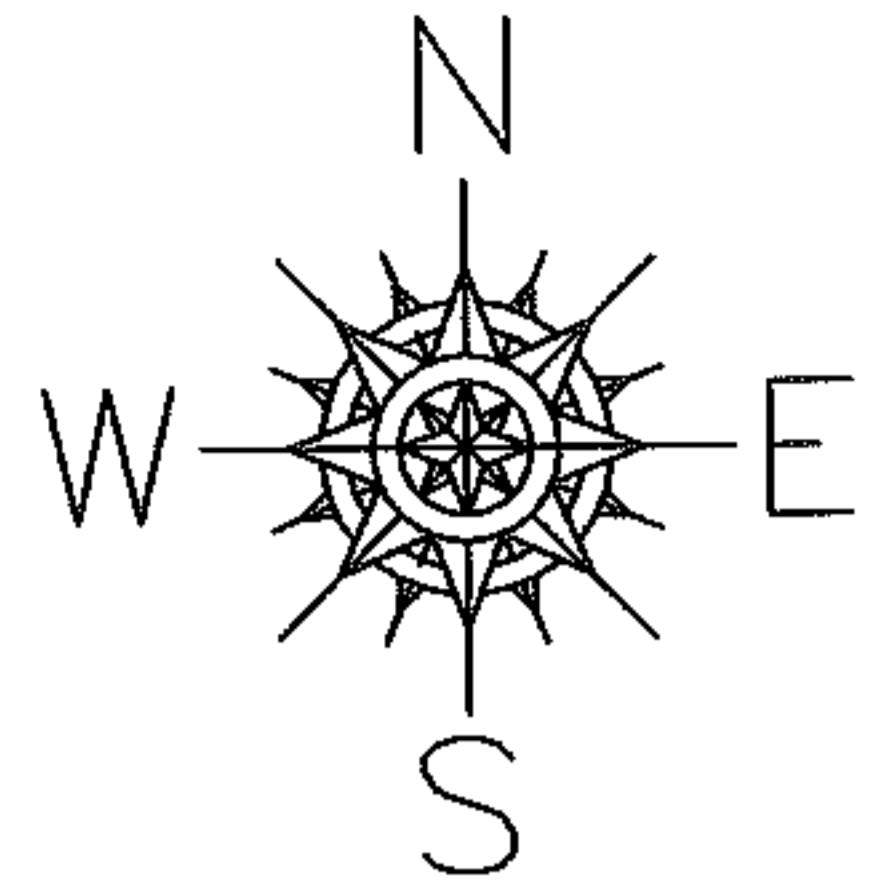


PARENT PARCEL: 11-00-081-105-012

CHILD PARCEL: 11-00-081-105-025, -026

STARTING POINT: CENTERLINE OF ELM ST. & O.L. 81

NO. 00082



SPLITS/DEEDS PROCESSED

LORAIN COUNTY TAX MAP DEPARTMENT
226 MIDDLE AVE. ELYRIA, OHIO

SURVEYED BY: CHARLES P. UNTERREINER

CLOSURE: 0.00 : 10.000

MAP PAGE(S): 11-00-081

APPROVED BY: JAH DATE: 4-6-04

SCALE: 1" = 100' PRIOR INSTRUMENT: PL VL 2/9