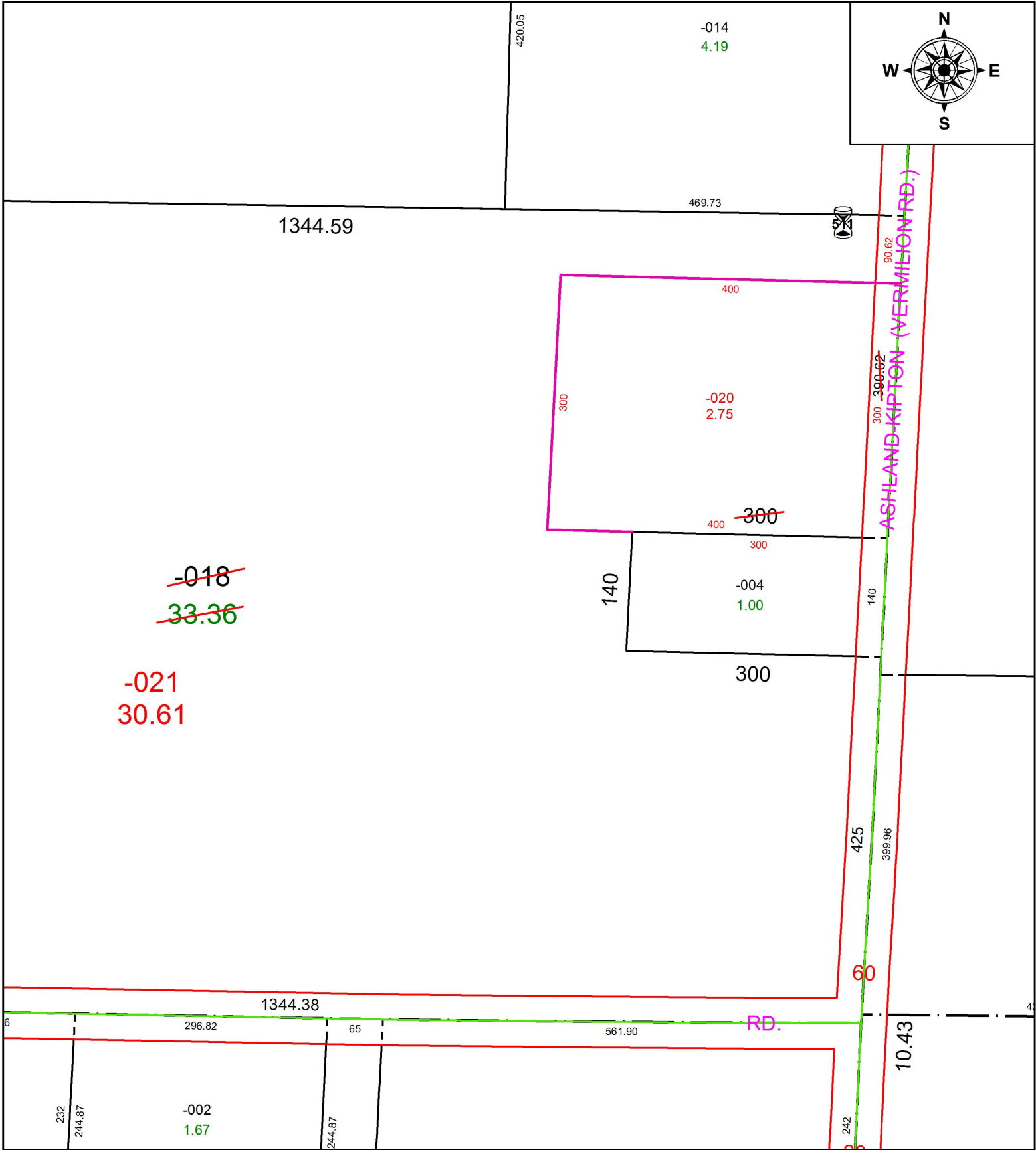


PARENT PARCEL: 13-09-033-000-018

CHILD PARCEL: 13-09-033-000-020, -021

STARTING POINT: INTERSECTION OF C/L OF S.R. 511 AND C/L OF BETTS RD.

19-03999



SPLITS/DEEDS PROCESSED
LORAIN COUNTY TAX MAP DEPARTMENT
226 MIDDLE AVE. ELYRIA, OH

SURVEYED BY: THOMAS A. SIMON

CLOSURE: 1:214743648

MAP PAGE(S): 13-09-033

APPROVED BY: RRM DATE: 7-31-19

SCALE: 1" = 150 PRIOR INSTRUMENT: 20180676870