

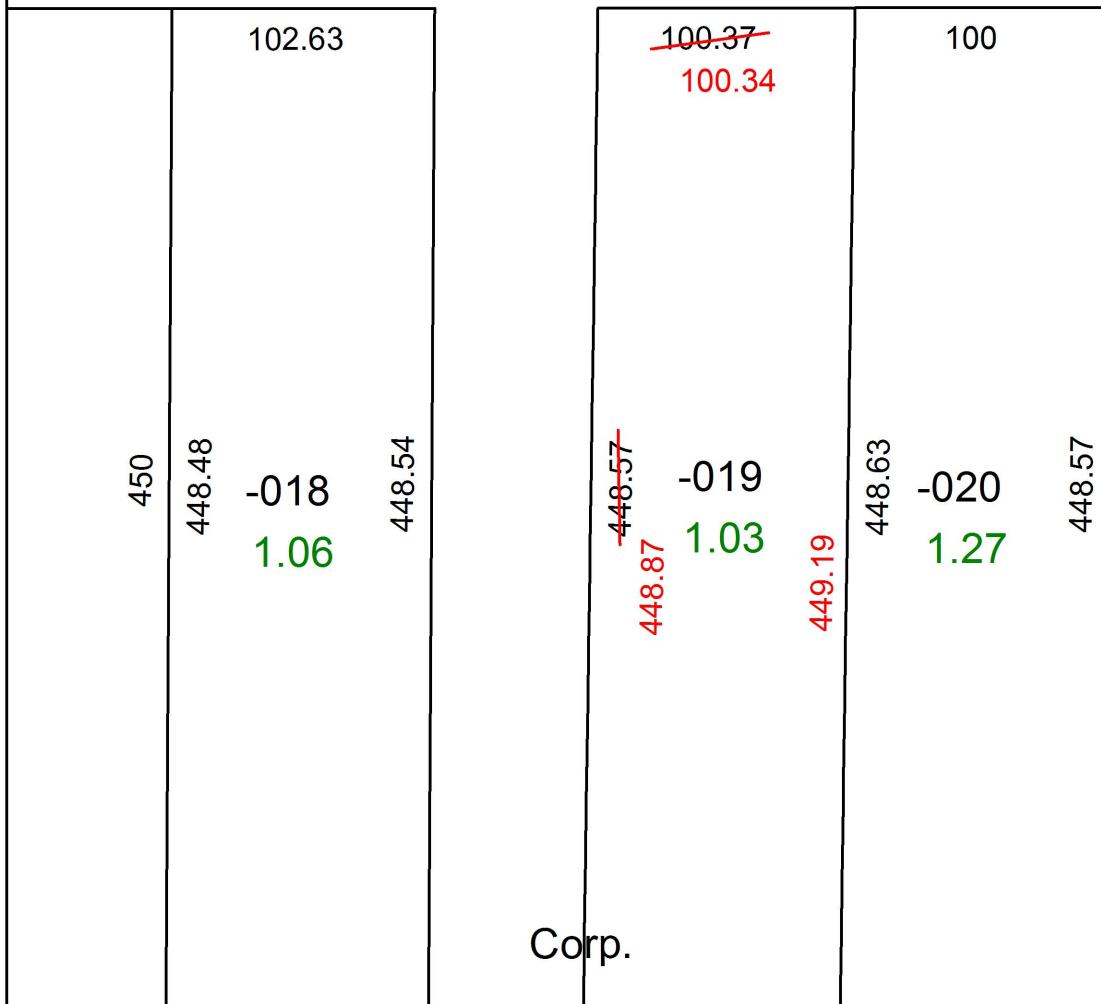
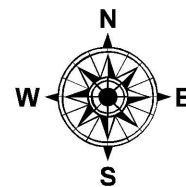
PARENT PARCEL: 14-00-013-000-019

CHILD PARCEL:

STARTING POINT:

SOUTHWEST CORNER OF O.L. 12

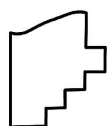
18-03998-D



Corp.



200



SPLITS/DEEDS PROCESSED
 LORAIN COUNTY TAX MAP DEPARTMENT
 226 MIDDLE AVE. ELYRIA, OH

SURVEYED BY: WILLIAM R. WALLACE
 CLOSURE: 1: 247,953
 MAP PAGE(S): 14-00-013
 APPROVED BY: RRM DATE: 12-13-18
 SCALE: 1" = 75' PRIOR INSTRUMENT: OR 1146/106