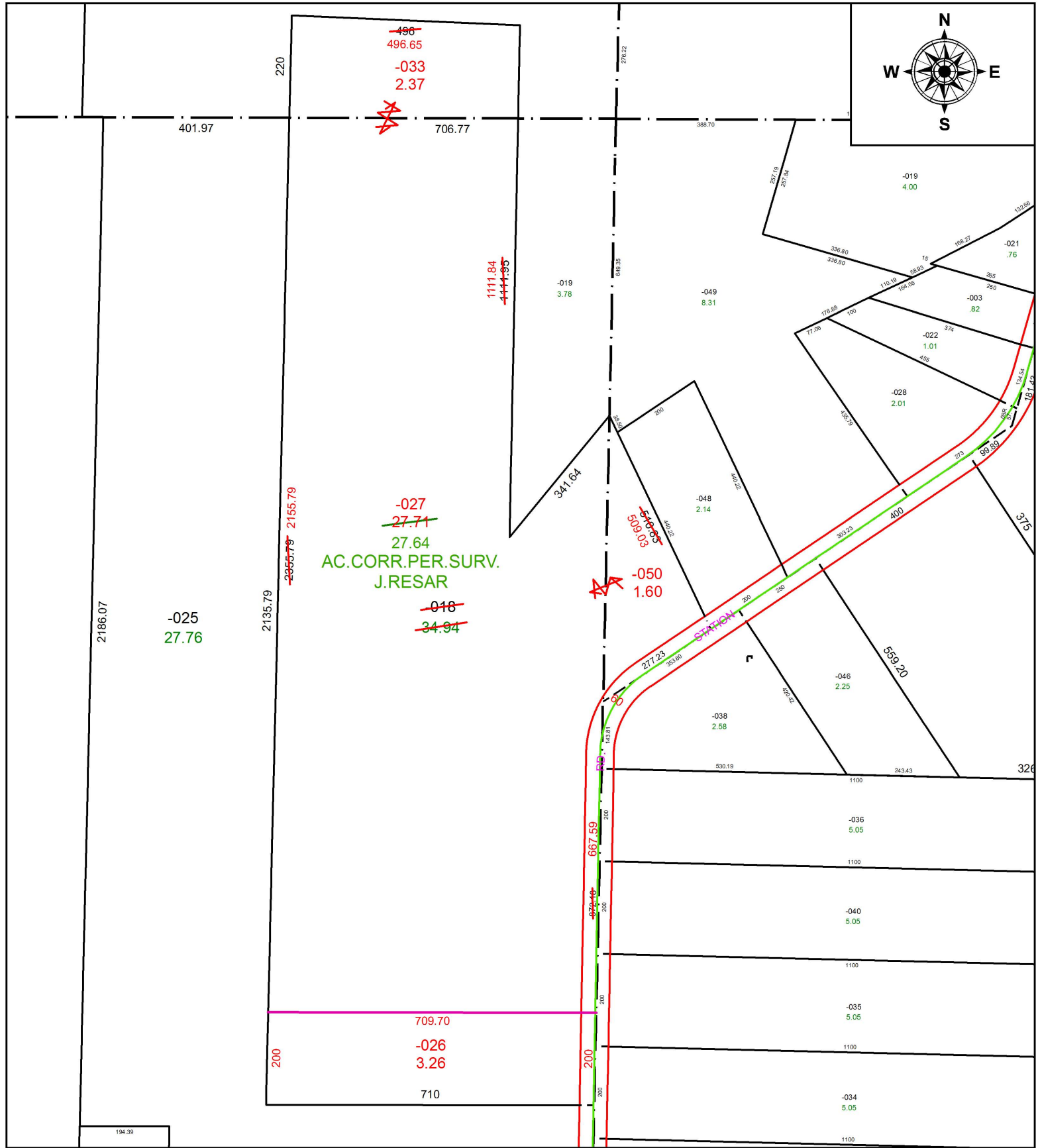


PARENT PARCEL: 12-00-087-000-018

CHILD PARCEL: 12-00-074-000-050, 12-00-086-000-033, 12-00-087-000-026, -027

STARTING POINT: SOUTHEAST CORNER OF O.L. 87

19-03997



~~-027~~
27.71
AC.CORR.PER.SURV.
J.RESAR

~~-025~~
27.76

~~-018~~
~~34.94~~

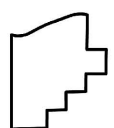
~~-050~~
1.60

~~509.03~~

~~1111.84~~
~~1111.95~~

~~496~~
496.65
~~-033~~
2.37

194.39



SPLITS/DEEDS PROCESSED
LORAIN COUNTY TAX MAP DEPARTMENT
226 MIDDLE AVE. ELYRIA, OH

SURVEYED BY: JAMES RESAR
CLOSURE: 1:295,498
MAP PAGE(S): 12-00-087
APPROVED BY: RRM DATE: 8-16-19
SCALE: 1" = 275 PRIOR INSTRUMENT: OR 75/584