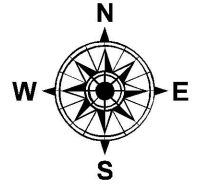
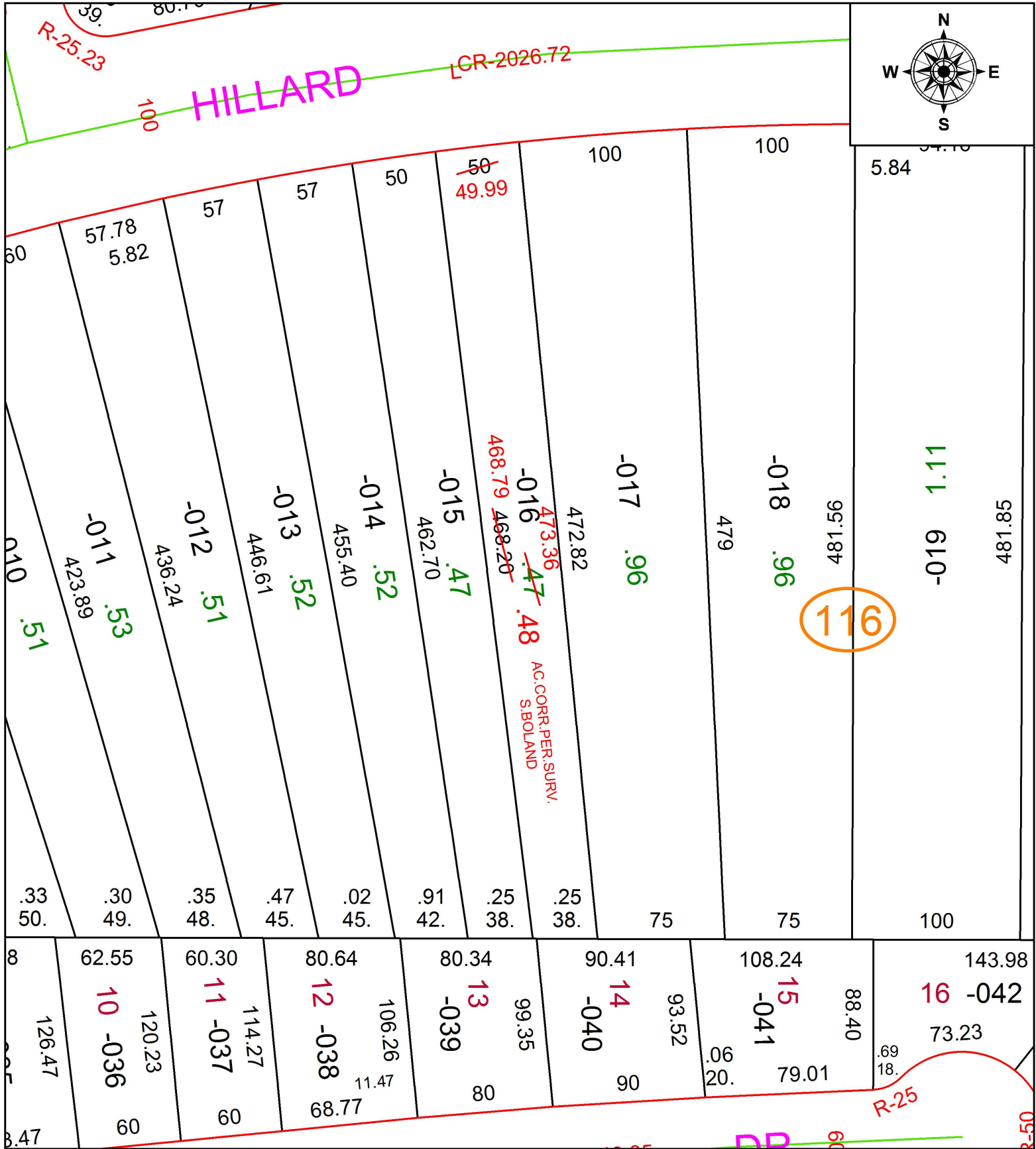


PARENT PARCEL: 06-25-032-116-016

CHILD PARCEL:

STARTING POINT: INTERSECTION OF SOUTH LINE OF HILLARD RD. AND C/L OF ABBE RD,

18-03997-D



116

AC. CORR. PER. SURV.
S. BOLAND

SPLITS/DEEDS PROCESSED
LORAIN COUNTY TAX MAP DEPARTMENT
226 MIDDLE AVE. ELYRIA, OH

SURVEYED BY: SEAN A. BOLAND
CLOSURE: 1: 803,876
MAP PAGE(S): 6-25-032
APPROVED BY: RRM DATE: 12-13-18
SCALE: 1" = 75' PRIOR INSTRUMENT: 20170629042