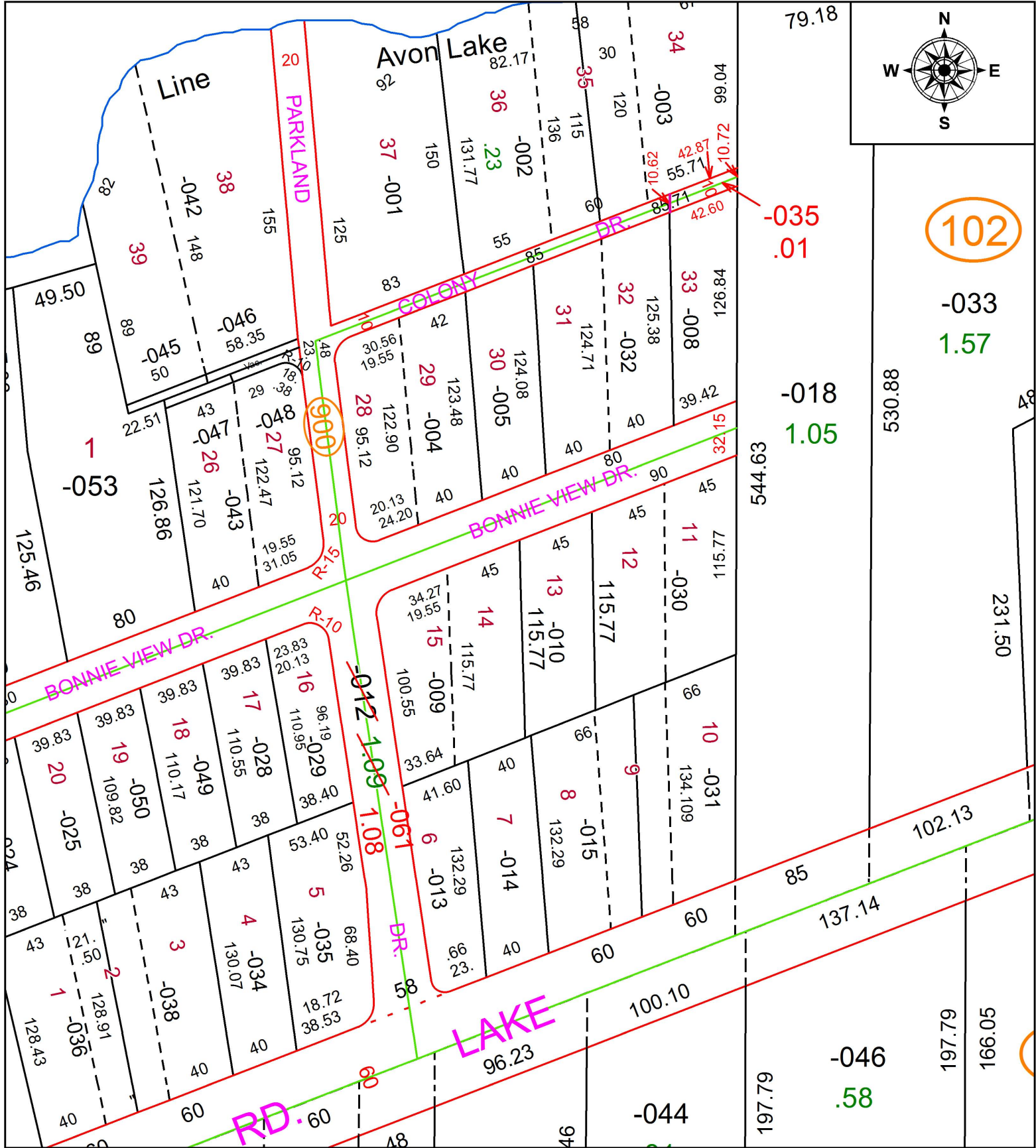


PARENT PARCEL: 04-00-007-900-012
 CHILD PARCEL: 04-00-007-102-035, 04-00-007-900-061
 STARTING POINT: INTERSECTION OF WEST LINE OF PARKLAND DR. AND NORTH LINE OF COLONY DR.

19-03996



SPLITS/DEEDS PROCESSED
 LORAIN COUNTY TAX MAP DEPARTMENT
 226 MIDDLE AVE. ELYRIA, OH

SURVEYED BY: JAMES T. SAYLER
 CLOSURE: 1:18,407
 MAP PAGE(S): 4-00-007
 APPROVED BY: RRM DATE: 8-1-19
 SCALE: 1" = 75' PRIOR INSTRUMENT: DV 771/123