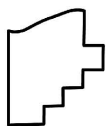
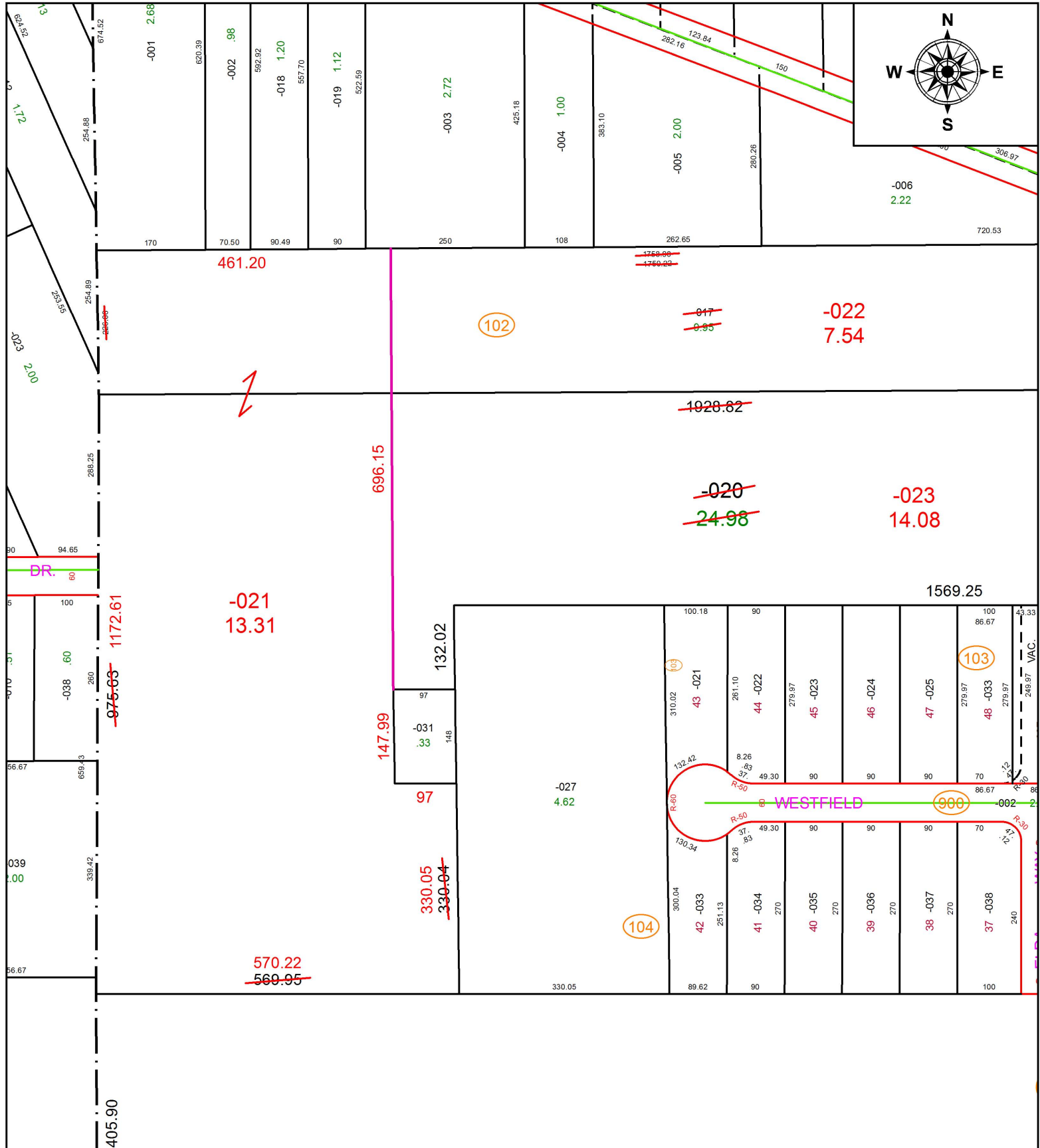


PARENT PARCEL: 07-00-026-102-017, -020

CHILD PARCEL: 07-00-026-102-021 THRU -023

STARTING POINT: INTERSECTION OF C/L OF SUGAR RIDGE RD. AND EAST LINE OF O.L.35

19-03994



SPLITS/DEEDS PROCESSED
 LORAIN COUNTY TAX MAP DEPARTMENT
 226 MIDDLE AVE. ELYRIA, OH

SURVEYED BY: STEVEN L. MULLANEY

CLOSURE: 1:579,153

MAP PAGE(S): 7-00-026

APPROVED BY: RRM DATE: 7-16-19

SCALE: 1" = 200 PRIOR INSTRUMENT: DV 1044/425