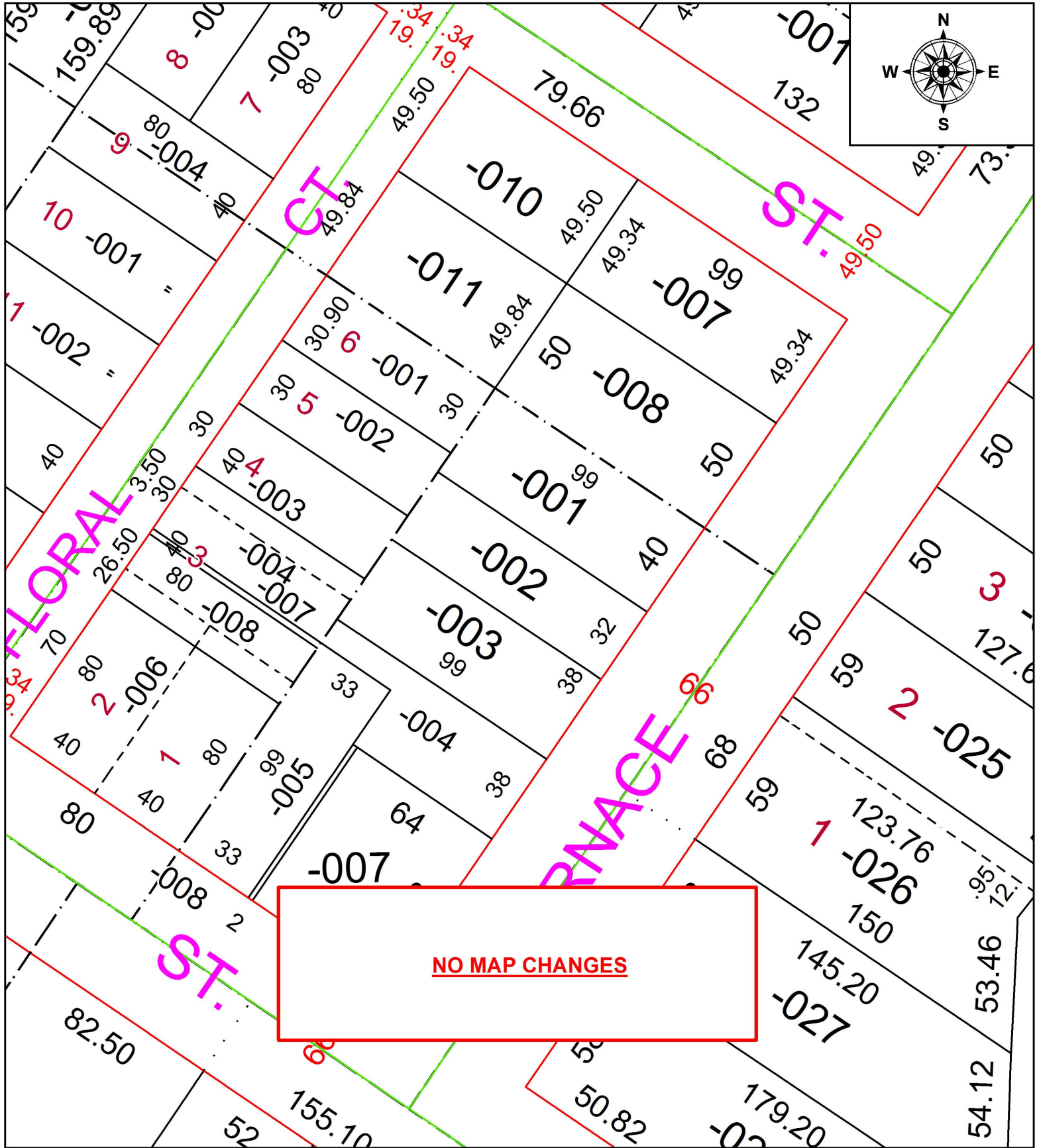


PARENT PARCEL: 06-24-130-000-002

CHILD PARCEL:

STARTING POINT: INTERSECTION OF SOUTH LINE OF MONROE ST. AND WEST LINE OF FURNACE ST.

18-03994-D



NO MAP CHANGES



SPLITS/DEEDS PROCESSED
LORAIN COUNTY TAX MAP DEPARTMENT
226 MIDDLE AVE. ELYRIA, OH

SURVEYED BY:	JOHN W. WELSH		
CLOSURE:	1:2147483648		
MAP PAGE(S):	6-24-130		
APPROVED BY:	RRM	DATE:	12-12-18
SCALE:	1" = 50	PRIOR INSTRUMENT:	20180690886