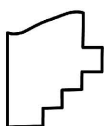
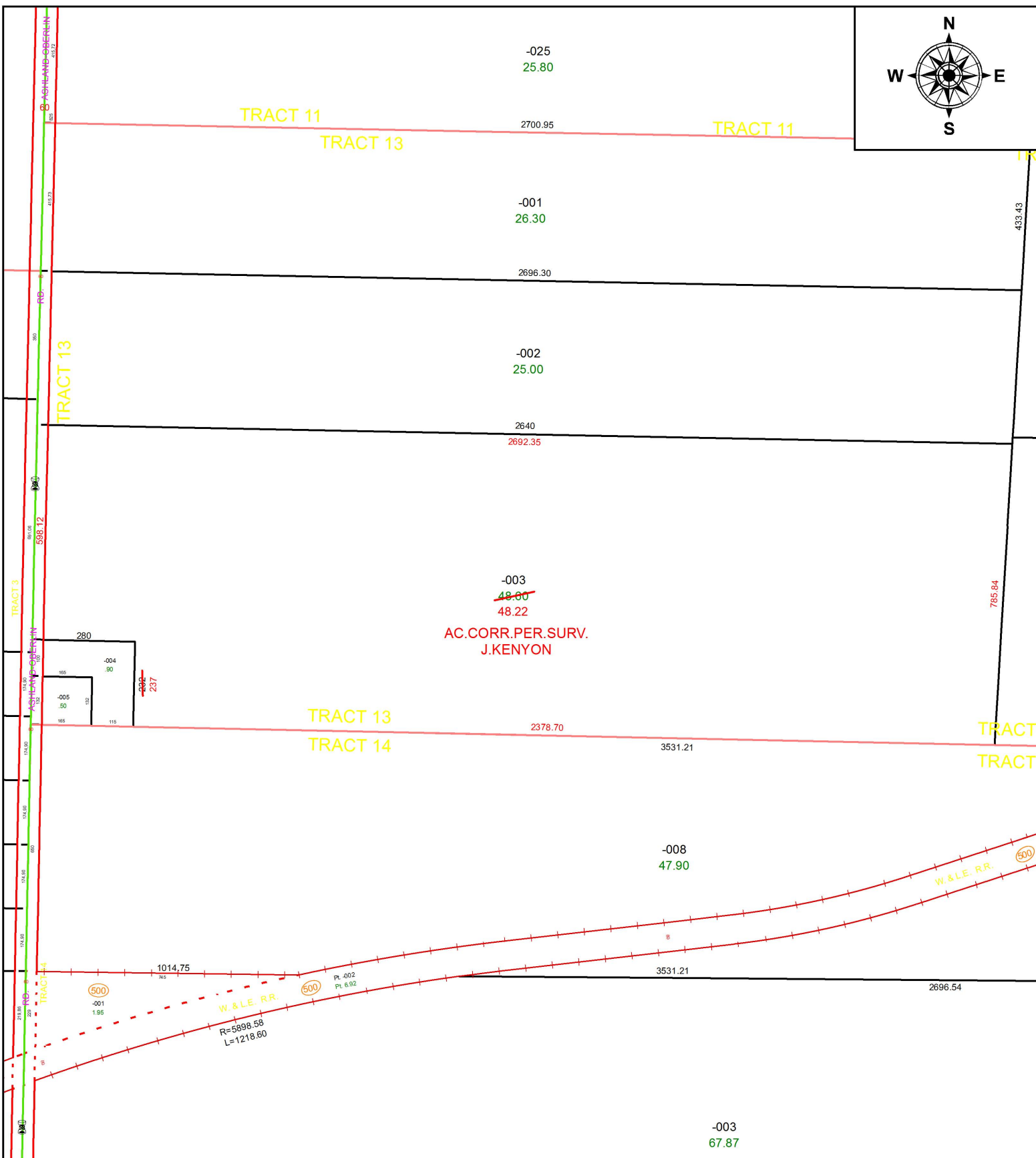
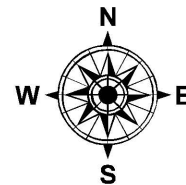


PARENT PARCEL: 21-13-000-000-003

CHILD PARCEL:

STARTING POINT: SOUTHWEST CORNER OF TRACT 13

18-03993-C



SPLITS/DEEDS PROCESSED
 LORAIN COUNTY TAX MAP DEPARTMENT
 226 MIDDLE AVE. ELYRIA, OH

SURVEYED BY: JAMES E. KENYON
 CLOSURE: 1: 547,846
 MAP PAGE(S): 21-13-000
 APPROVED BY: RRM DATE: 12-11-18
 SCALE: 1" = 350 PRIOR INSTRUMENT: 20180252122