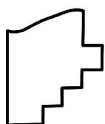
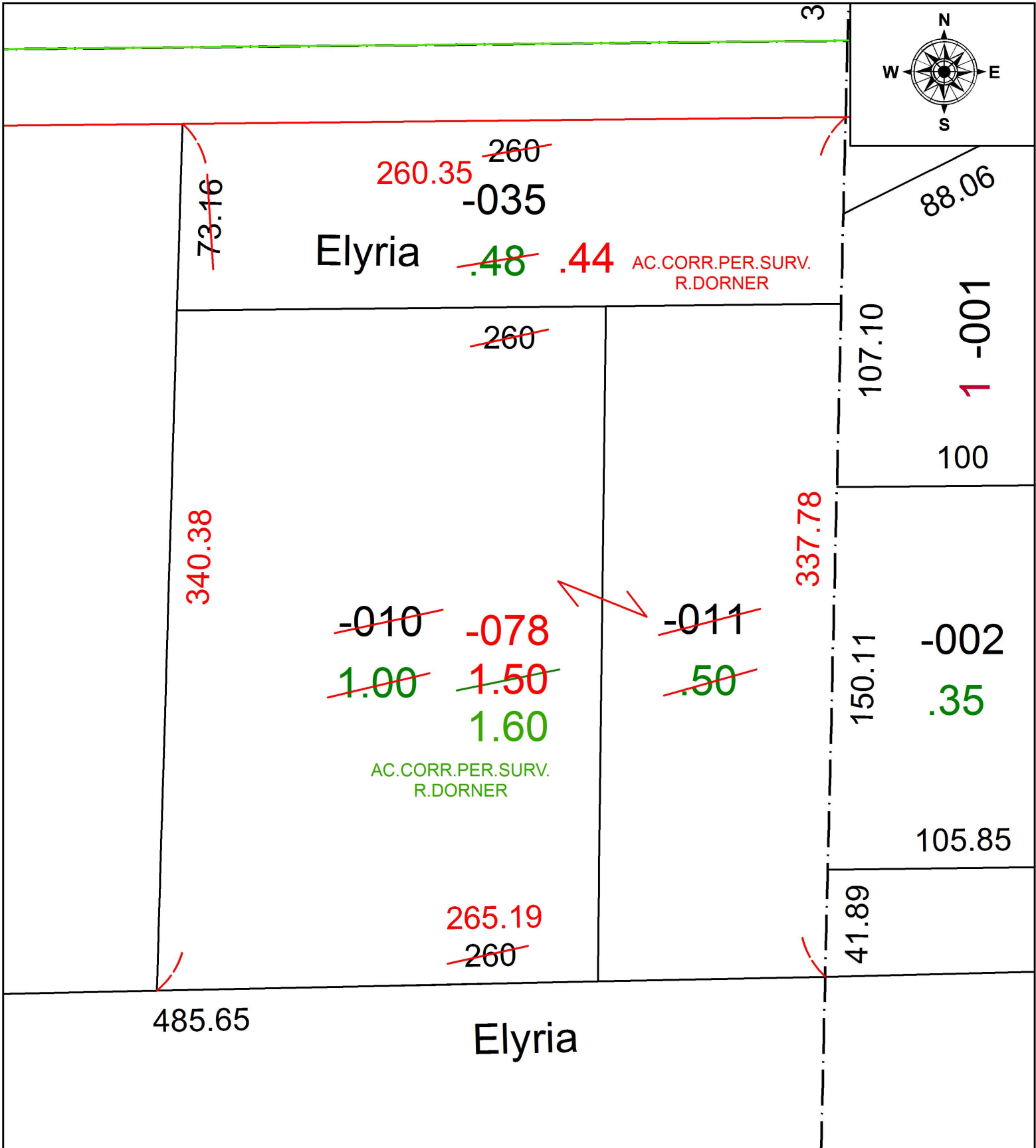


PARENT PARCEL: 06-23-009-102-010, -011, -035

CHILD PARCEL: 06-23-009-102-035, -078

STARTING POINT: INTERSECTION OF C/L OF FREEDOM CT. AND C/L OF SCHADDEN RD.

19-03991



SPLITS/DEEDS PROCESSED
 LORAIN COUNTY TAX MAP DEPARTMENT
 226 MIDDLE AVE. ELYRIA, OH

SURVEYED BY: ROBERT A. DORNER

CLOSURE: 1:192,765

MAP PAGE(S): 6-23-009

APPROVED BY: RRM DATE: 7-12-19

SCALE: 1" = 50 PRIOR INSTRUMENT: 20180686191