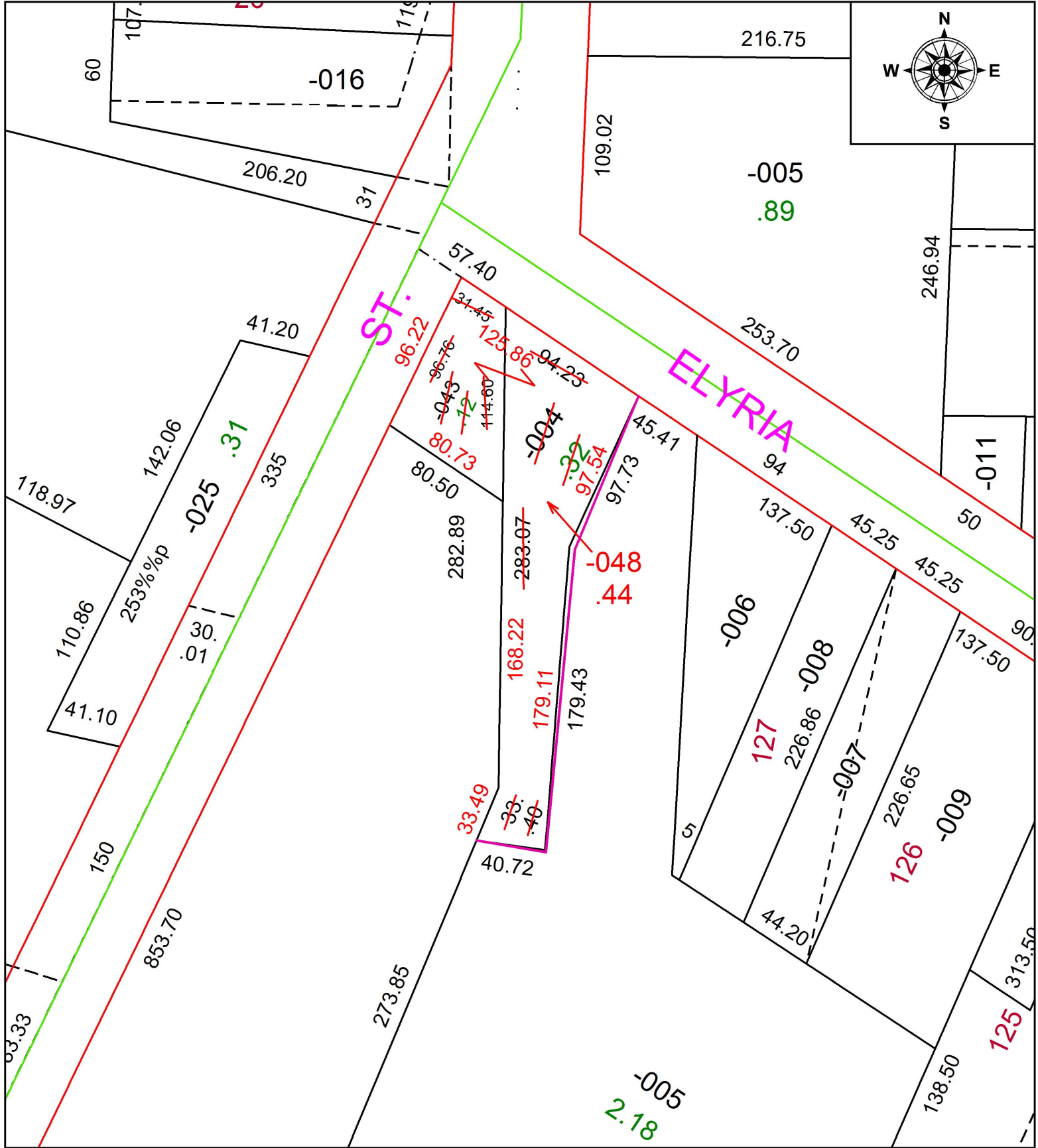


PARENT PARCEL: 05-00-024-122-004, -043

CHILD PARCEL: 05-00-024-122-048

STARTING POINT: INTERSECTION OF C/L OF S. MAIN ST. AND C/L OF ELYRIA AVE.

19-03990



**SPLITS/DEEDS PROCESSED**  
 LORAIN COUNTY TAX MAP DEPARTMENT  
 226 MIDDLE AVE. ELYRIA, OH

SURVEYED BY: TIMOHTY D. HOZALSKI

CLOSURE: 1:118,287

MAP PAGE(S): 5-00-024

APPROVED BY: RRM DATE: 7-12-19

SCALE: 1" = 75' PRIOR INSTRUMENT: 20180692641