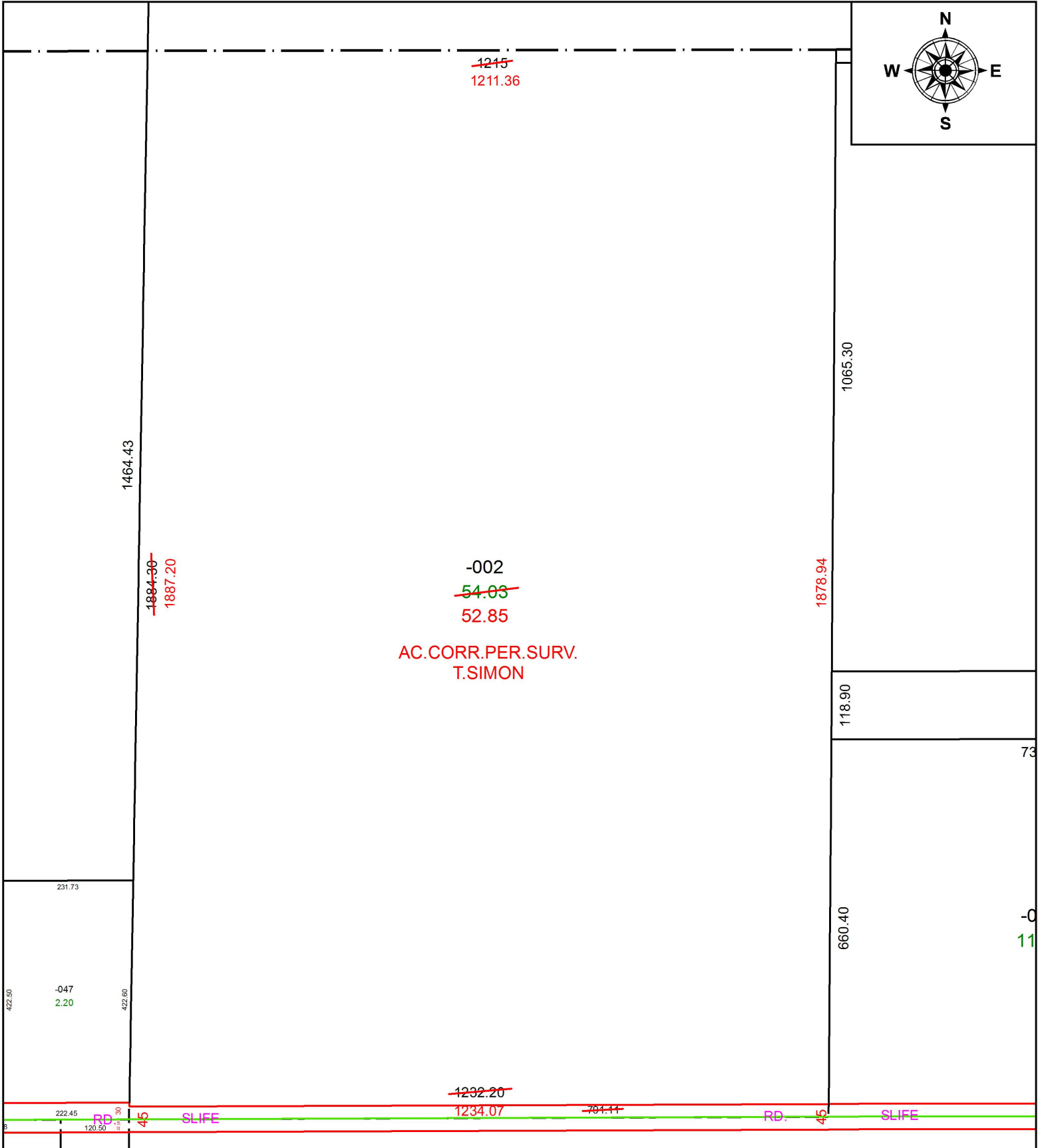
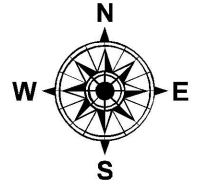


PARENT PARCEL: 10-00-017-000-002

CHILD PARCEL:

STARTING POINT: INTERSECTION OF C/L OF SLIFE RD. AND WEST LINE OF SEC. 17

18-03990-D



SPLITS/DEEDS PROCESSED
 LORAIN COUNTY TAX MAP DEPARTMENT
 226 MIDDLE AVE. ELYRIA, OH

SURVEYED BY: THOMAS A. SIMON

CLOSURE: 1: 1,063,931

MAP PAGE(S): 10-00-017

APPROVED BY: RRM DATE: 12-10-18

SCALE: 1" = 225 PRIOR INSTRUMENT: N/A