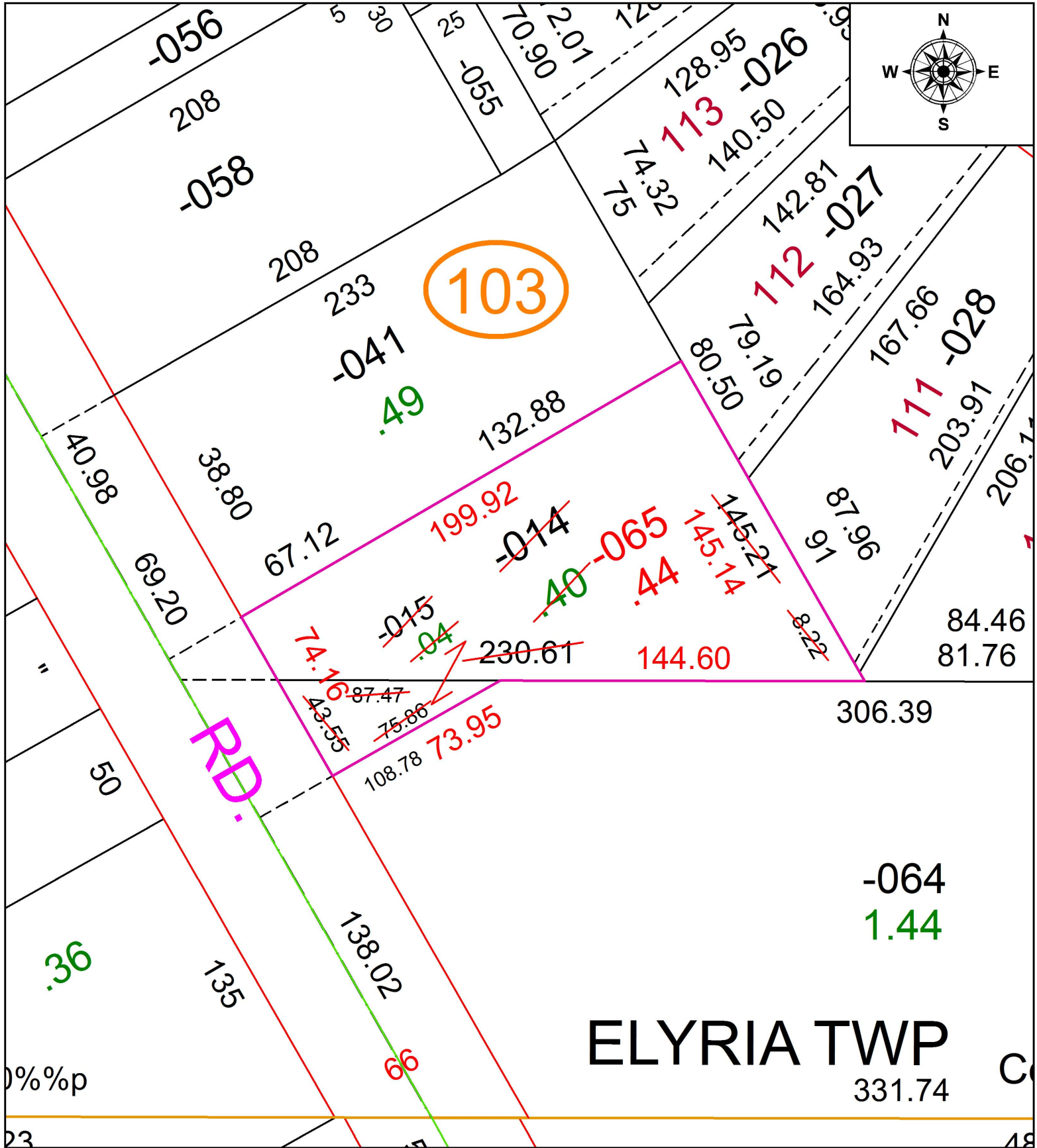


PARENT PARCEL: 06-25-003-103-014, -015

CHILD PARCEL: 06-25-003-103-065

STARTING POINT: INTERSECTION OF C/L OF EAST RIVER ST. AND SOUTH LINE OF O.L.3

19-03989

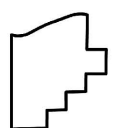


103

RD.

ELYRIA TWP

-064
1.44



SPLITS/DEEDS PROCESSED
LORAIN COUNTY TAX MAP DEPARTMENT
226 MIDDLE AVE. ELYRIA, OH

SURVEYED BY:	THOMAS A. SIMON		
CLOSURE:	1:70,767		
MAP PAGE(S):	6-25-003		
APPROVED BY:	RRM	DATE:	7-11-19
SCALE:	1" = 50	PRIOR INSTRUMENT:	20190717338