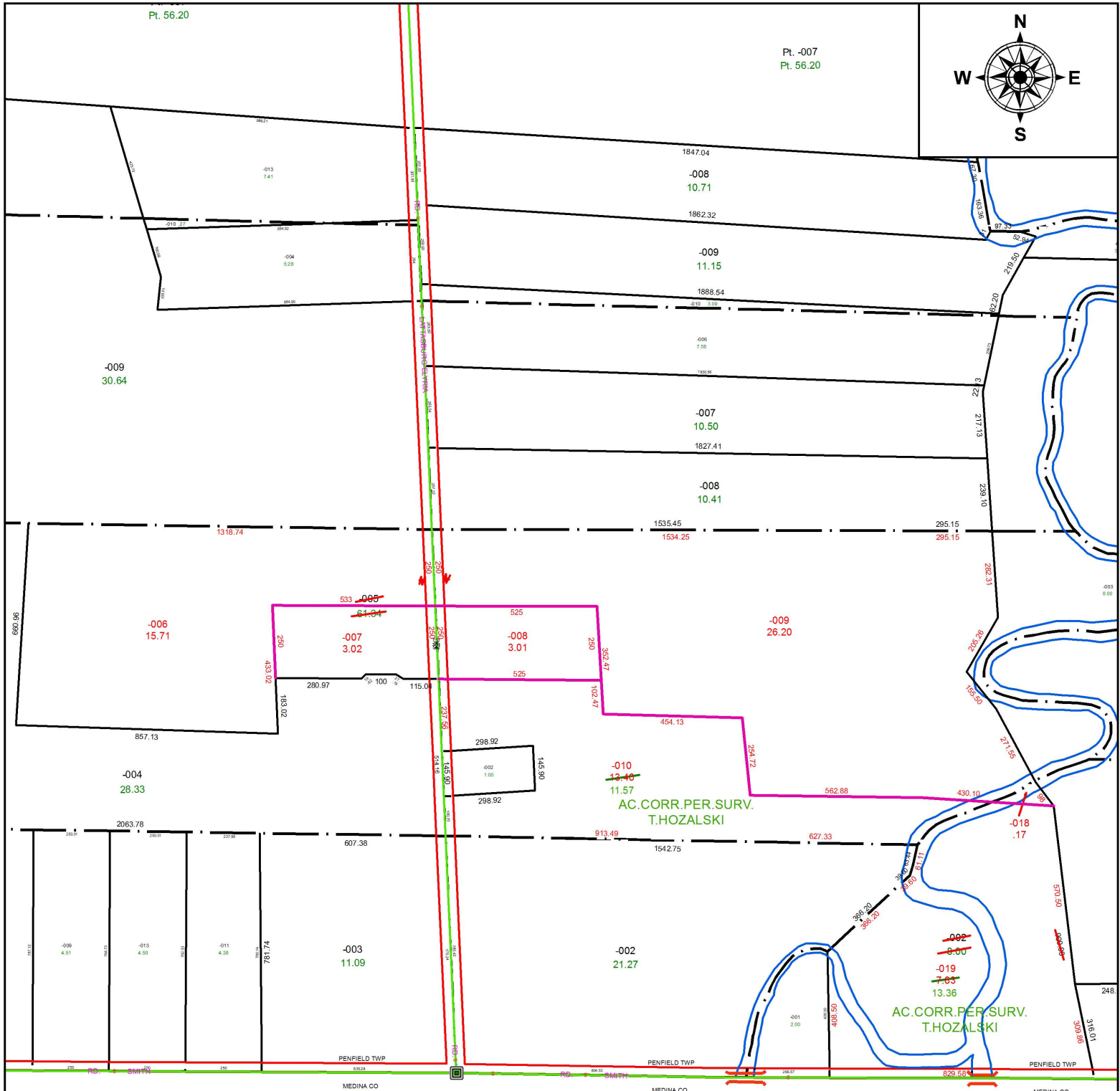


PARENT PARCEL: 19-01-023-000-005, 19-01-025-000-002

CHILD PARCEL: 19-01-023-000-006 THRU -010, 19-01-025-000-018, -019

STARTING POINT: INTERSECTION OF C/L OF S.R.301 AND NORTH LINE OF O.L.23

19-03984



SPLITS/DEEDS PROCESSED
 LORAIN COUNTY TAX MAP DEPARTMENT
 226 MIDDLE AVE. ELYRIA, OH

SURVEYED BY: TIMOTHY D. HOZALSKI

CLOSURE: 1: 628,967

MAP PAGE(S): 19-01-023

APPROVED BY: RRM **DATE:** 6-19-19

SCALE: 1" = 450 **PRIOR INSTRUMENT:** 20180685126