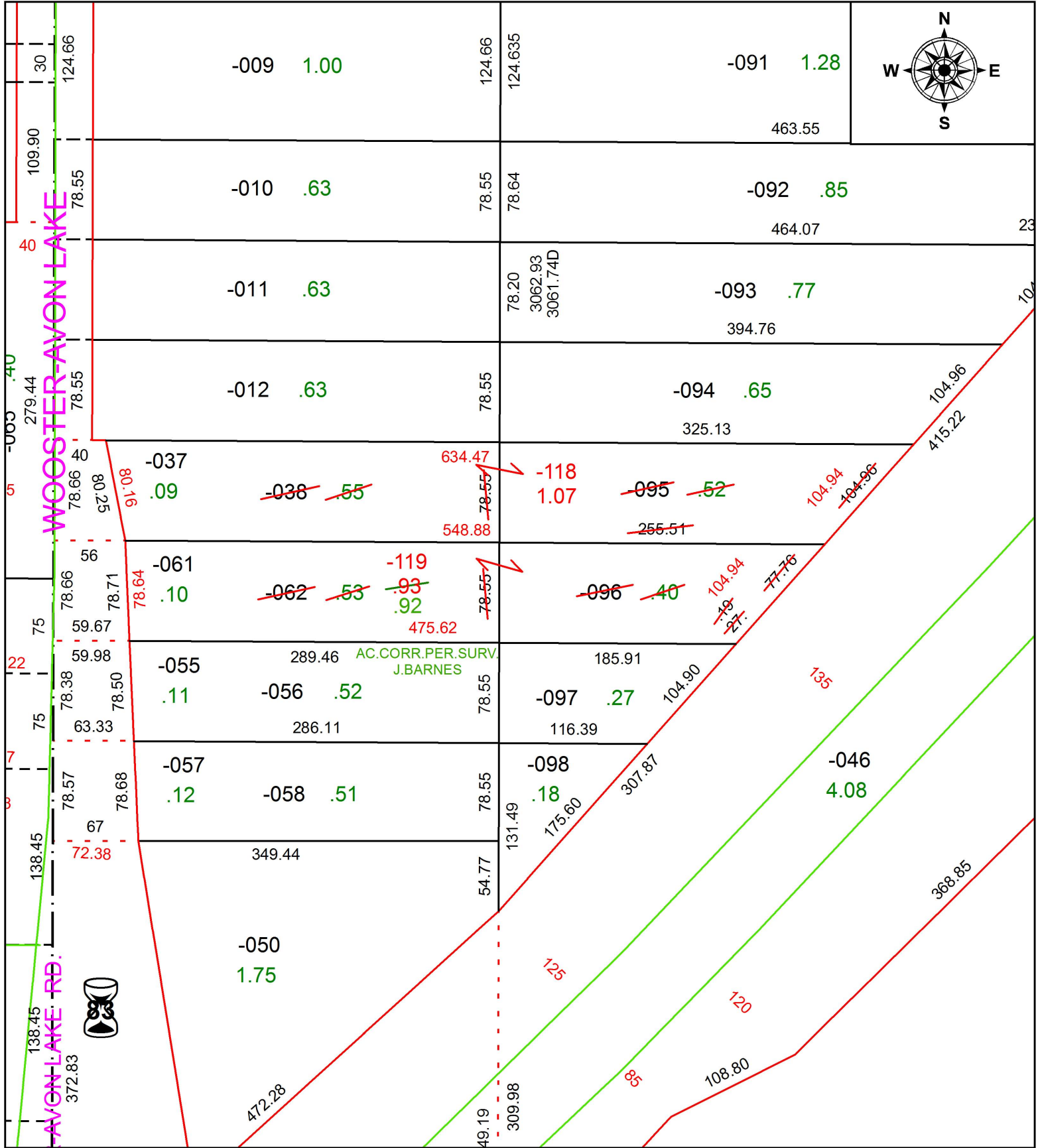


PARENT PARCEL: 07-00-024-101-038, -062, -095, -096

CHILD PARCEL: 07-00-024-101-118, -119

STARTING POINT: INTERSECTION OF C/L OF S.R. 83 AND C/L OF CHESTNUT RIDGE RD.

19-03983



SPLITS/DEEDS PROCESSED
 LORAIN COUNTY TAX MAP DEPARTMENT
 226 MIDDLE AVE. ELYRIA, OH

SURVEYED BY: JAMES DALE BARNES
CLOSURE: 1:734,471
MAP PAGE(S): 7-00-024
APPROVED BY: RRM **DATE:** 6-18-19
SCALE: 1" = 100 **PRIOR INSTRUMENT:** OR 1181/291