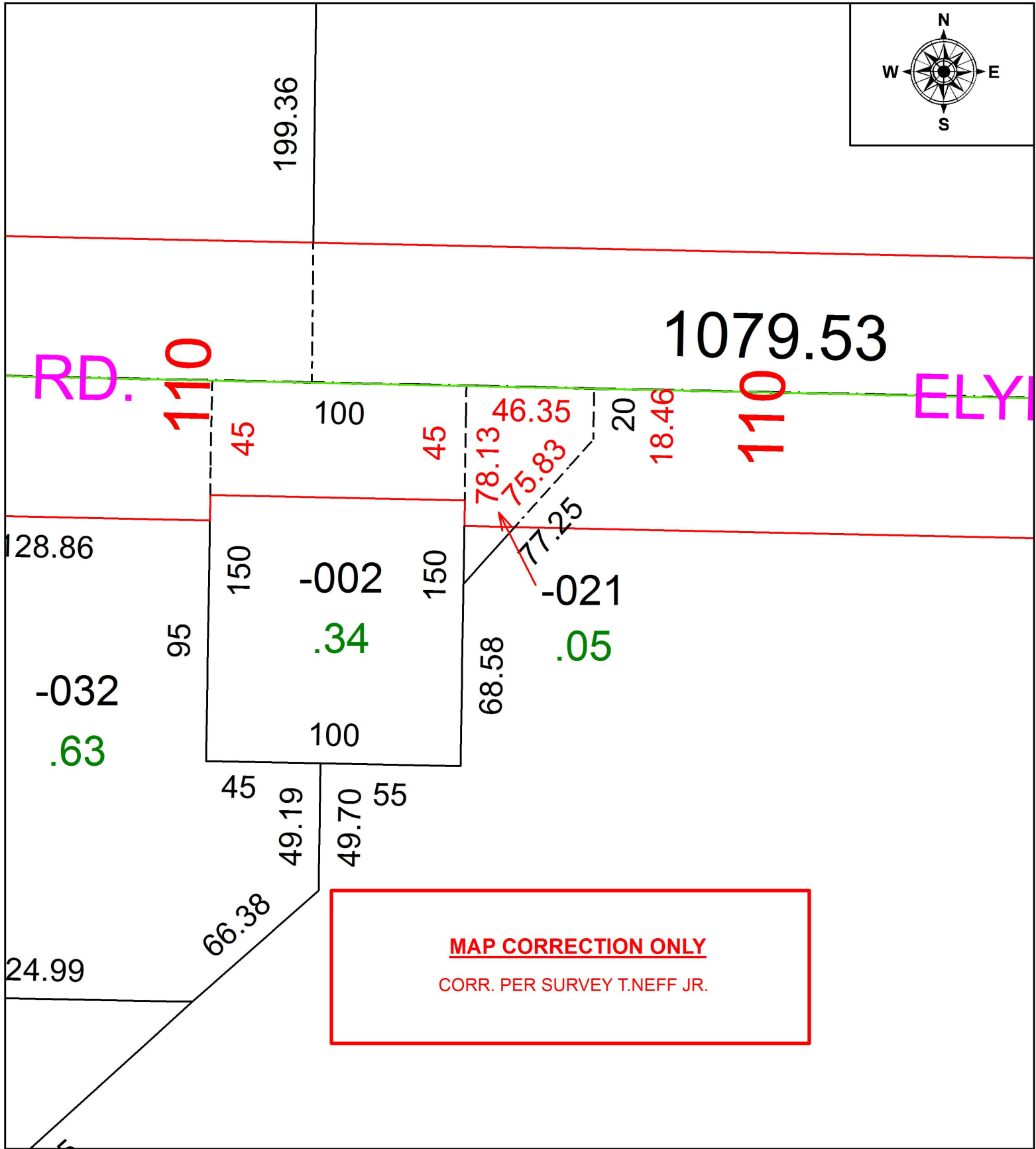


PARENT PARCEL: 11-00-016-000-021

CHILD PARCEL:

STARTING POINT: INTERSECTION OF C/L OF REED RD. AND C/L OF S.R. 82

18-03981-C



**MAP CORRECTION ONLY**  
CORR. PER SURVEY T.NEFF JR.



**SPLITS/DEEDS PROCESSED**  
LORAIN COUNTY TAX MAP DEPARTMENT  
226 MIDDLE AVE. ELYRIA, OH

SURVEYED BY: THOMAS J. NEFF JR.

CLOSURE: 1: 258,921

MAP PAGE(S): 11-00-016

APPROVED BY: RRM DATE: 11-15-18

SCALE: 1" = 50 PRIOR INSTRUMENT: 20160571788