

PARENT PARCEL: 18-00-027-106-076

CHILD PARCEL:

STARTING POINT: INTERSECTION OF C/L OF S. MAIN ST. AND C/L OF HERRICK AVE.

18-03977-D



AVE

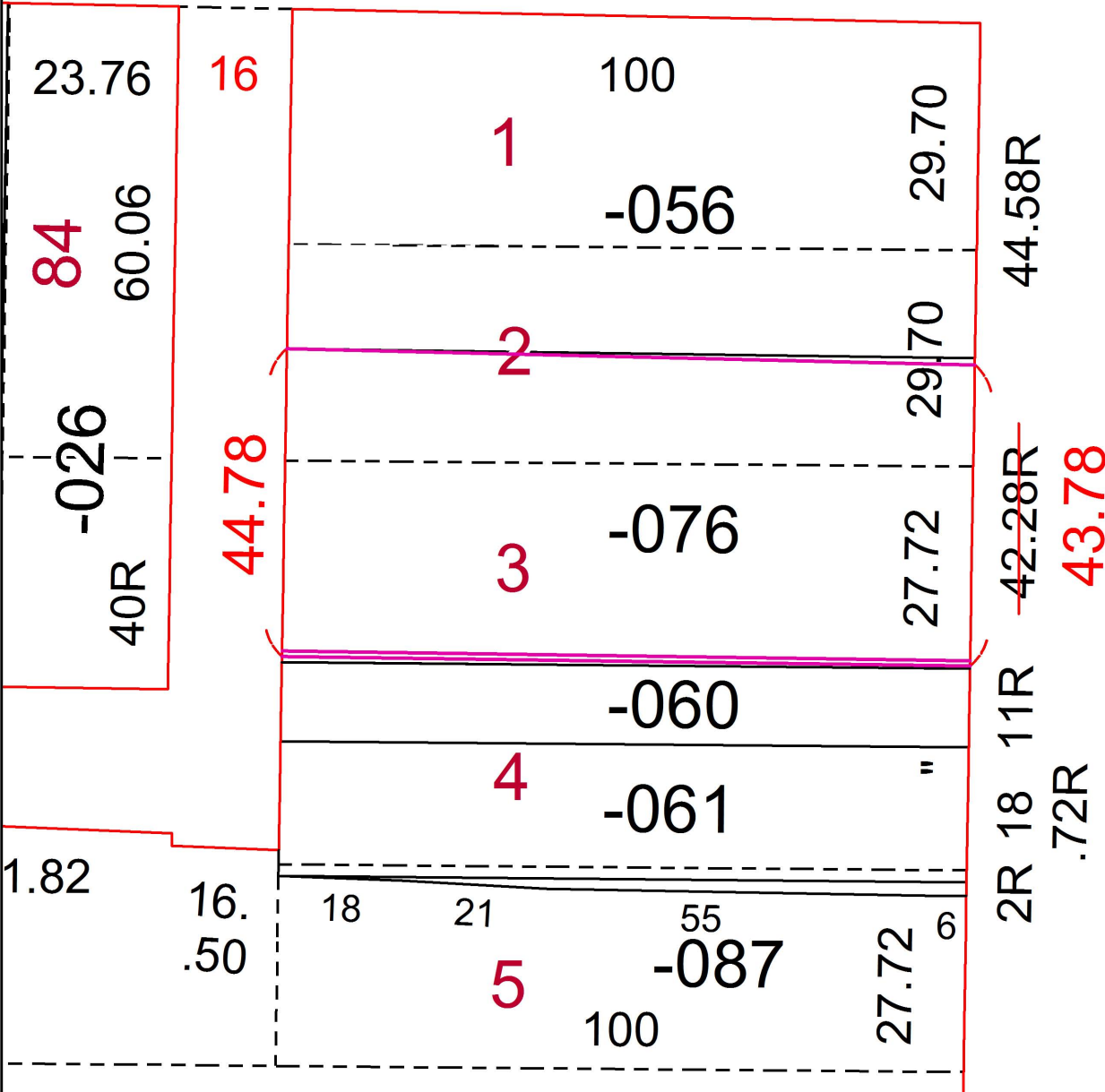
FRONTAGE CORRECTION

43.78 X 100

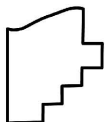
~~42.28 X 100~~

PER SURVEY BY T.HOZALSKI

24



ST.



SPLITS/DEEDS PROCESSED
LORAIN COUNTY TAX MAP DEPARTMENT
226 MIDDLE AVE. ELYRIA, OH

SURVEYED BY: TIMOTHY D. HOZALSKI

CLOSURE: 1: 68,039

MAP PAGE(S): 18-00-027

APPROVED BY: RRM DATE: 11-8-18

SCALE: 1" = 25' PRIOR INSTRUMENT: 20130477696