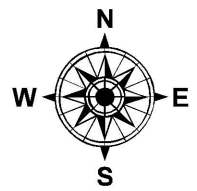
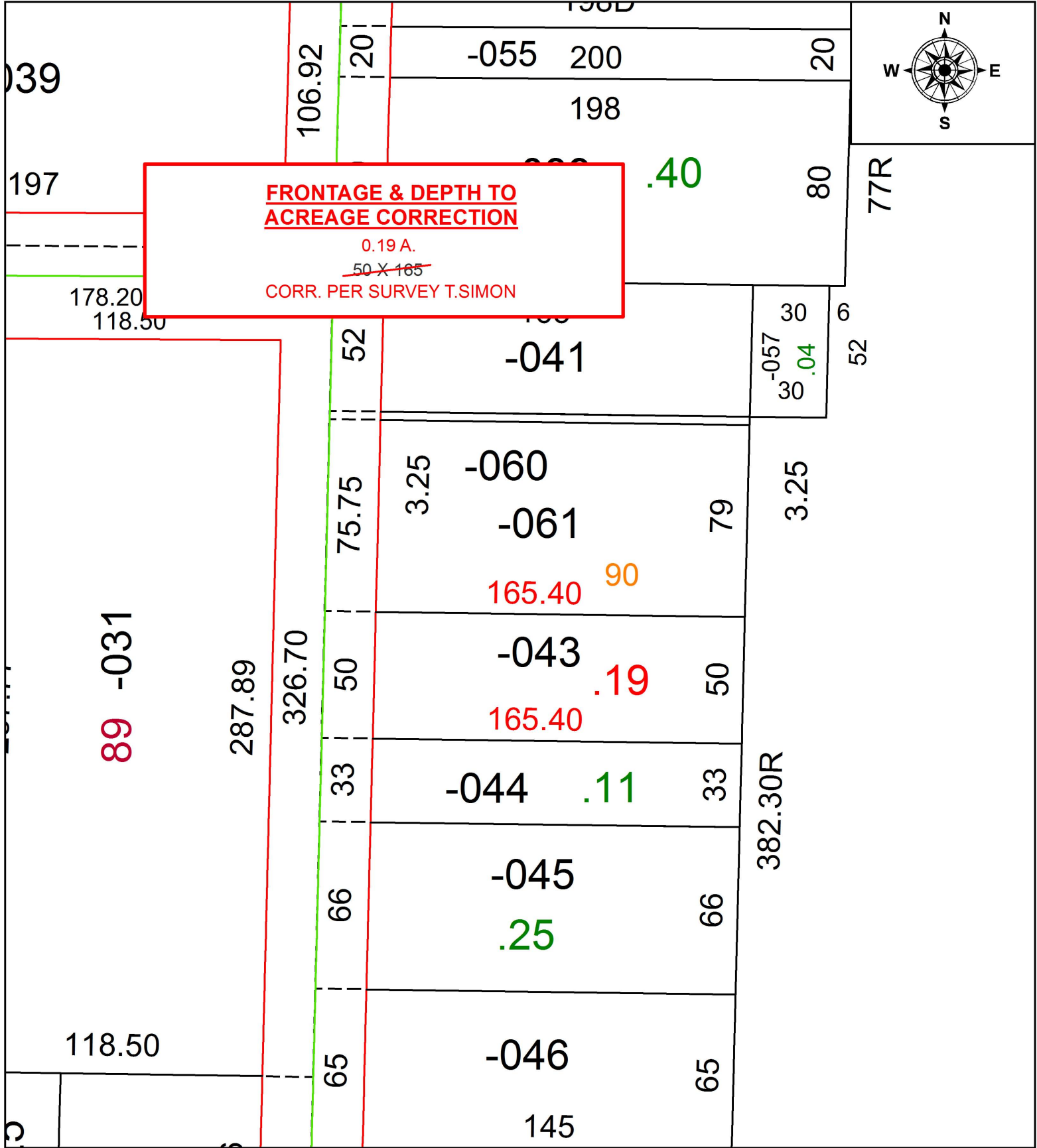


PARENT PARCEL: 09-00-086-110-043

CHILD PARCEL:

STARTING POINT: INTERSECTION OF C/L OF EAST VINE ST. AND C/L OF SOUTH PARK ST.

18-03974-C



**SPLITS/DEEDS PROCESSED**  
 LORAIN COUNTY TAX MAP DEPARTMENT  
 226 MIDDLE AVE. ELYRIA, OH

SURVEYED BY: THOMAS A. SIMON  
 CLOSURE: 1: 2147483648  
 MAP PAGE(S): 9-00-086  
 APPROVED BY: RRM DATE: 10-31-18  
 SCALE: 1" = 50 PRIOR INSTRUMENT: 20140503801