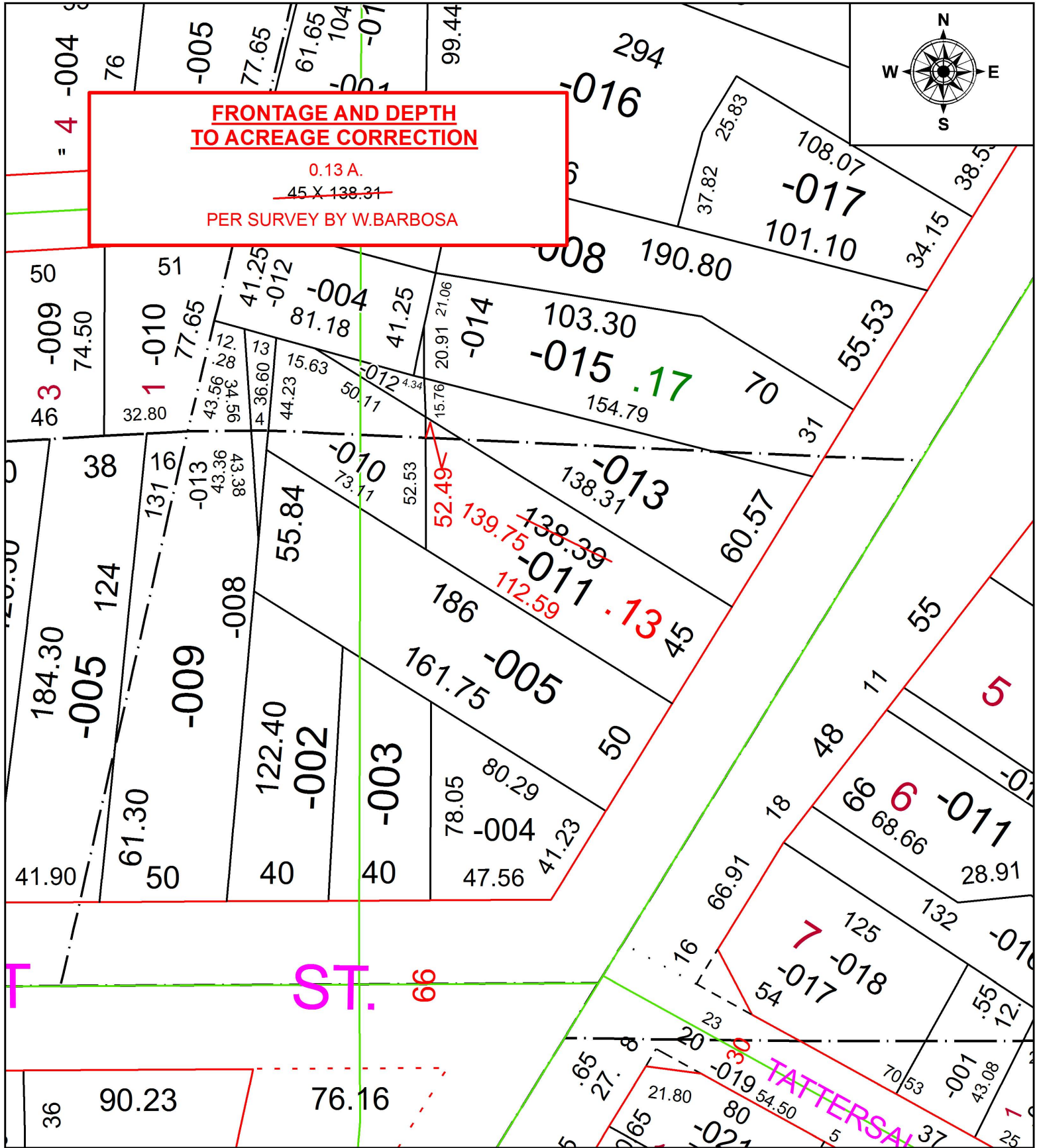


PARENT PARCEL: 06-24-073-000-011

CHILD PARCEL:

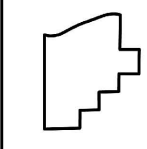
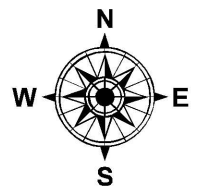
STARTING POINT: INTERSECTION OF C/L OF FREMONT ST. AND C/L OF WEST RIVER RD.

18-03973-D



**FRONTAGE AND DEPTH  
TO ACREAGE CORRECTION**

0.13 A.  
~~45 X 138.31~~  
PER SURVEY BY W.BARBOSA



**SPLITS/DEEDS PROCESSED**  
LORAIN COUNTY TAX MAP DEPARTMENT  
226 MIDDLE AVE. ELYRIA, OH

SURVEYED BY: WILFREDO BARBOSA  
CLOSURE: 1: 76,206  
MAP PAGE(S): 6-24-073  
APPROVED BY: RRM DATE: 10-30-18  
SCALE: 1" = 50 PRIOR INSTRUMENT: 20160600929