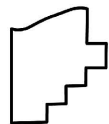
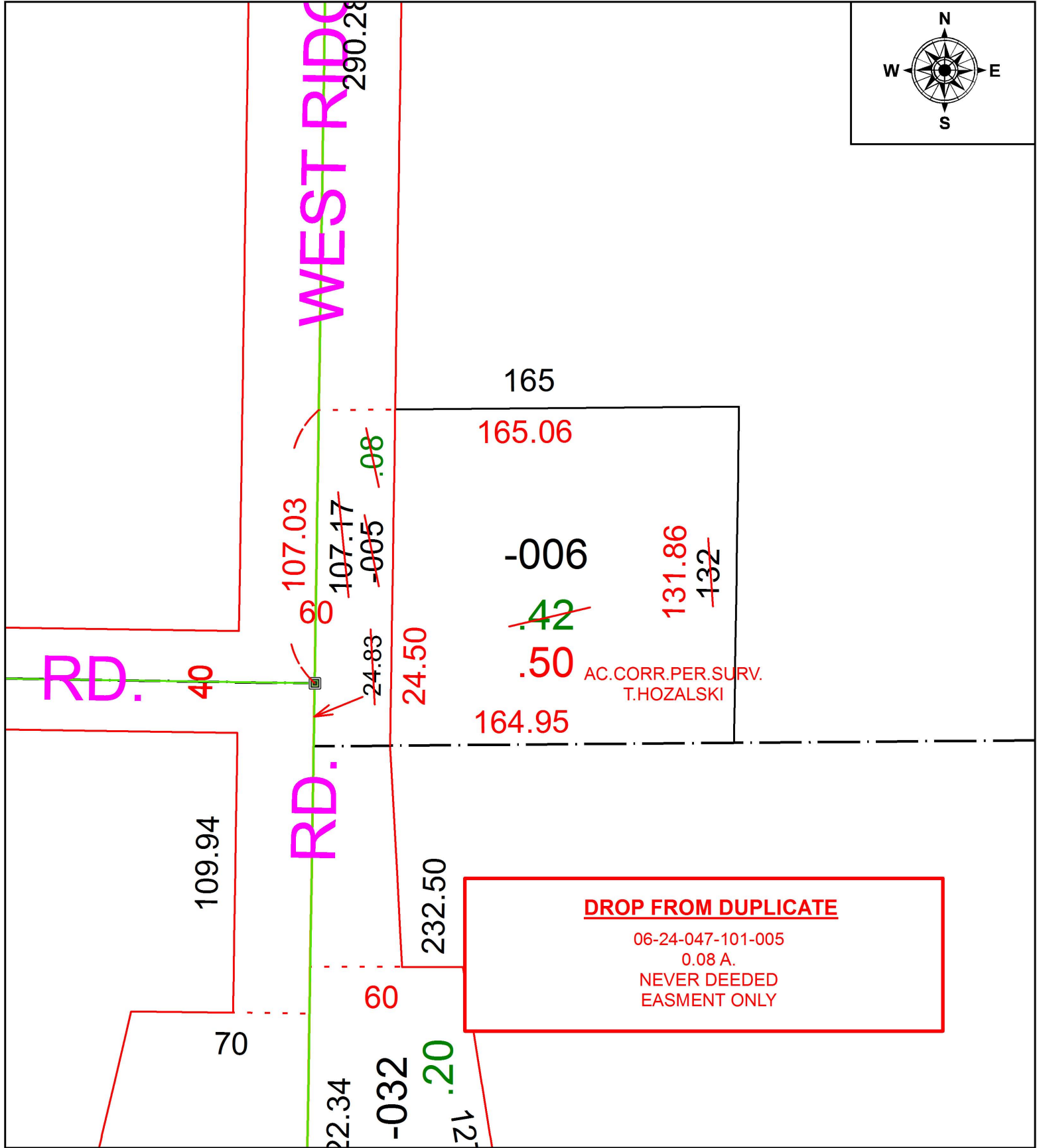
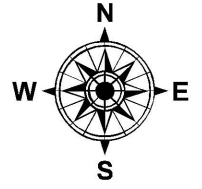


PARENT PARCEL: 06-24-047-101-005, -006

CHILD PARCEL: 06-24-047-101-006

STARTING POINT: INTERSECTION OF C/L OF WEST RIVER RD. AND C/L OF STANG RD.

18-03971-C



**SPLITS/DEEDS PROCESSED**  
 LORAIN COUNTY TAX MAP DEPARTMENT  
 226 MIDDLE AVE. ELYRIA, OH

SURVEYED BY: TIMOTHY D. HOZALSKI  
 CLOSURE: 1: 218,176  
 MAP PAGE(S): 6-24-047  
 APPROVED BY: RRM DATE: 10-29-18  
 SCALE: 1" = 50 PRIOR INSTRUMENT: 20180686164