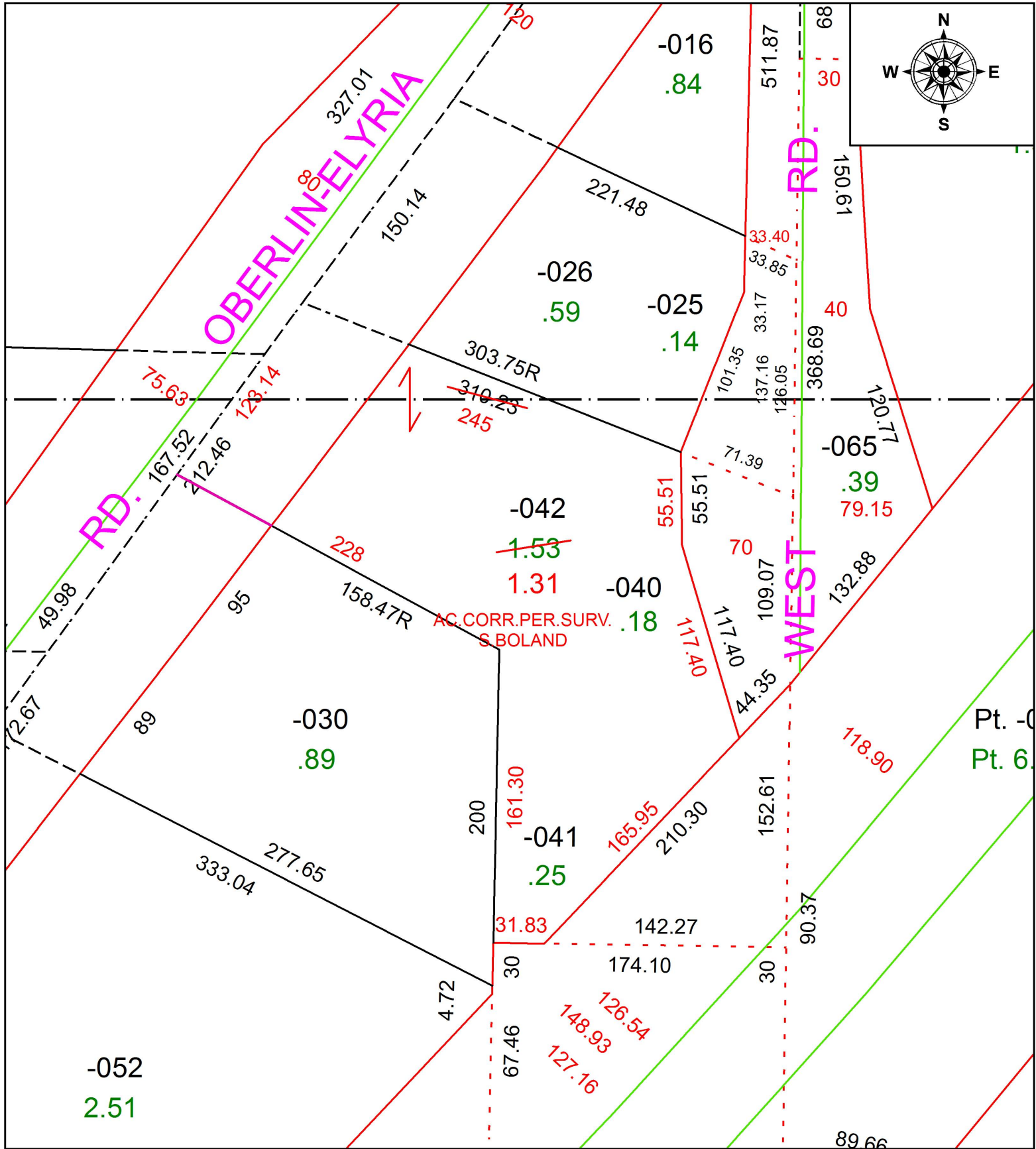


PARENT PARCEL: 09-00-099-000-042

CHILD PARCEL:

STARTING POINT: INTERSECTION OF C/L OF WEST RD, AND C/L OF OBERLIN- ELYRIA RD.

18-03970-C



SPLITS/DEEDS PROCESSED
 LORAIN COUNTY TAX MAP DEPARTMENT
 226 MIDDLE AVE. ELYRIA, OH

SURVEYED BY: SEAN A. BOLAND
 CLOSURE: 1: 39,371
 MAP PAGE(S): 9-00-099
 APPROVED BY: RRM DATE: 10-19-18
 SCALE: 1" = 75' PRIOR INSTRUMENT: 20110373885