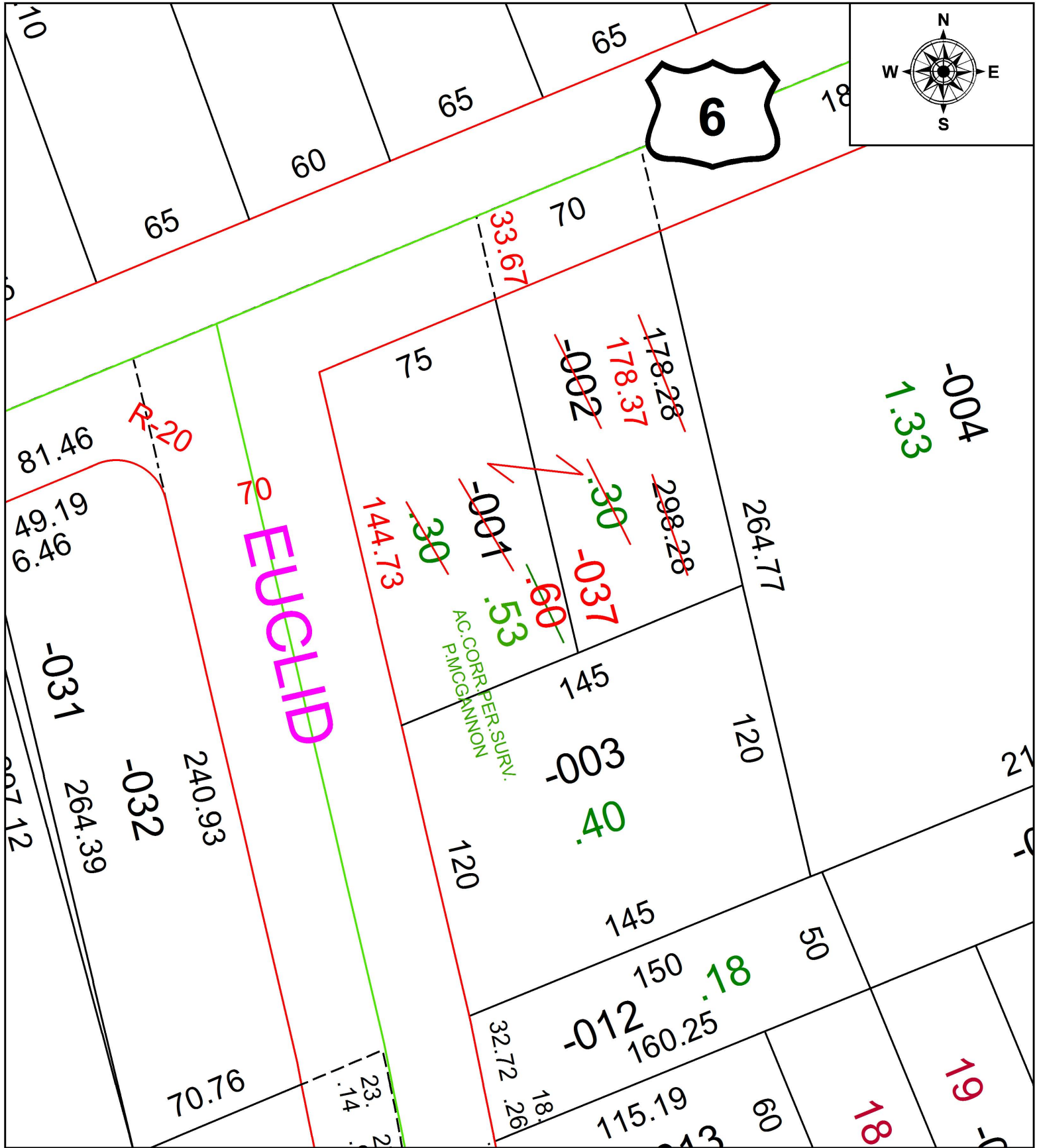


PARENT PARCEL: 03-00-047-103-001, -002

CHILD PARCEL: 03-00-047-103-037

STARTING POINT: INTERSECTION OF EAST LINE OF EUCLID AVE. AND SOUTH LINE OF EAST ERIE AVE.

19-03966



**SPLITS/DEEDS PROCESSED**  
 LORAIN COUNTY TAX MAP DEPARTMENT  
 226 MIDDLE AVE. ELYRIA, OH

SURVEYED BY: PATRICK A. MCGANNON

CLOSURE: 1: 127,239

MAP PAGE(S): 3-00-047

APPROVED BY: RRM DATE: 4-30-19

SCALE: 1" = 50' PRIOR INSTRUMENT: 20170623169