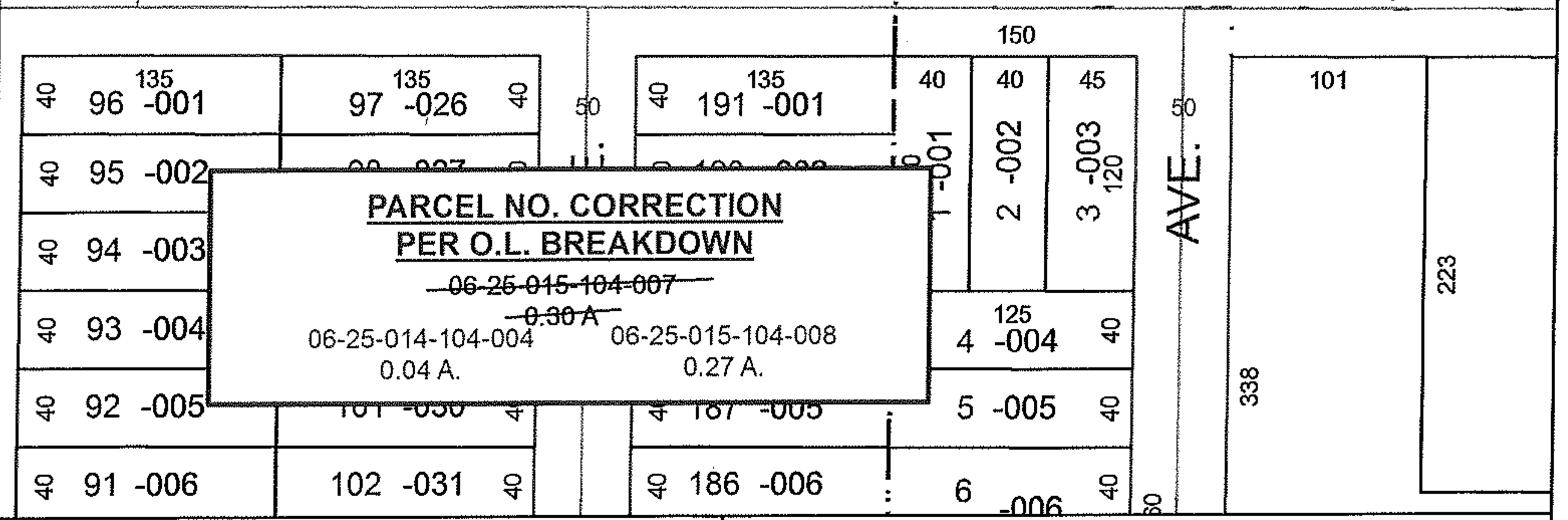
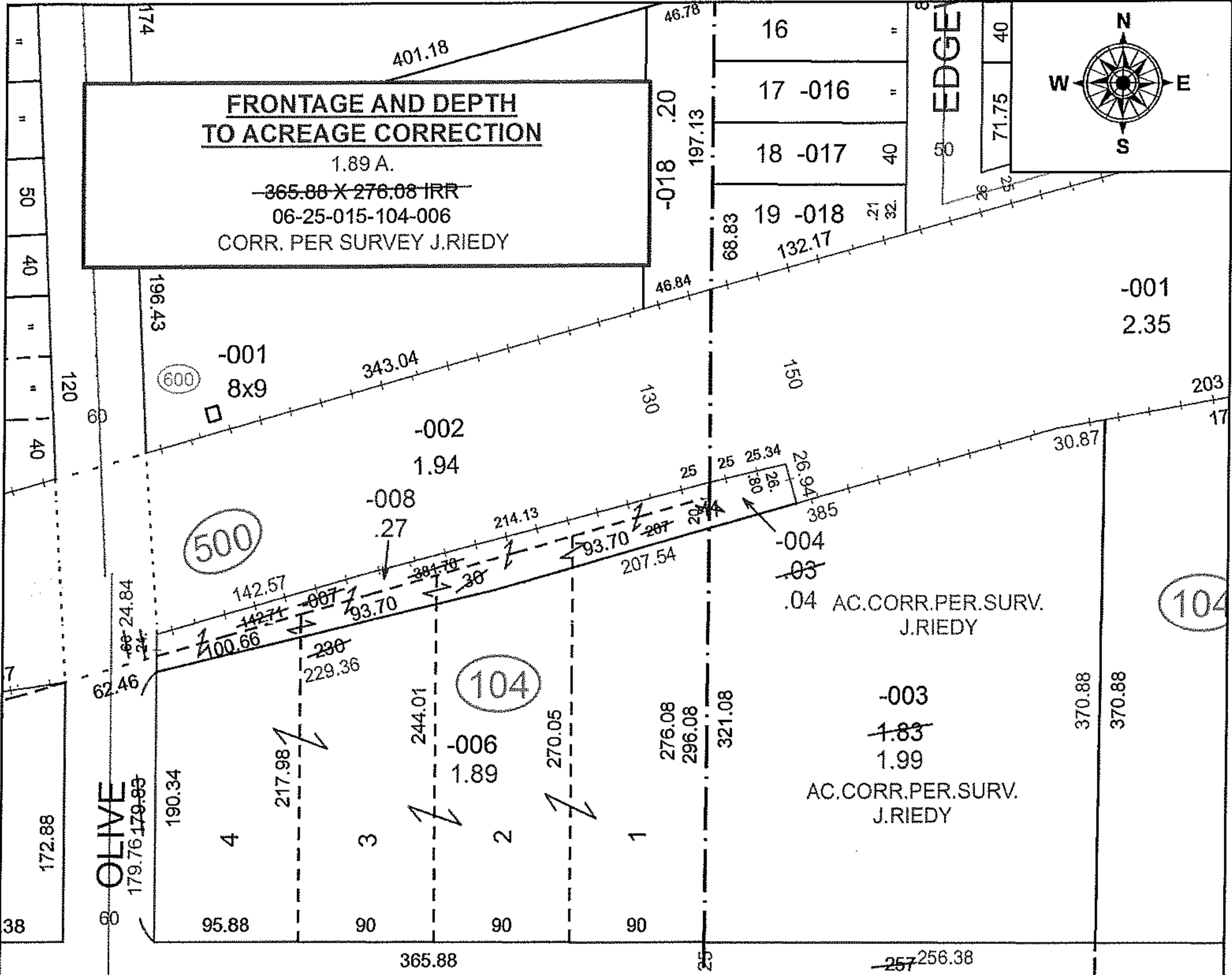


PARENT PARCEL: 06-25-014-104-003, 06-25-015-104-006, -007

CHILD PARCEL: 06-25-014-104-003, -004, 06-25-015-104-006, -008

STARTING POINT: INTERSECTION OF C/L OF OLIVE ST. AND C/L OF TAYLOR ST.

18-03965-C



SPLITS/DEEDS PROCESSED
 LORAIN COUNTY TAX MAP DEPARTMENT
 226 MIDDLE AVE. ELYRIA, OH

SURVEYED BY: JOSHUA S. RIEDY
 CLOSURE: 1: 116,259
 MAP PAGE(S): 6-105
 APPROVED BY: RRM DATE: 10-4-18
 SCALE: 1" = 100 PRIOR INSTRUMENT: 20170619498