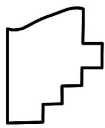
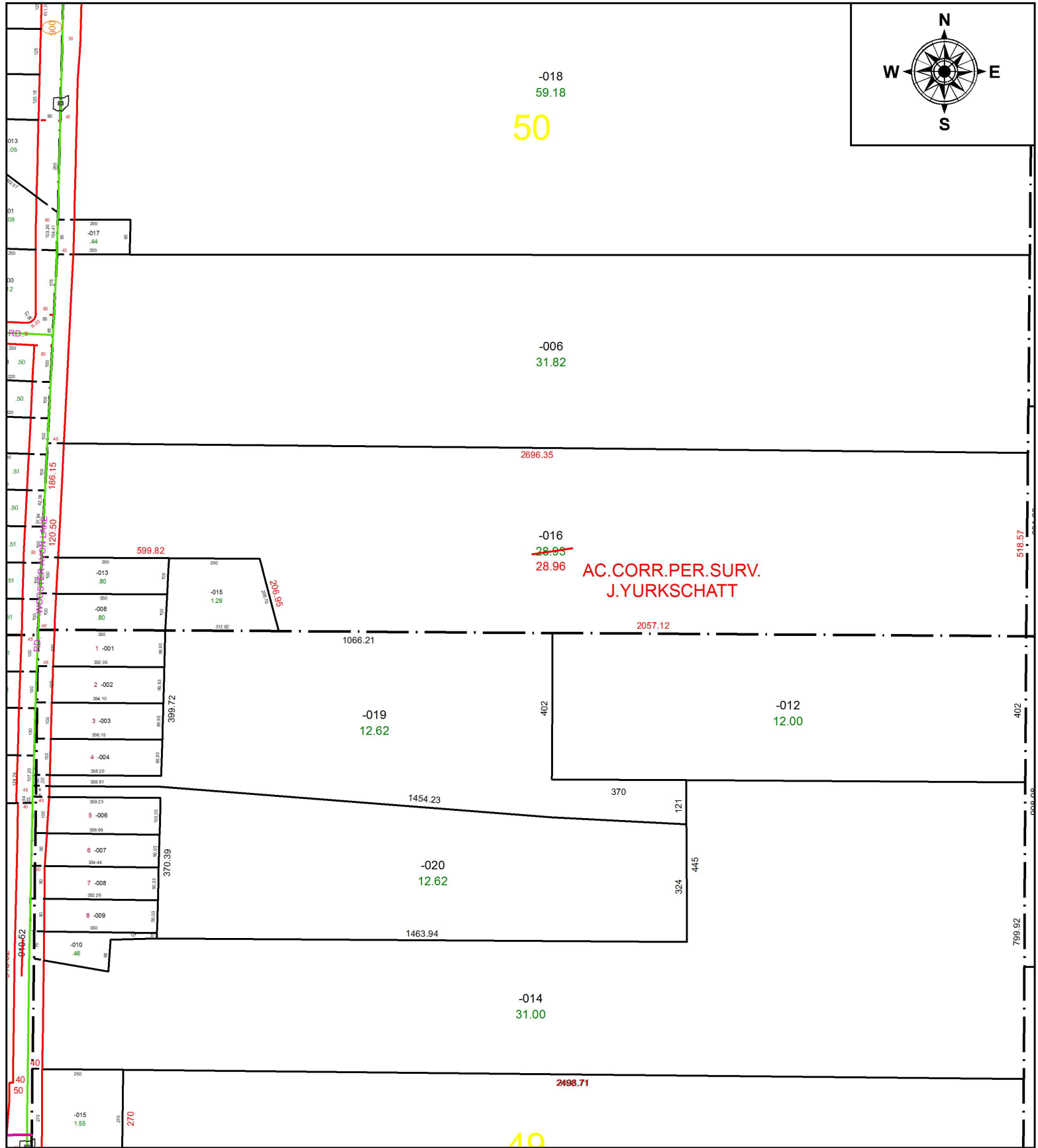
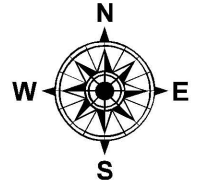


PARENT PARCEL: 11-00-050-000-016

CHILD PARCEL: XX-XX-XXX-XXX-XXX

STARTING POINT: SOUTHEAST CORNER OF O.L. 50

18-03963-C



SPLITS/DEEDS PROCESSED
LORAIN COUNTY TAX MAP DEPARTMENT
226 MIDDLE AVE. ELYRIA, OH

SURVEYED BY: JAMES P. YURKSCHATT
CLOSURE: 1: 3,206,452
MAP PAGE(S): 11-00-050
APPROVED BY: RRM **DATE:** 10-3-18
SCALE: 1" = 350 **PRIOR INSTRUMENT:** 20130465393