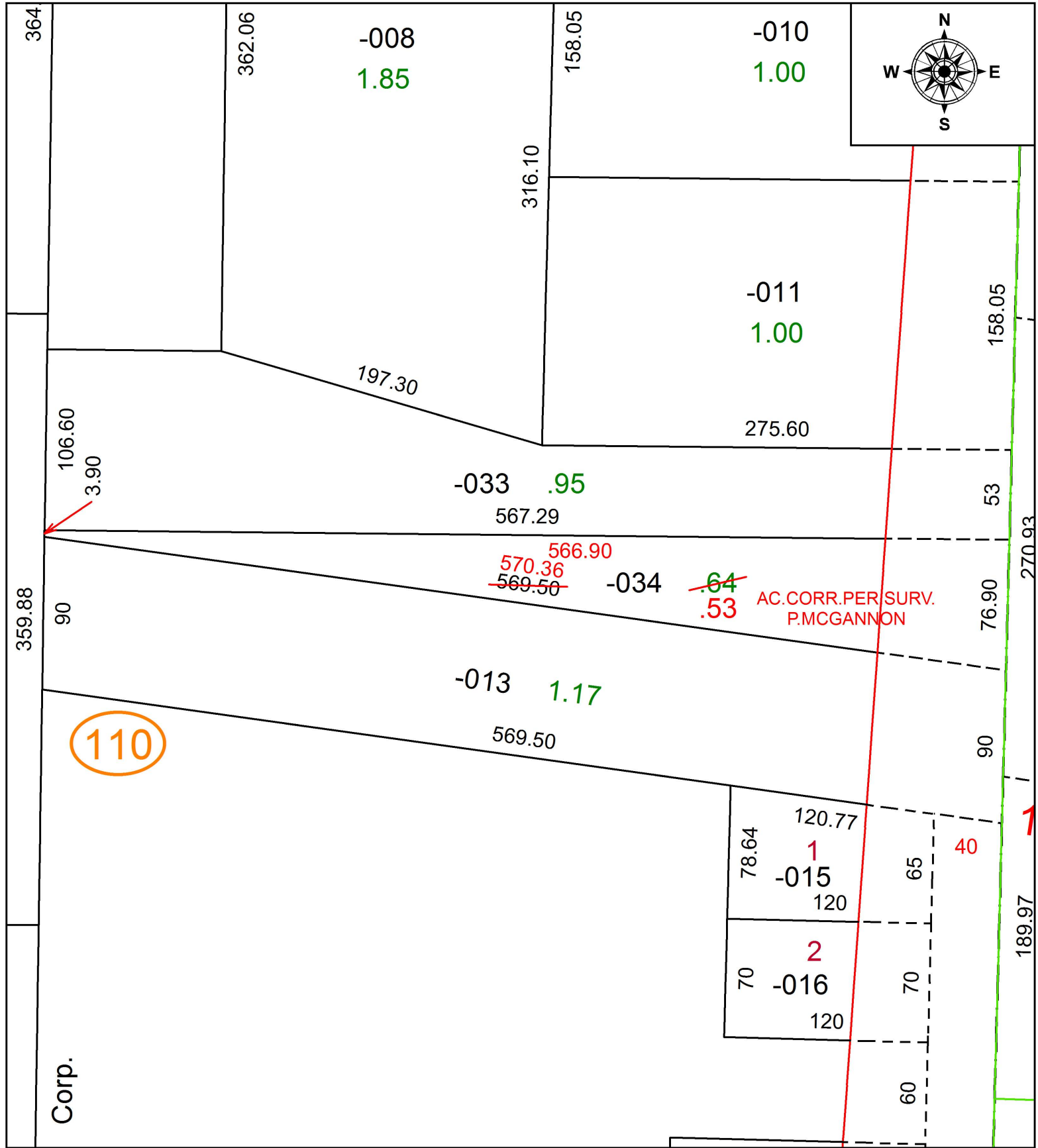


PARENT PARCEL: 05-00-037-110-034

CHILD PARCEL: XX-XX-XXX-XXX-XXX

STARTING POINT: INTERSECTION OF C/L OF PARK AVE, AND C/L OF LEAVITT RD.

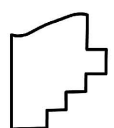
18-03962-D



AC. CORR. PER SURV. P. MCGANNON

110

Corp.



SPLITS/DEEDS PROCESSED
LORAIN COUNTY TAX MAP DEPARTMENT
226 MIDDLE AVE. ELYRIA, OH

SURVEYED BY: PATRICK A. MCGANNON
 CLOSURE: 1: 508,835
 MAP PAGE(S): 5-00-037
 APPROVED BY: RRM DATE: 10-3-18
 SCALE: 1" = 75 PRIOR INSTRUMENT: 20180683285