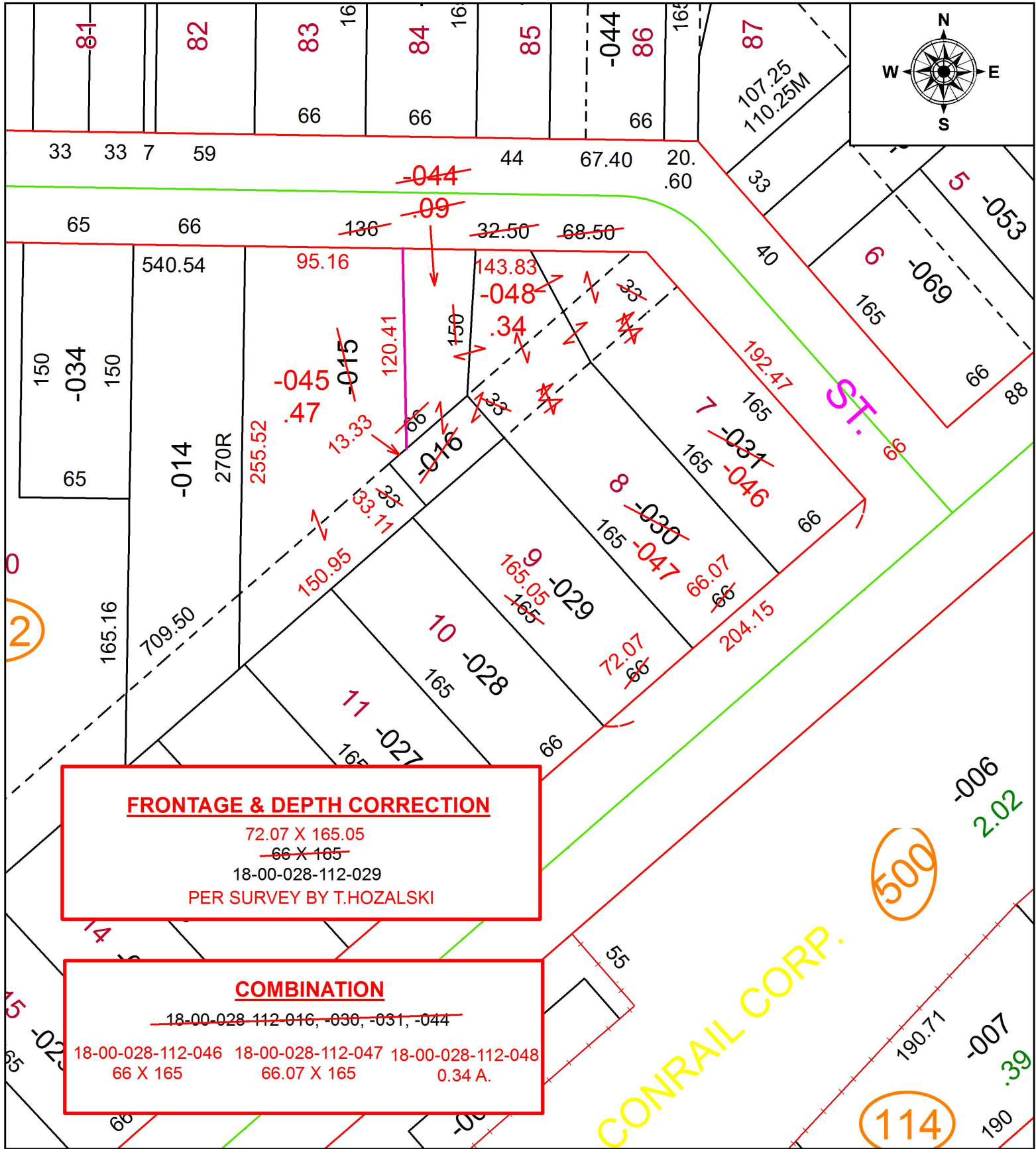


PARENT PARCEL: 18-00-028-112-015, -016, -029, -030, -031

CHILD PARCEL: 18-00-028-112-029, -044 THRU -048

STARTING POINT: INTERSECTION OF SOUTHWEST LINE OF JOHNS ST. AND NORTH LINE OF KELLY ST.

19-03958



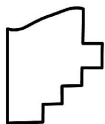
**FRONTAGE & DEPTH CORRECTION**

72.07 X 165.05  
~~66 X 165~~  
18-00-028-112-029  
PER SURVEY BY T.HOZALSKI

**COMBINATION**

~~18-00-028-112-016, -030, -031, -044~~  
18-00-028-112-046 18-00-028-112-047 18-00-028-112-048  
66 X 165 66.07 X 165 0.34 A.

CONRAIL CORP.



**SPLITS/DEEDS PROCESSED**  
LORAIN COUNTY TAX MAP DEPARTMENT  
226 MIDDLE AVE. ELYRIA, OH

SURVEYED BY: TIMOHTY D. HOZALSKI  
CLOSURE: 1:37,341  
MAP PAGE(S): 18-00-028  
APPROVED BY: RRM DATE: 4-17-19  
SCALE: 1" = 75 PRIOR INSTRUMENT: 20060177194