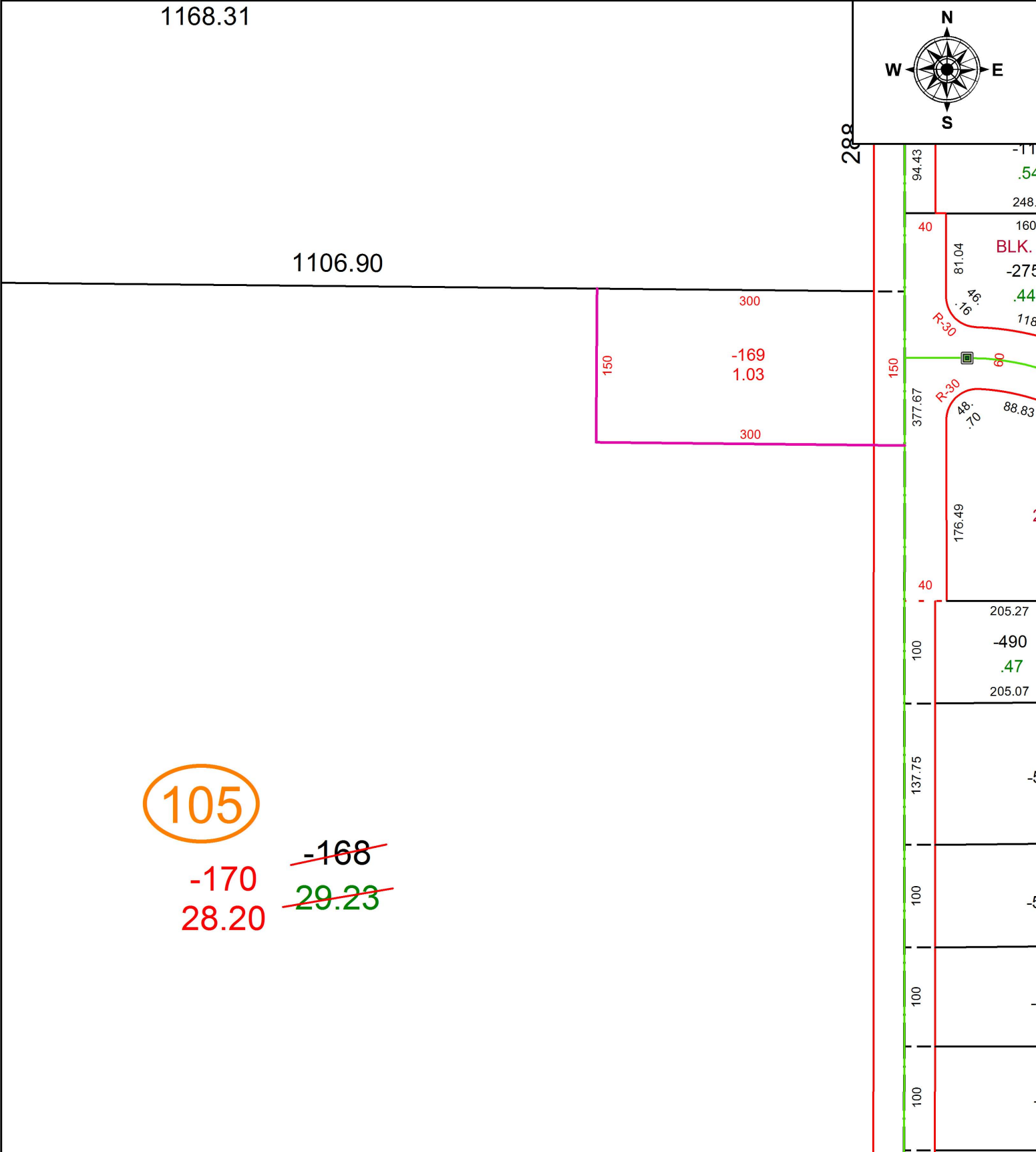


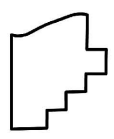
PARENT PARCEL: 04-00-024-105-168
 CHILD PARCEL: 04-00-024-105-169, -170
 STARTING POINT: INTERSECTION OF C/L OF MAPLERIDGE BLVD AND WEST LINE OF MAPLERIDGE SUB.

19-03957



105

~~-168~~
~~29.23~~
 -170
 28.20



SPLITS/DEEDS PROCESSED
 LORAIN COUNTY TAX MAP DEPARTMENT
 226 MIDDLE AVE. ELYRIA, OH

SURVEYED BY: TIMOTHY D. HOZALSKI
 CLOSURE: 1: 2147483648
 MAP PAGE(S): 4-00-024
 APPROVED BY: RRM DATE: 4-16-19
 SCALE: 1" = 125 PRIOR INSTRUMENT: 20000685729