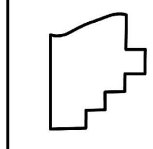
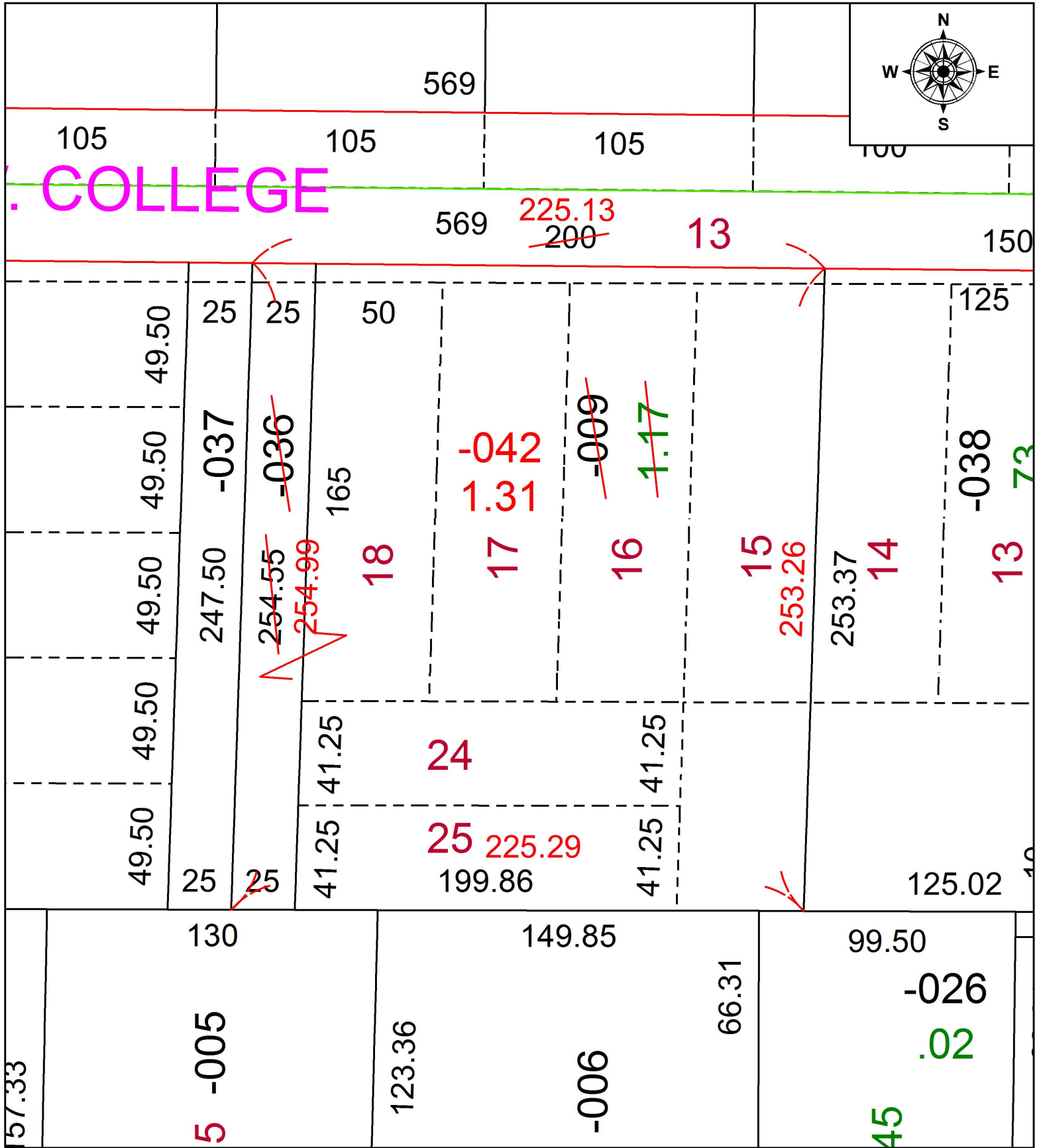


PARENT PARCEL: 09-00-084-107-009, -036

CHILD PARCEL: 09-00-084-107-042

STARTING POINT: INTERSECTION OF C/L OF W. COLLEGE ST. AND C/L OF N. PROSPECT ST.

18-03954-D



**SPLITS/DEEDS PROCESSED**  
 LORAIN COUNTY TAX MAP DEPARTMENT  
 226 MIDDLE AVE. ELYRIA, OH

SURVEYED BY: SCOTT J. CASEY  
 CLOSURE: 1: 101,885  
 MAP PAGE(S): 9-00-084  
 APPROVED BY: RRM DATE: 9-10-18  
 SCALE: 1" = 50' PRIOR INSTRUMENT: 20170637759