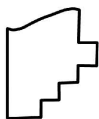
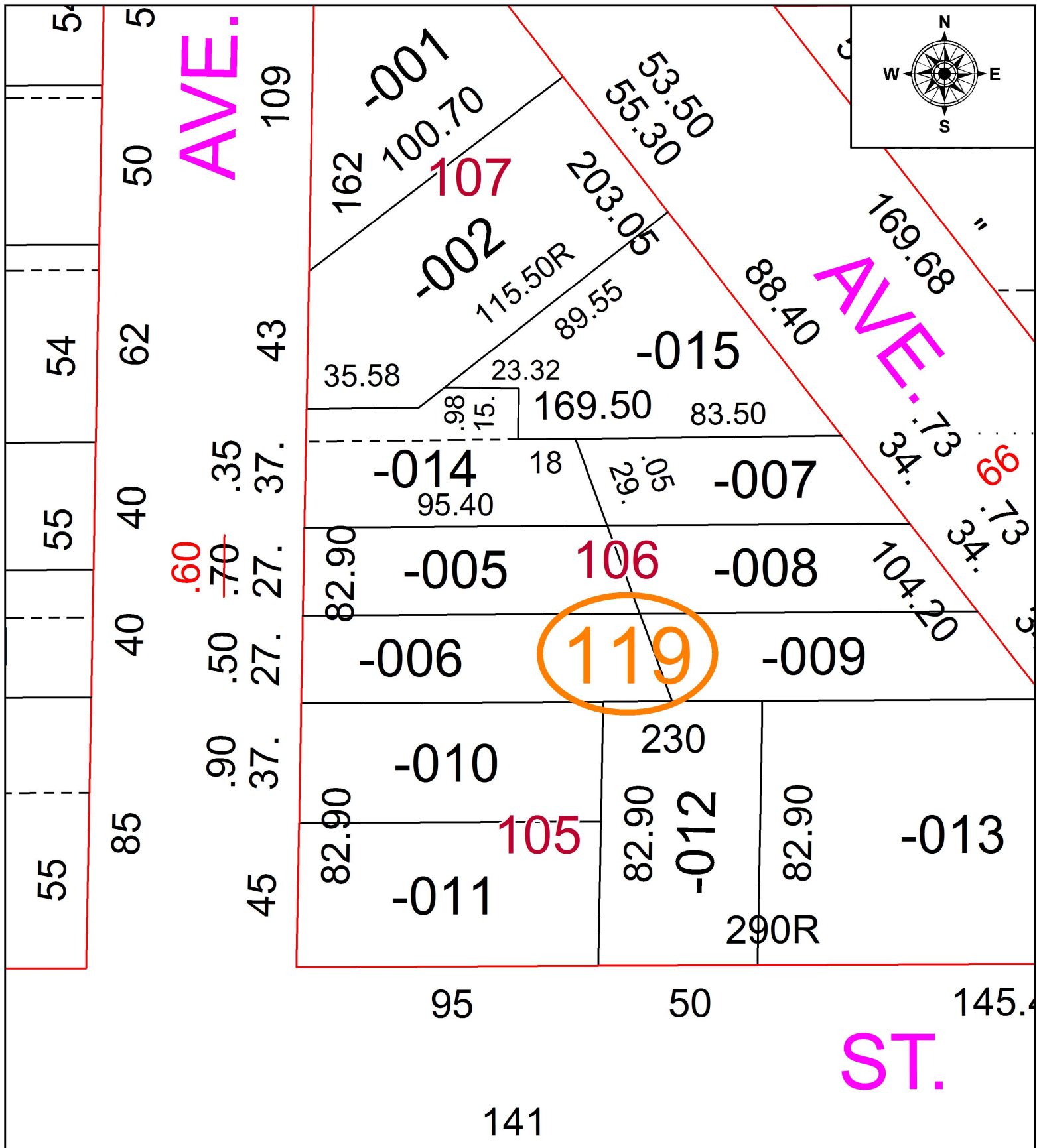


PARENT PARCEL: 06-24-026-119-005

CHILD PARCEL: FRONTAGE CORRECTION

STARTING POINT: 27.70' NORTH OF S.W. CORNER OF S/L 106

18-03953-C



SPLITS/DEEDS PROCESSED
LORAIN COUNTY TAX MAP DEPARTMENT
226 MIDDLE AVE. ELYRIA, OH

SURVEYED BY:	NA
CLOSURE:	NA
MAP PAGE(S):	06-24-026
APPROVED BY:	TJS
DATE:	9/6/18
SCALE:	1" = 40'
PRIOR INSTRUMENT:	2002-0836881