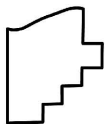
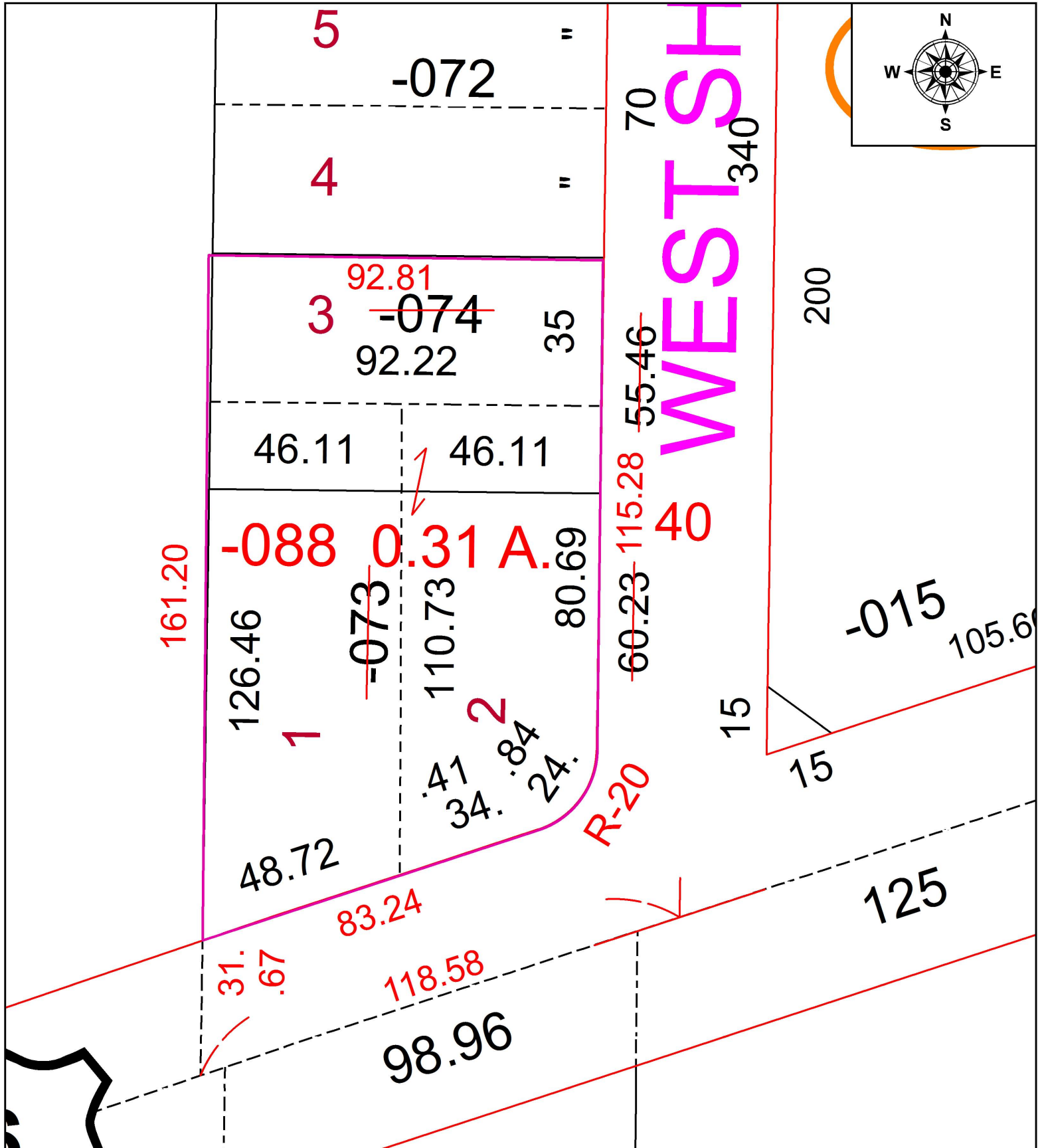


PARENT PARCEL: 04-00-006-101-073 & -074 COMB. PRIOR INST. # 2007-0223906 & 2016-0571381

CHILD PARCEL: 04-00-006-101-088

STARTING POINT: CL OF LAKE RD. & CL OF WEST SHORE RD.

19-03952



**SPLITS/DEEDS PROCESSED**  
 LORAIN COUNTY TAX MAP DEPARTMENT  
 226 MIDDLE AVE. ELYRIA, OH

SURVEYED BY: STEVEN METCALF  
 CLOSURE: 1:158755  
 MAP PAGE(S): 04-00-006  
 APPROVED BY: TJS DATE: 3/25/19  
 SCALE: 1" = 30' PRIOR INSTRUMENT: