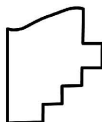
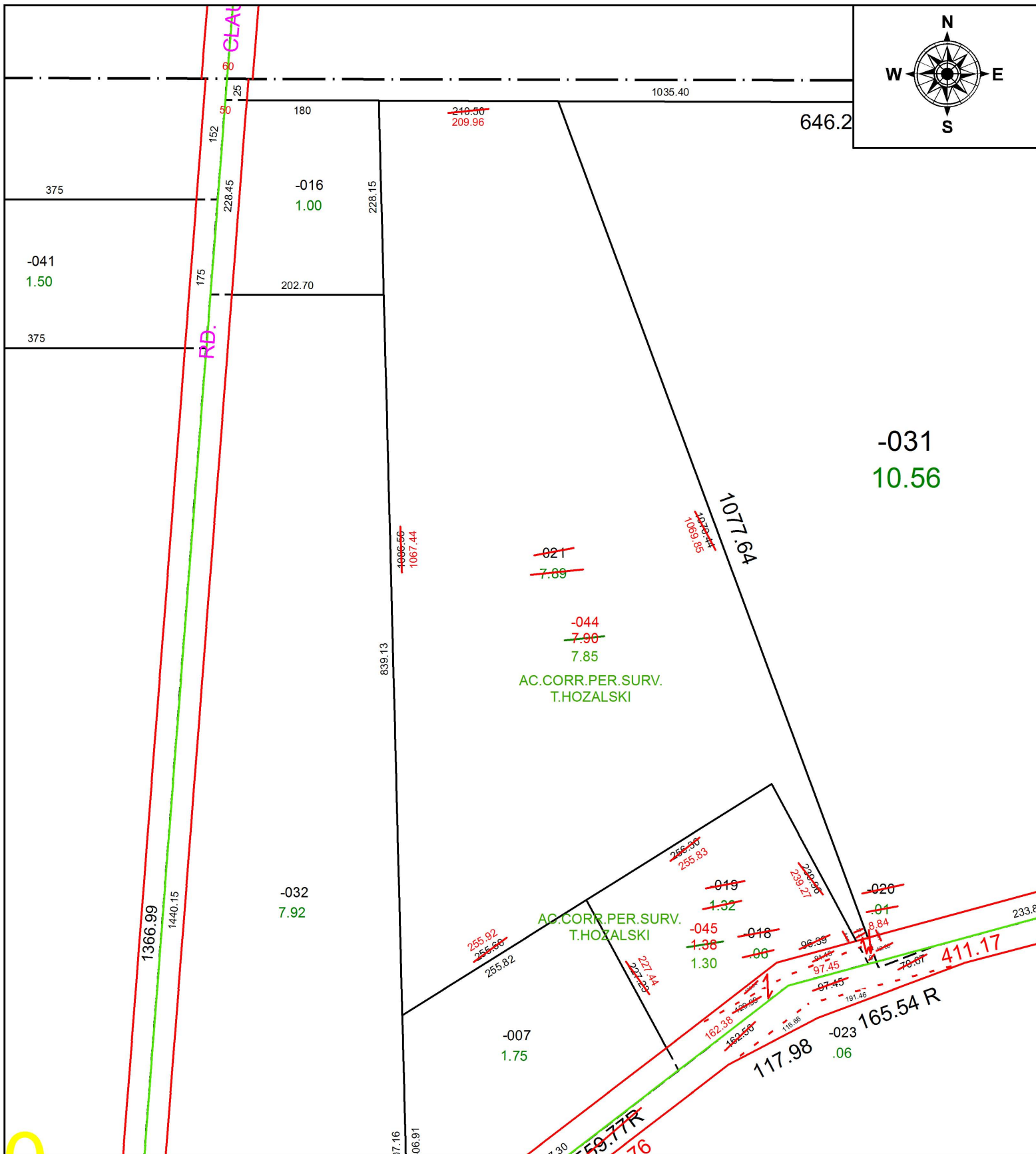
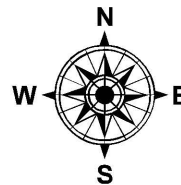


PARENT PARCEL: 01-00-060-000-018 THRU -021

CHILD PARCEL: 01-00-060-000-044, -045

STARTING POINT: INTERSECTION OF C/L OF MIDDLE RIDGE RD. AND EAST LINE OF O.L. 60

18-03951-A



SPLITS/DEEDS PROCESSED
LORAIN COUNTY TAX MAP DEPARTMENT
226 MIDDLE AVE. ELYRIA, OH

SURVEYED BY: TIMOTHY D. HOZALSKI
CLOSURE: 1: 827,220
MAP PAGE(S): 1-K
APPROVED BY: RRM DATE: 9-7-18
SCALE: 1" = 150 PRIOR INSTRUMENT: 20140526081