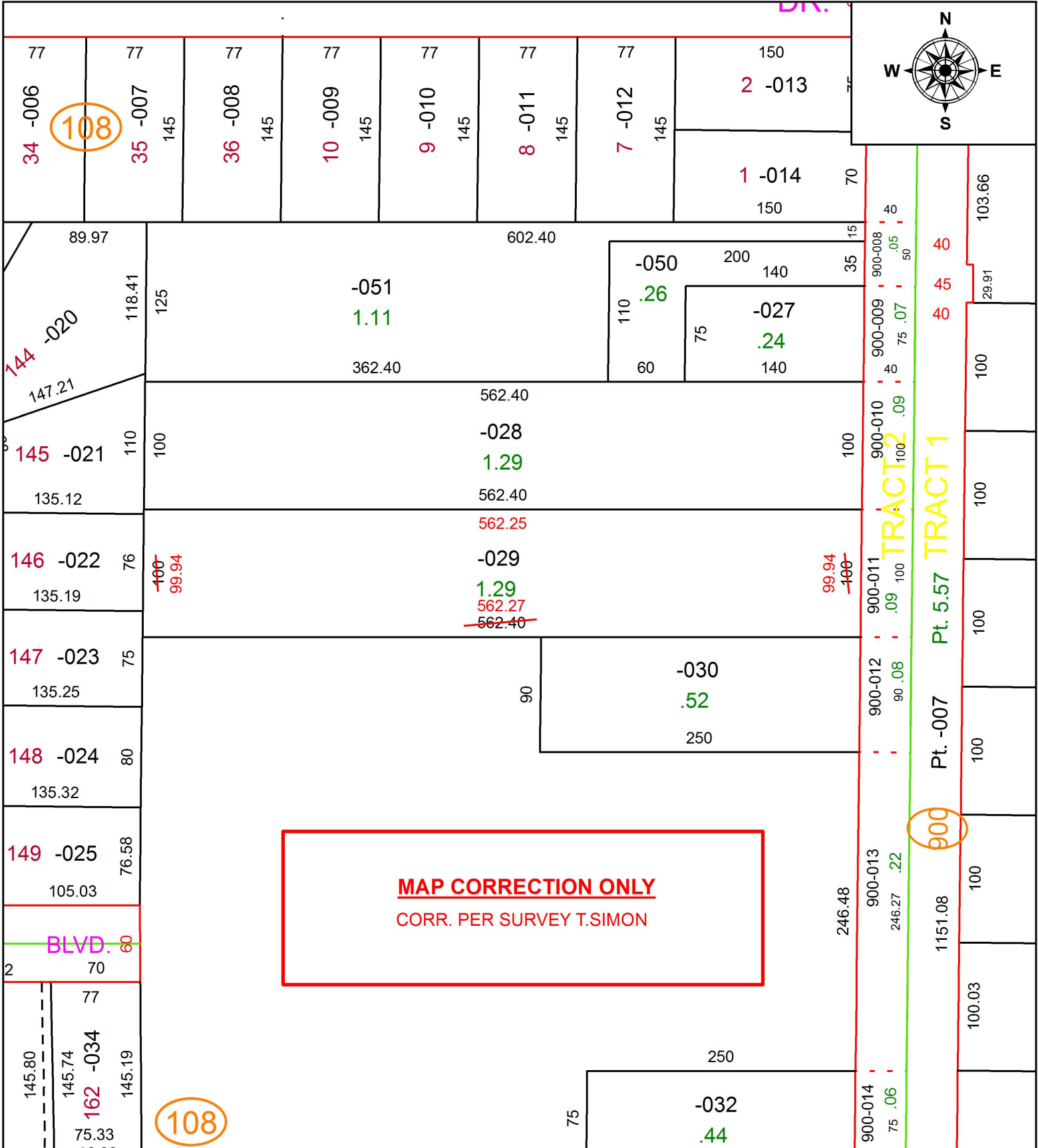


PARENT PARCEL: 02-02-005-108-029

CHILD PARCEL: XX-XX-XXX-XXX-XXX

STARTING POINT: INTERSECTION OF C/L OF WESTWOOD DR. AND C/L OF OBERLIN AVE.

18-03950-D



**SPLITS/DEEDS PROCESSED**  
 LORAIN COUNTY TAX MAP DEPARTMENT  
 226 MIDDLE AVE. ELYRIA, OH

SURVEYED BY: THOMAS A. SIMON  
 CLOSURE: 1: 374,835  
 MAP PAGE(S): 2-02-005  
 APPROVED BY: RRM DATE: 9-4-18  
 SCALE: 1" = 100 PRIOR INSTRUMENT: 20090314329