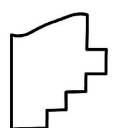
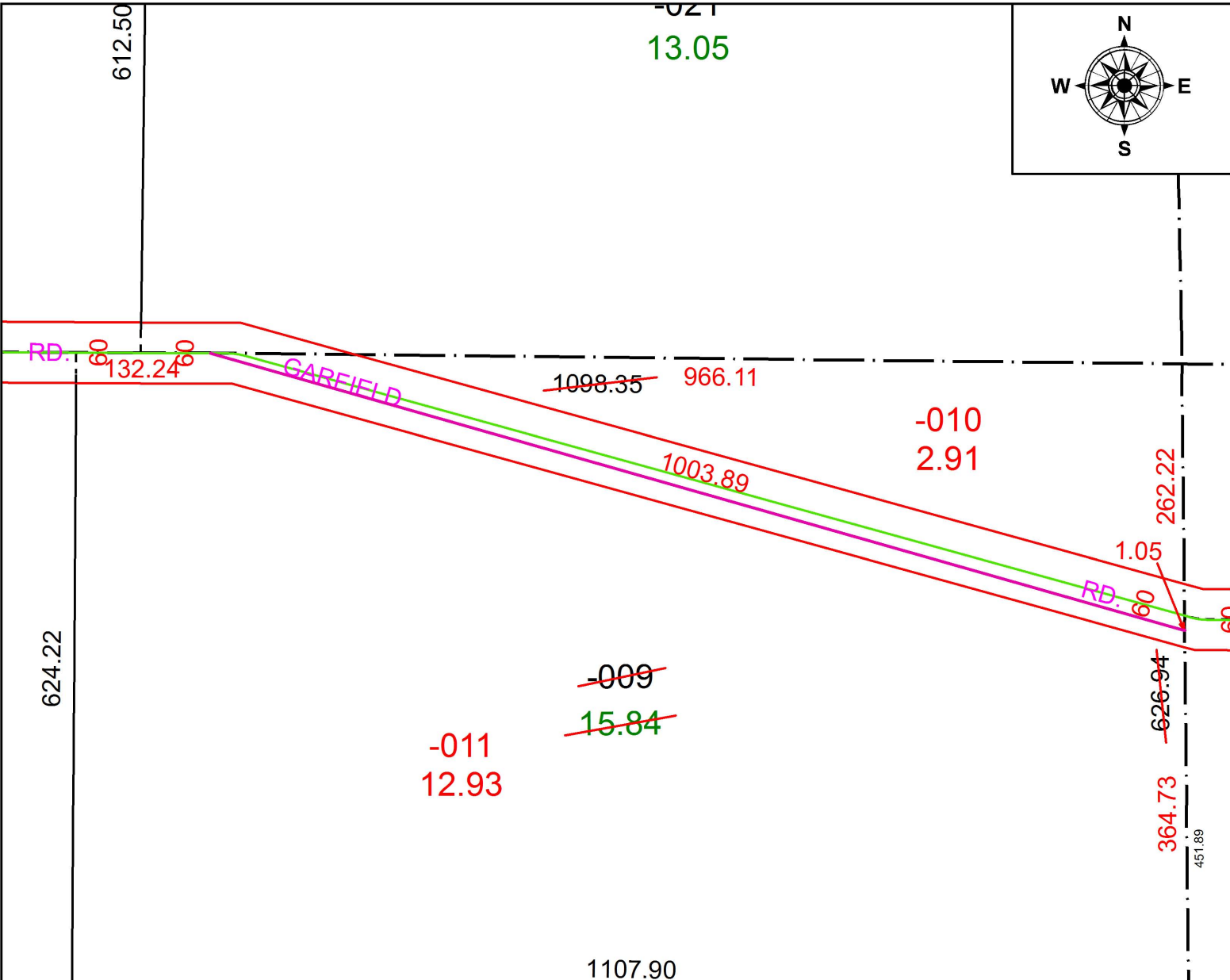


PARENT PARCEL: 08-14-009-000-009
 CHILD PARCEL: 08-14-009-000-010, -011
 STARTING POINT: INTERSECTION OF C/L OF GORE ORPHANAGE RD. AND C/L OF GARFIELD RD.

19-03948



SPLITS/DEEDS PROCESSED
 LORAIN COUNTY TAX MAP DEPARTMENT
 226 MIDDLE AVE. ELYRIA, OH

SURVEYED BY: THOMAS A. SIMON
 CLOSURE: 1:255,870
 MAP PAGE(S): 8-14-009
 APPROVED BY: RRM DATE: 4-25-19
 SCALE: 1" = 150 PRIOR INSTRUMENT: 20180692424