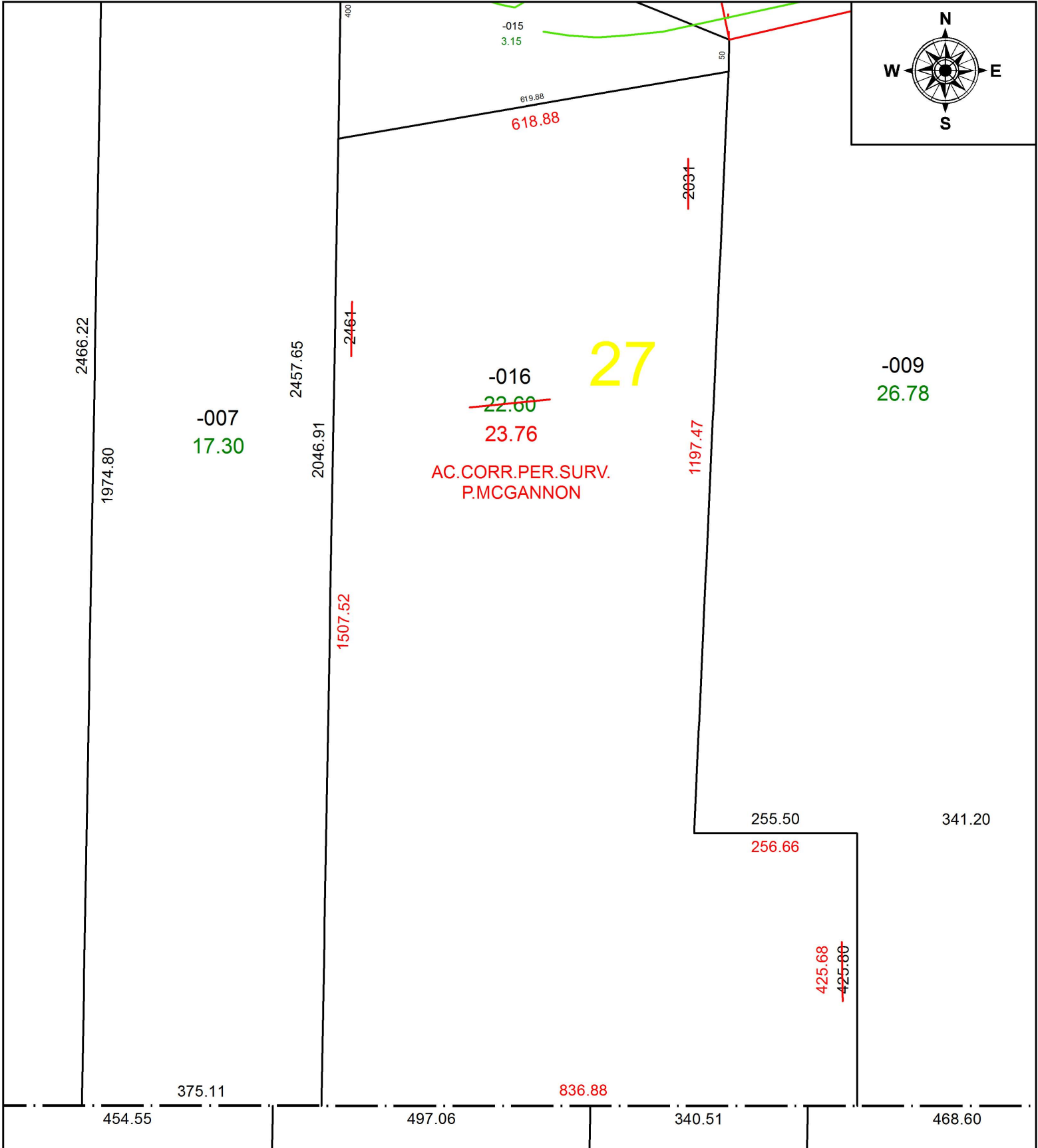


PARENT PARCEL: 05-00-027-000-016

CHILD PARCEL: XX-XX-XXX-XXX-XXX

STARTING POINT: SOUTHWEST CORNER OF O.L.27

18-03948-D



**SPLITS/DEEDS PROCESSED**  
 LORAIN COUNTY TAX MAP DEPARTMENT  
 226 MIDDLE AVE. ELYRIA, OH

SURVEYED BY: PATRICK A. MCGANNON  
 CLOSURE: 1: 653,730  
 MAP PAGE(S): 5-00-027  
 APPROVED BY: RRM DATE: 8-24-18  
 SCALE: 1" = 200 PRIOR INSTRUMENT: 20170616237