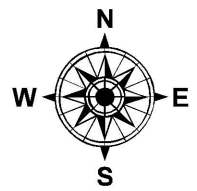
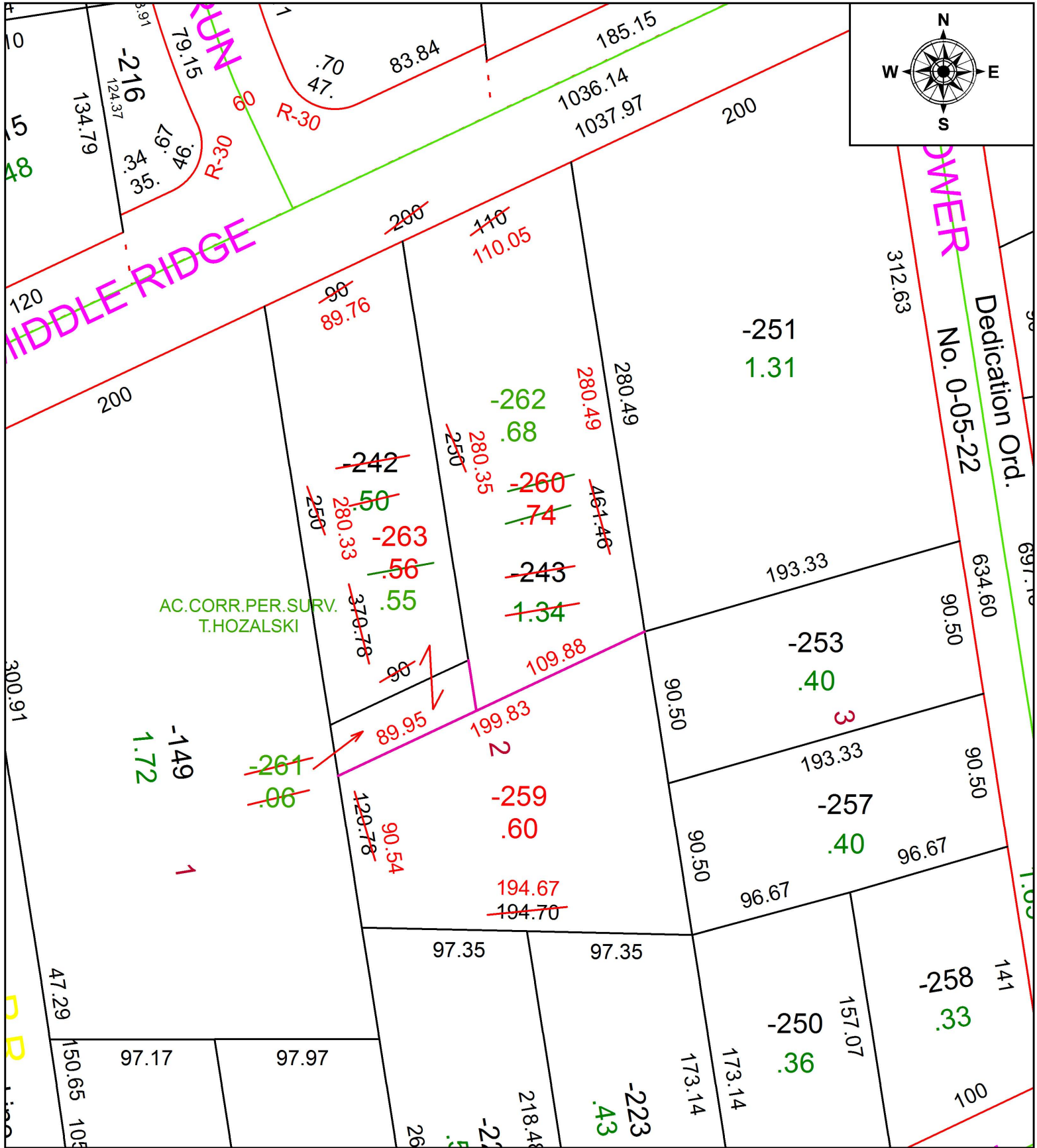


PARENT PARCEL: 05-00-006-000-242, -243, -257

CHILD PARCEL: 05-00-006-000-257, -259 THRU -263

STARTING POINT: INTERSECTION OF SOUTH LINE OF MIDDLE RIDGE RD. AND WEST LINE OF TOWER LN.

19-03947



AC.CORR.PER.SURV.
T.HOZALSKI

Dedication Ord.
No. 0-05-22

SPLITS/DEEDS PROCESSED

LORAIN COUNTY TAX MAP DEPARTMENT
226 MIDDLE AVE. ELYRIA, OH

SURVEYED BY: TIMOHTY D. HOZALSKI
 CLOSURE: 1:307,693
 MAP PAGE(S): 5-00-006
 APPROVED BY: RRM DATE: 3-11-19
 SCALE: 1" = 75' PRIOR INSTRUMENT: 20180699042

