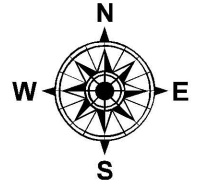


PARENT PARCEL: 05-00-013-102-004

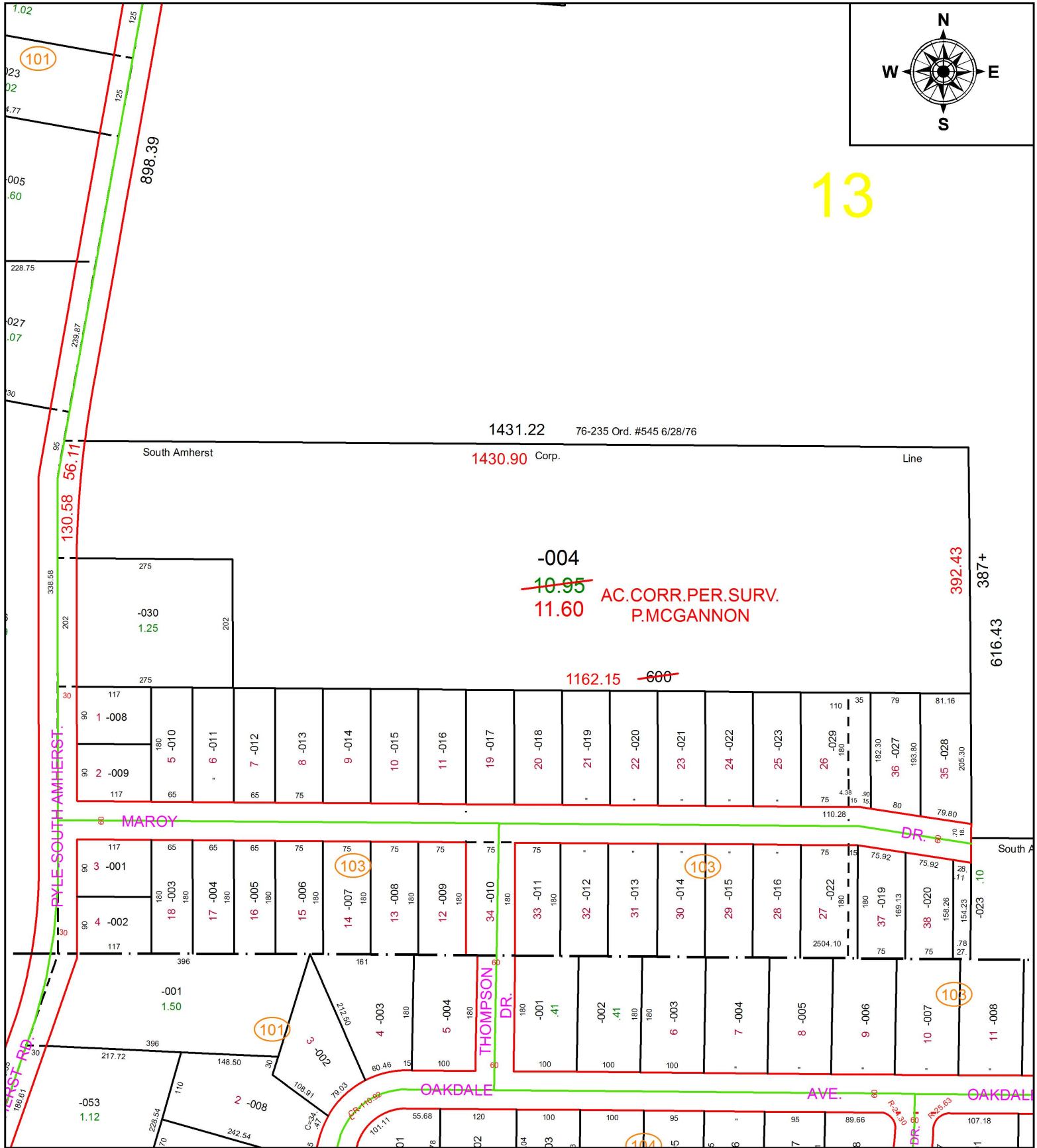
CHILD PARCEL: XX-XX-XXX-XXX-XXX

STARTING POINT: INTERSECTION OF C/L OF PYLE-SOUTH AMHERST RD. AND NORTH LINE OF O.L. 13

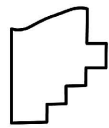
18-03947-D



13



-004  
~~10.95~~ AC. CORR. PER. SURV.  
11.60 P. MCGANNON



**SPLITS/DEEDS PROCESSED**  
LORAIN COUNTY TAX MAP DEPARTMENT  
226 MIDDLE AVE. ELYRIA, OH

SURVEYED BY: PATRICK A. MCGANNON  
CLOSURE: 1: 148,967  
MAP PAGE(S): 5-00-013  
APPROVED BY: RRM DATE: 8-27-18  
SCALE: 1" = 200 PRIOR INSTRUMENT: 20150559900