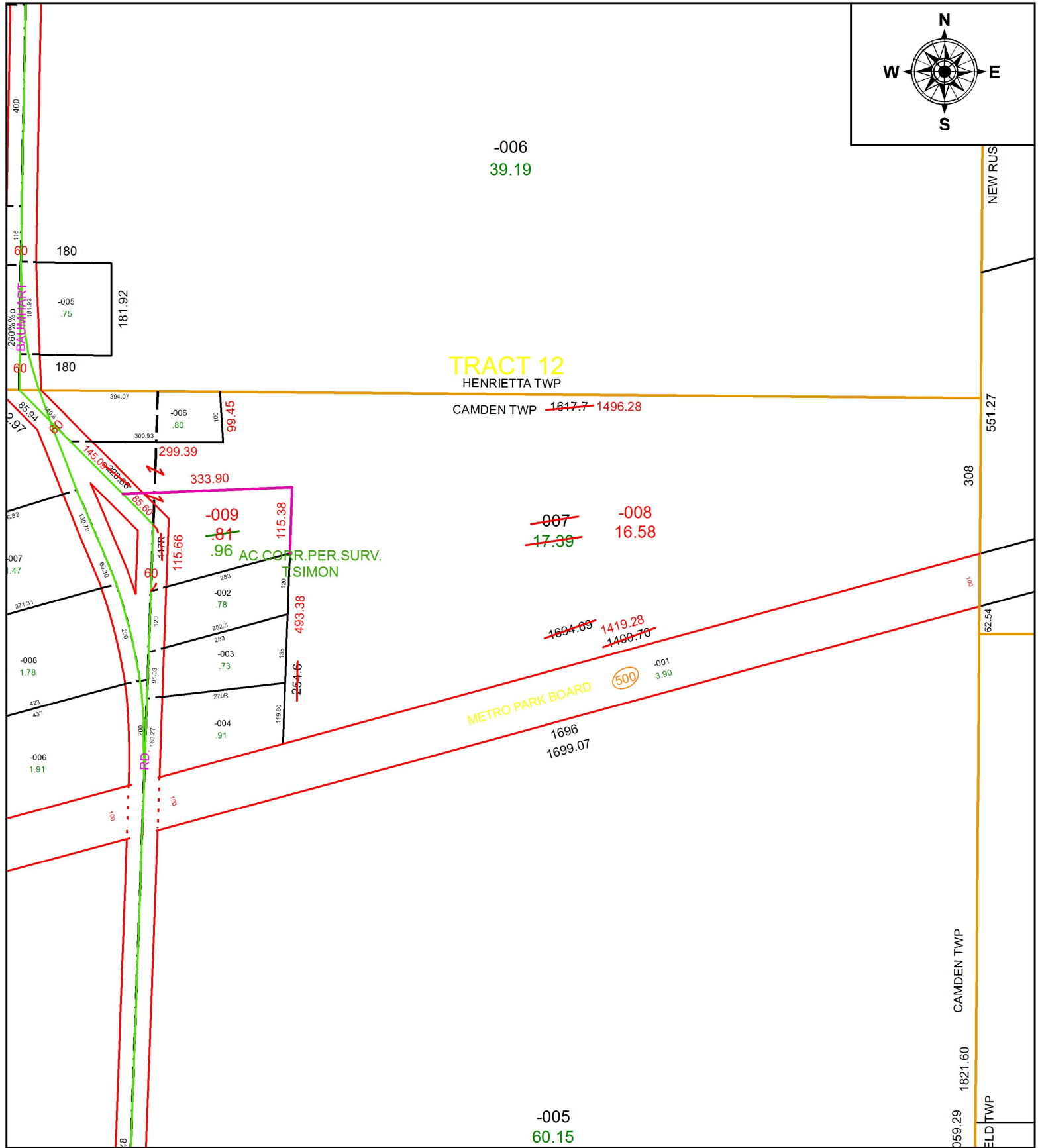


PARENT PARCEL: 13-11-010-000-007

CHILD PARCEL: 13-11-010-000-008, -009

STARTING POINT: SOUTHWEST CORNER OF O.L.20 TR. 12 HENRIETTA TWP.

19-03945



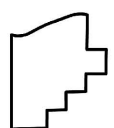
TRACT 12
HENRIETTA TWP

CAMDEN TWP ~~1617.7~~ 1496.28

METRO PARK BOARD

(500)

AC CORR. PER. SURV.
T. SIMON



SPLITS/DEEDS PROCESSED
LORAIN COUNTY TAX MAP DEPARTMENT
226 MIDDLE AVE. ELYRIA, OH

SURVEYED BY: THOMAS A. SIMON
CLOSURE: 1: 417,110
MAP PAGE(S): 13-11-010
APPROVED BY: RRM DATE: 3-5-19
SCALE: 1" = 250 PRIOR INSTRUMENT: 20110377881