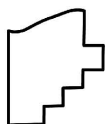
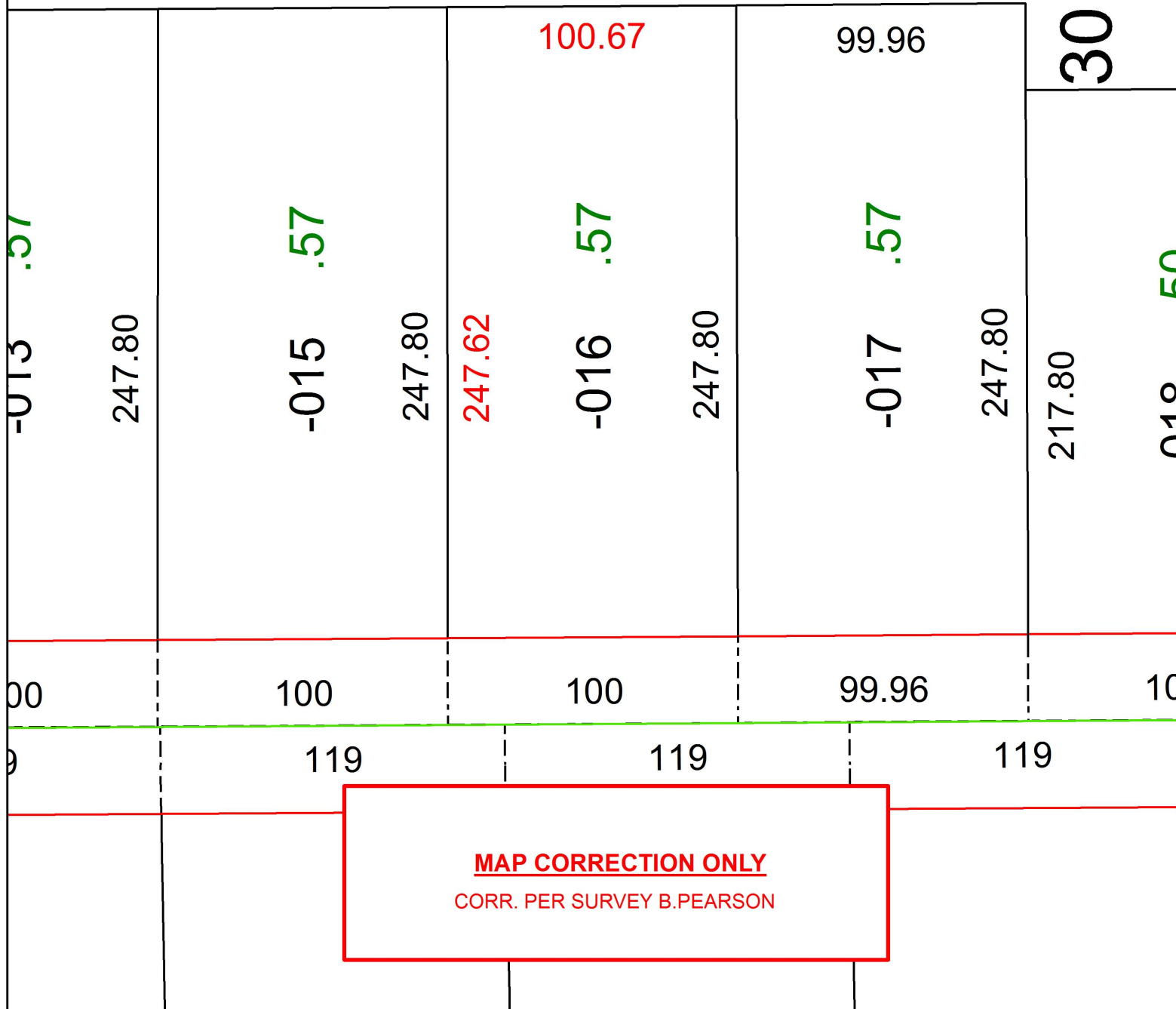
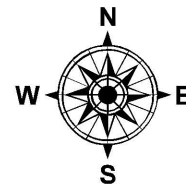


PARENT PARCEL: 07-00-044-103-016

CHILD PARCEL: XX-XX-XXX-XXX-XXX

STARTING POINT: INTERSECTION OF C/L OF CASE RD. AND C/L OF OTTEN RD.

18-03945-D



**SPLITS/DEEDS PROCESSED**  
LORAIN COUNTY TAX MAP DEPARTMENT  
226 MIDDLE AVE. ELYRIA, OH

SURVEYED BY: BETHA. PEARSON  
 CLOSURE: 1: 318,521  
 MAP PAGE(S): 7-00-044  
 APPROVED BY: RRM DATE: 8-21-18  
 SCALE: 1" = 50' PRIOR INSTRUMENT: 20150553942