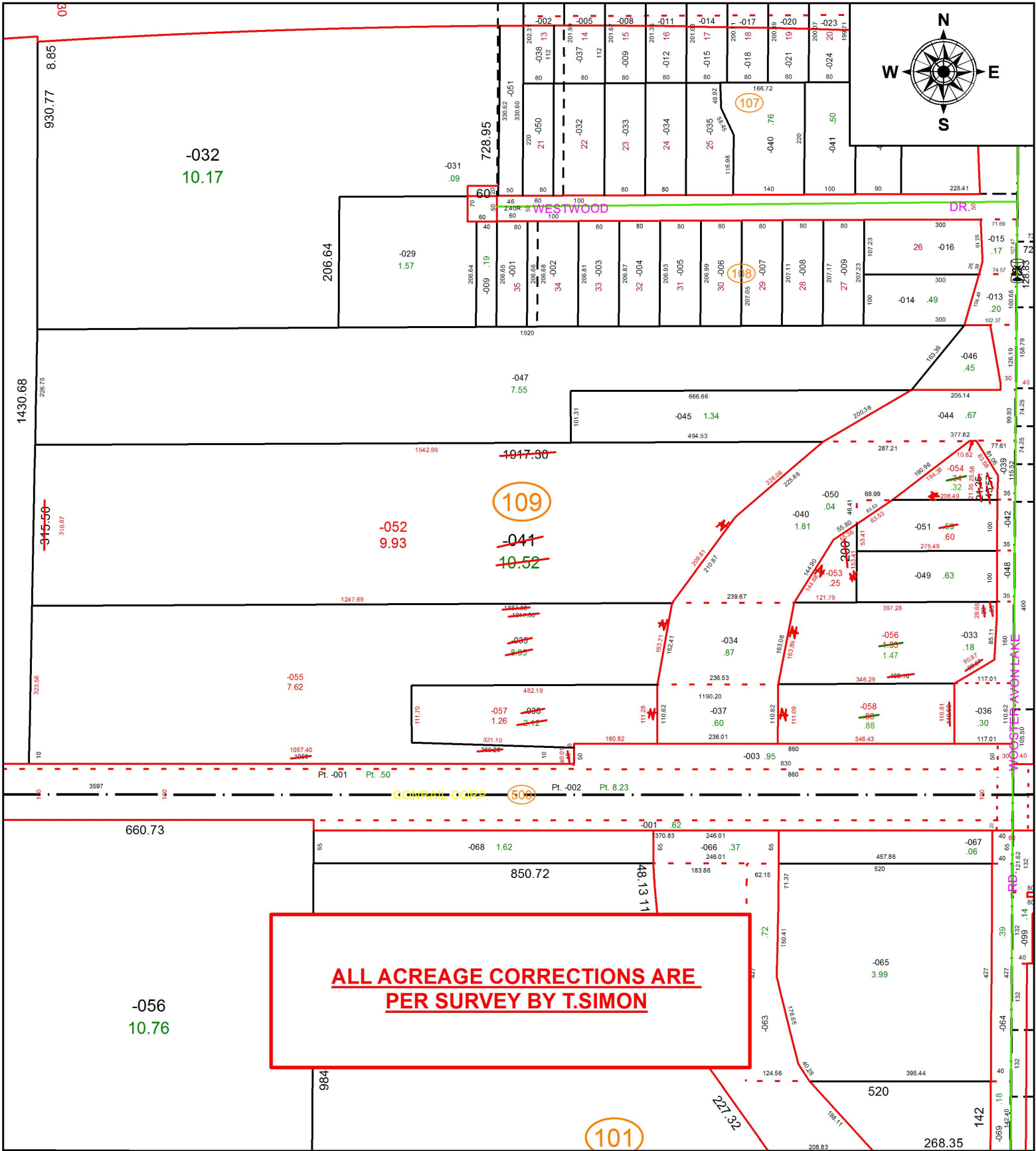


PARENT PARCEL: 07-00-027-109-035, -038, -041, -051

CHILD PARCEL: 07-00-027-109-051, -052 THRU -058

STARTING POINT: SOUTHEAST CORNER OF O.L.27

19-03944



**ALL ACREAGE CORRECTIONS ARE
PER SURVEY BY T.SIMON**



SPLITS/DEEDS PROCESSED
LORAIN COUNTY TAX MAP DEPARTMENT
226 MIDDLE AVE. ELYRIA, OH

SURVEYED BY: THOMAS A. SIMON
CLOSURE: 1:191,727
MAP PAGE(S): 7-00-027
APPROVED BY: RRM DATE: 3-4-19
SCALE: 1" = 250 PRIOR INSTRUMENT: 19970481621