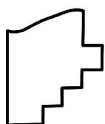
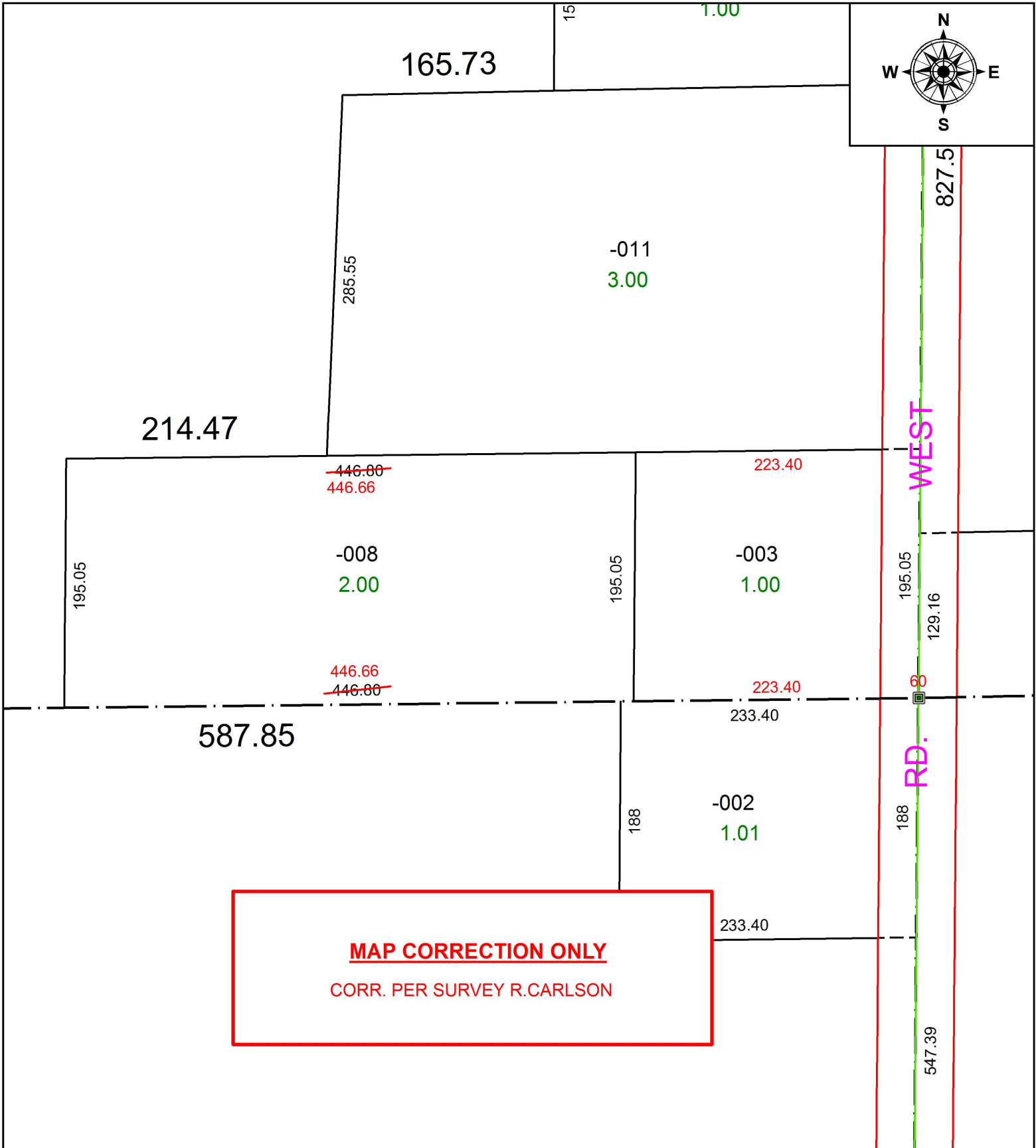


PARENT PARCEL: 14-00-122-000-003, -008

CHILD PARCEL: XX-XX-XXX-XXX-XXX

STARTING POINT: SOUTHEAST CORNER OF O.L.122

18-03943-D



SPLITS/DEEDS PROCESSED
LORAIN COUNTY TAX MAP DEPARTMENT
226 MIDDLE AVE. ELYRIA, OH

SURVEYED BY: RICHARD D. CARLSON

CLOSURE: 1: 2147483648

MAP PAGE(S): 14-H

APPROVED BY: RRM DATE: 8-20-18

SCALE: 1" = 100 PRIOR INSTRUMENT: OR 184/682