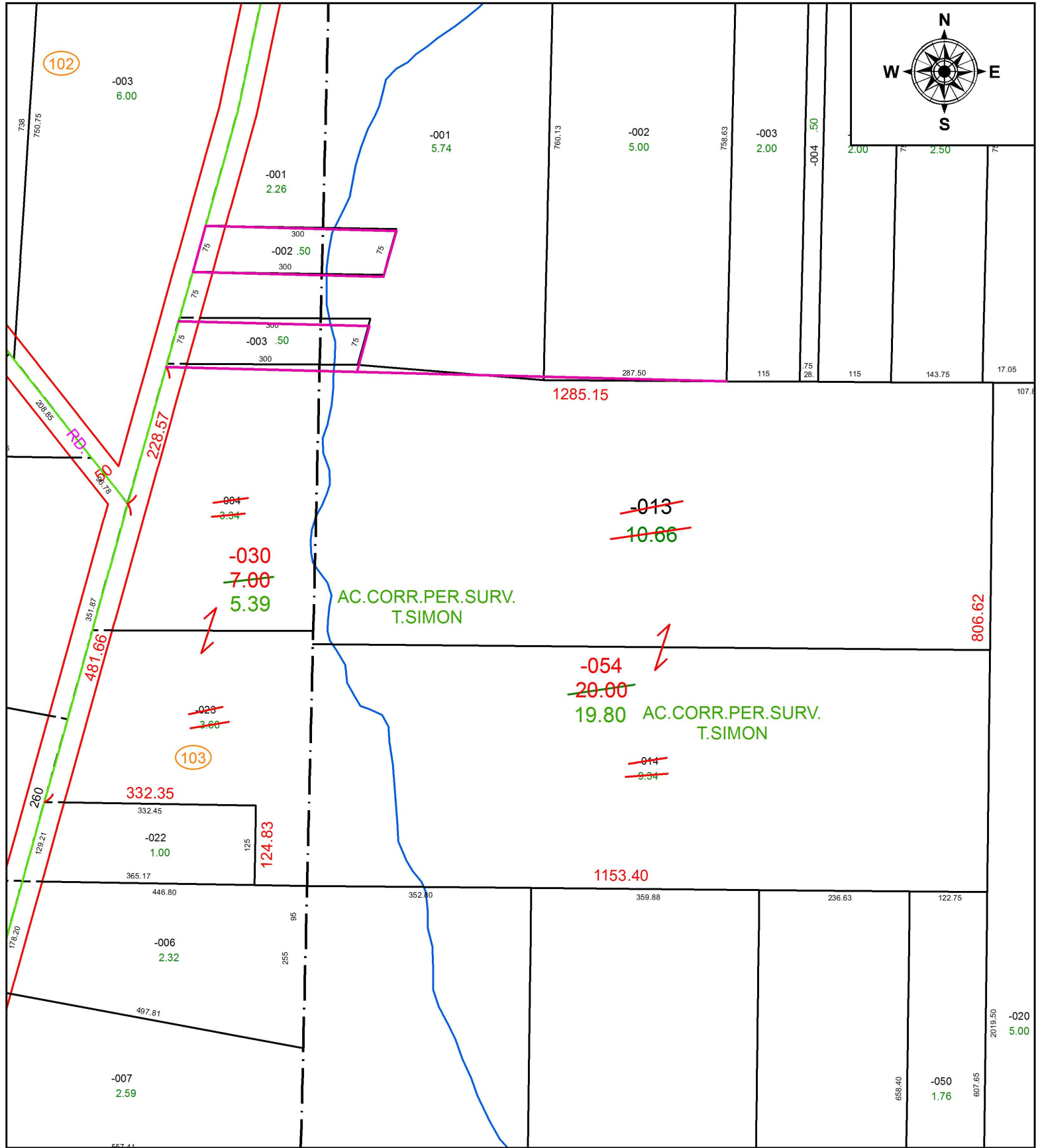


PARENT PARCEL: 12-00-065-000-013, -014, 12-00-076-103-004, -023

CHILD PARCEL: 12-00-065-000-054, 12-00-076-103-030

STARTING POINT: INTERSECTION OF C/L OF STATION RD. AND C/L OF ROOT RD.

18-03942-C



**SPLITS/DEEDS PROCESSED**  
 LORAIN COUNTY TAX MAP DEPARTMENT  
 226 MIDDLE AVE. ELYRIA, OH

SURVEYED BY: THOMAS A. SIMON  
 CLOSURE: 1: 548,693  
 MAP PAGE(S): 12-00-076  
 APPROVED BY: RRM DATE: 8-16-18  
 SCALE: 1" = 200 PRIOR INSTRUMENT: 20160574691