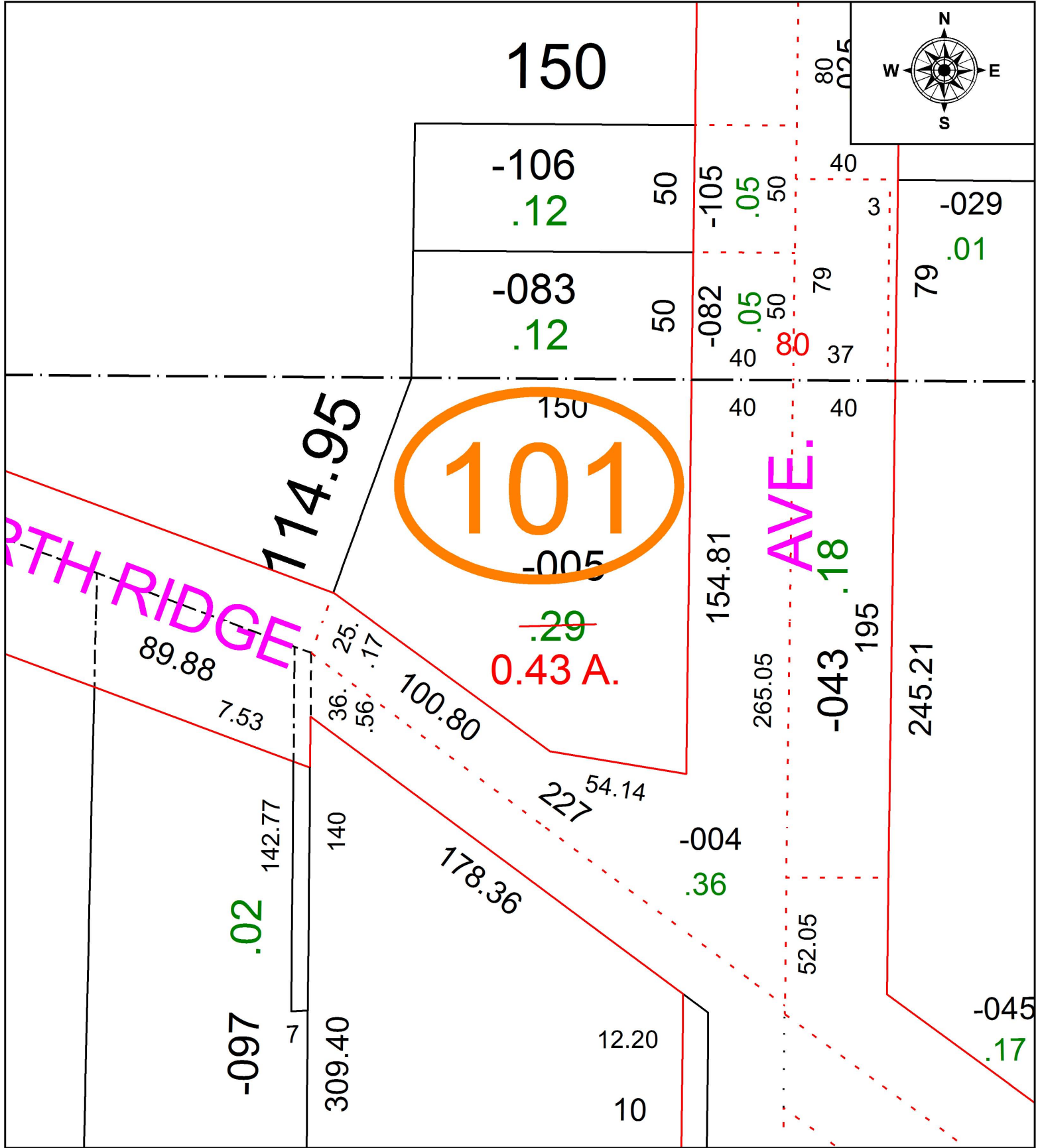


PARENT PARCEL: 03-00-113-101-005

CHILD PARCEL: ACREAGE CORRECTION PER INST. # 2017-0616509

STARTING POINT: CL OF BROADWAY AVE. & NORTH LINE OF O.L. 113

18-03941-C



**SPLITS/DEEDS PROCESSED**  
 LORAIN COUNTY TAX MAP DEPARTMENT  
 226 MIDDLE AVE. ELYRIA, OH

SURVEYED BY: B.B. NICHOLS  
 CLOSURE: 1: 3,000  
 MAP PAGE(S): 03-00-113  
 APPROVED BY: TJS DATE: 8/13/18  
 SCALE: 1" = 50' PRIOR INSTRUMENT: 2005-0071604