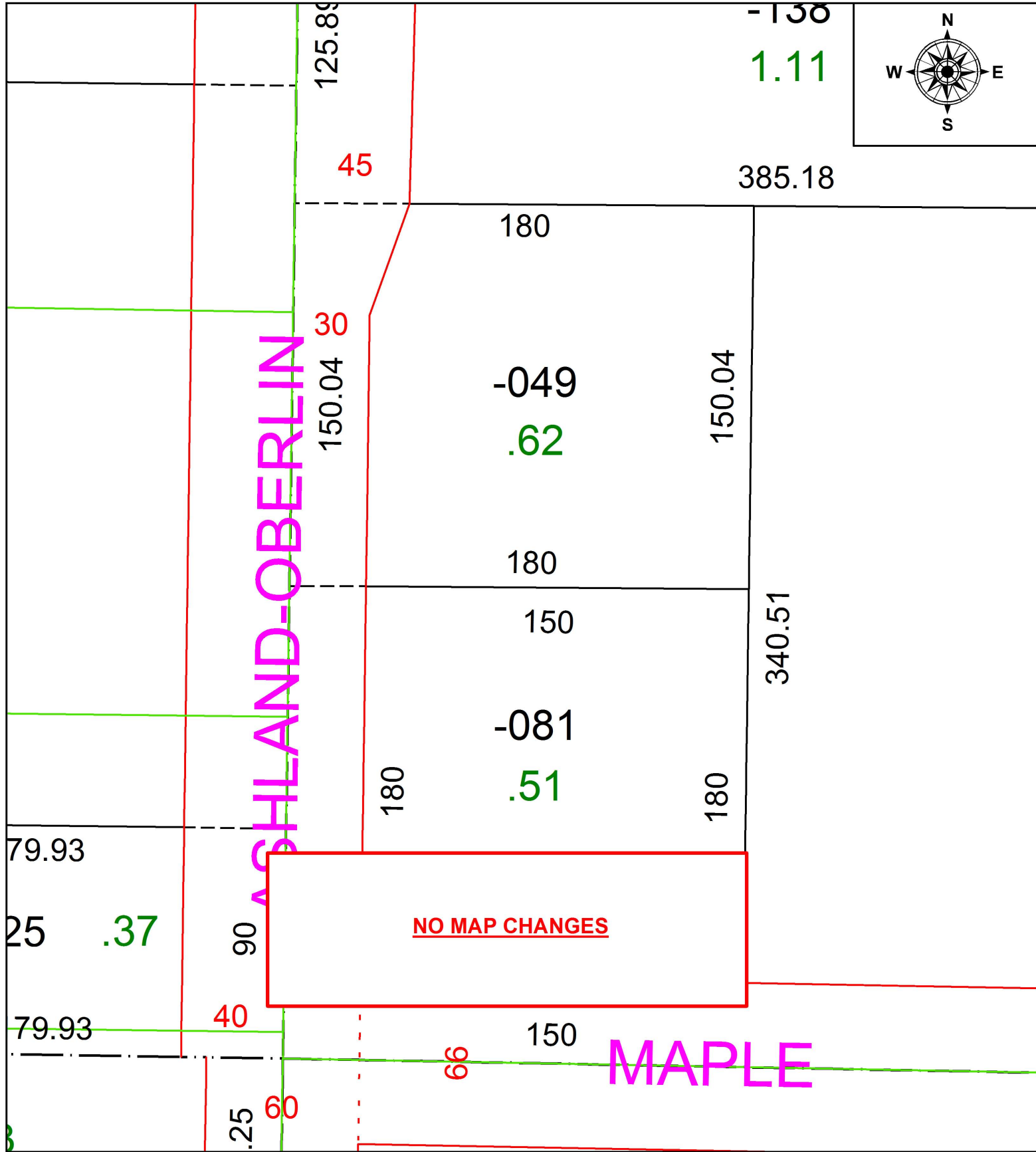
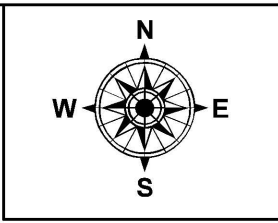


PARENT PARCEL: 18-00-020-000-049

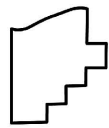
CHILD PARCEL: XX-XX-XXX-XXX-XXX

STARTING POINT: INTERSECTION OF C/L OF S.R.58 AND C/L OF MAPLE ST.

18-03939-D



**NO MAP CHANGES**



**SPLITS/DEEDS PROCESSED**  
LORAIN COUNTY TAX MAP DEPARTMENT  
226 MIDDLE AVE. ELYRIA, OH

SURVEYED BY: ALEXANDER B. ETCHILL  
CLOSURE: 1: 2147483648  
MAP PAGE(S): 18-00-020  
APPROVED BY: RRM DATE: 8-8-18  
SCALE: 1" = 50 PRIOR INSTRUMENT: 20180676985