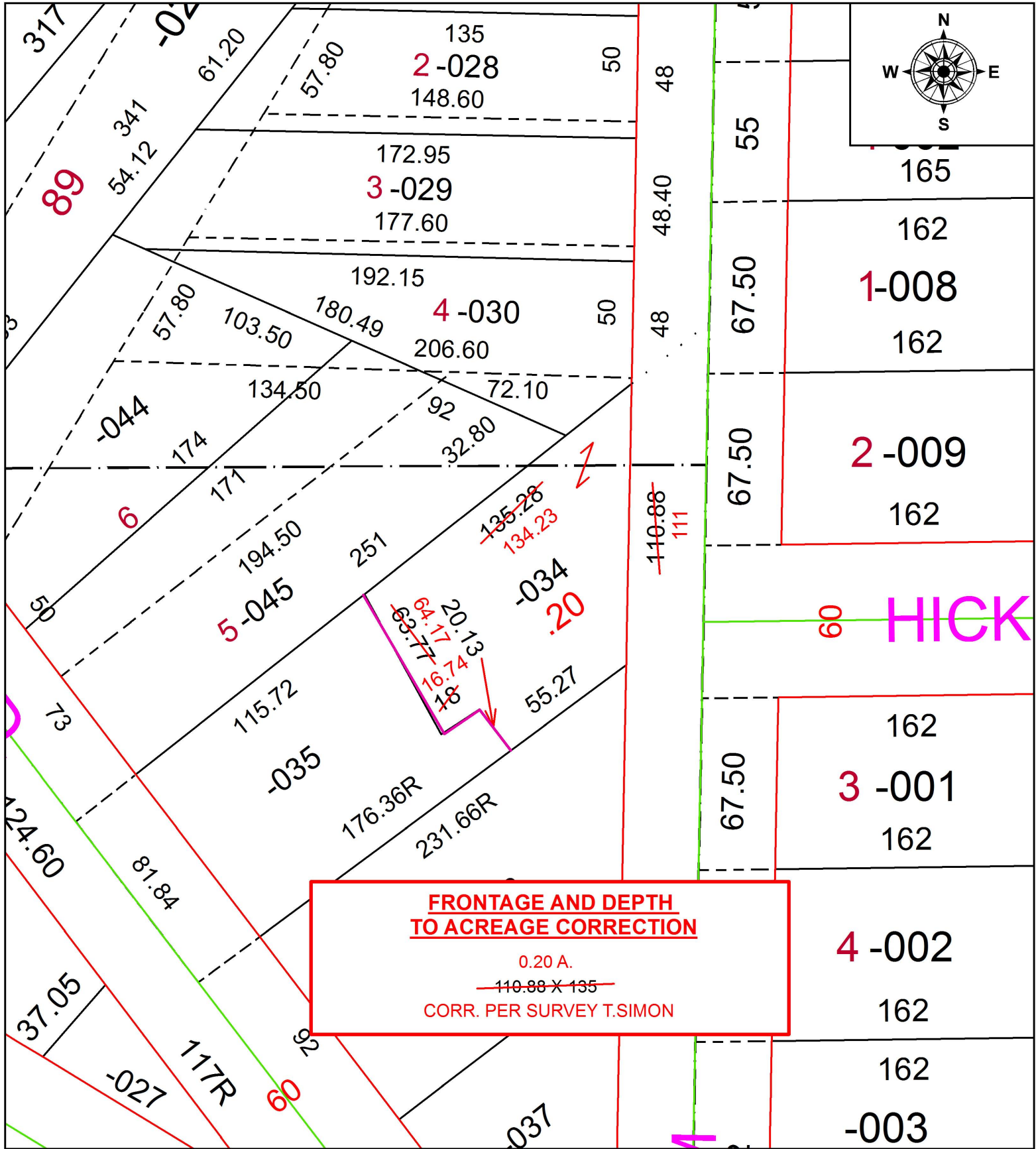


PARENT PARCEL: 16-00-001-111-034

CHILD PARCEL: XX-XX-XXX-XXX-XXX

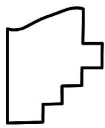
STARTING POINT: NORTHEAST CORNER OF S/L 139 IN RAWSONVILLE

18-03938-A



**FRONTAGE AND DEPTH
TO ACREAGE CORRECTION**

0.20 A.
~~110.88 X 135~~
 CORR. PER SURVEY T.SIMON



SPLITS/DEEDS PROCESSED
 LORAIN COUNTY TAX MAP DEPARTMENT
 226 MIDDLE AVE. ELYRIA, OH

SURVEYED BY: THOMAS A. SIMON
 CLOSURE: 1: 112,451
 MAP PAGE(S): 16-00-001
 APPROVED BY: RRM DATE: 8-6-18
 SCALE: 1" = 50 PRIOR INSTRUMENT: 20120420591