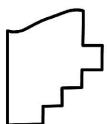
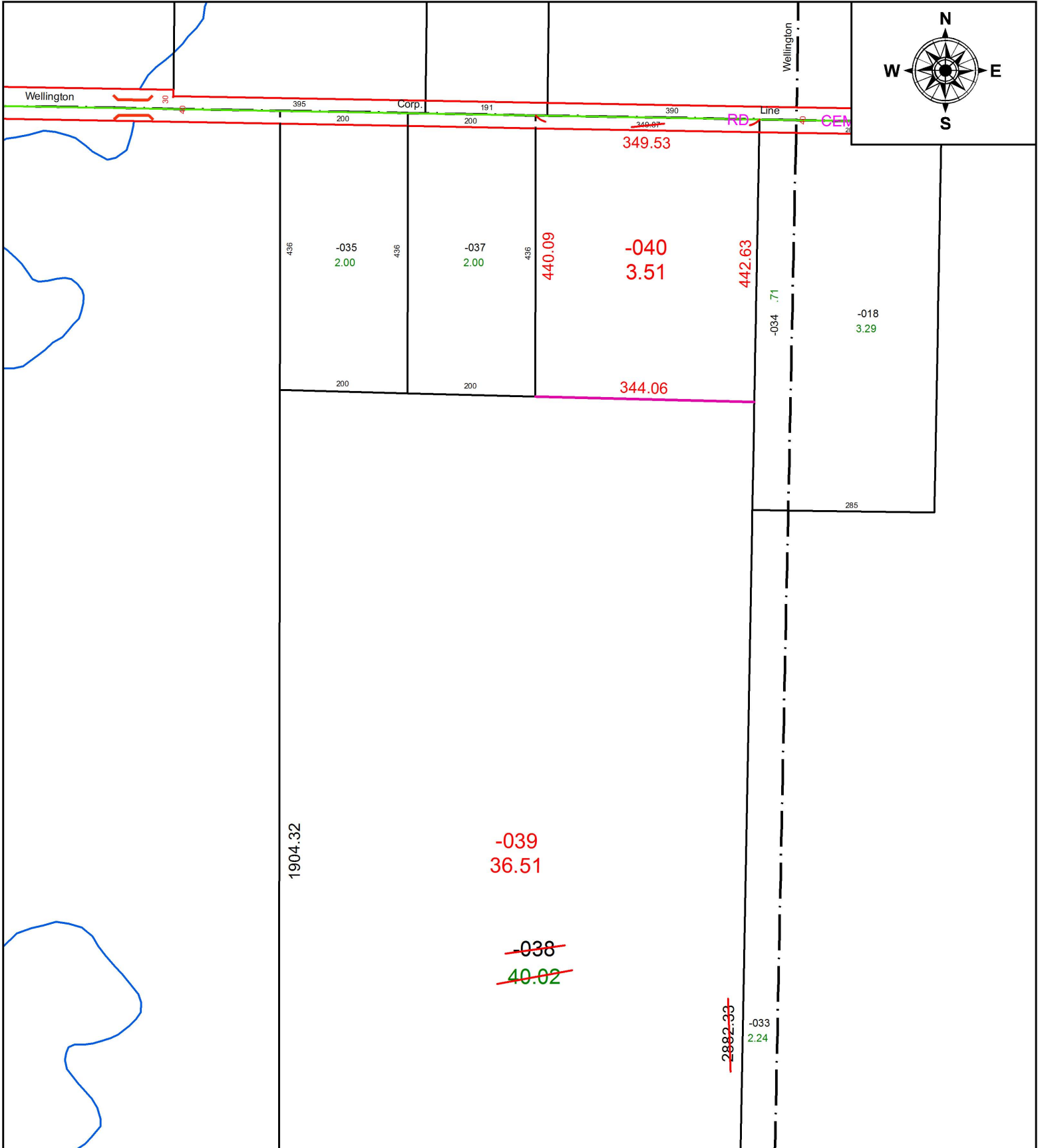


PARENT PARCEL: 18-00-023-000-038

CHILD PARCEL: 18-00-023-000-039, -040

STARTING POINT: NORTHEAST CORNER OF O.L.23

19-03937



SPLITS/DEEDS PROCESSED
 LORAIN COUNTY TAX MAP DEPARTMENT
 226 MIDDLE AVE. ELYRIA, OH

SURVEYED BY: ADAM E. WEAVER
 CLOSURE: 1:524,425
 MAP PAGE(S): 18-00-023
 APPROVED BY: RRM DATE: 2-15-19
 SCALE: 1" = 200 PRIOR INSTRUMENT: 20150536214