

PARENT PARCEL: 09-00-095-102-042

CHILD PARCEL: XX-XX-XXX-XXX-XXX

STARTING POINT: INTERSECTION OF C/L OF LINCOLN ST. AND C/L OF PROFESSOR ST.

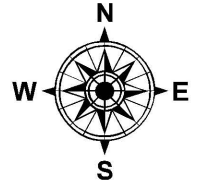
18-03936-C

FRONTAGE AND DEPTH CORRECTION

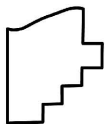
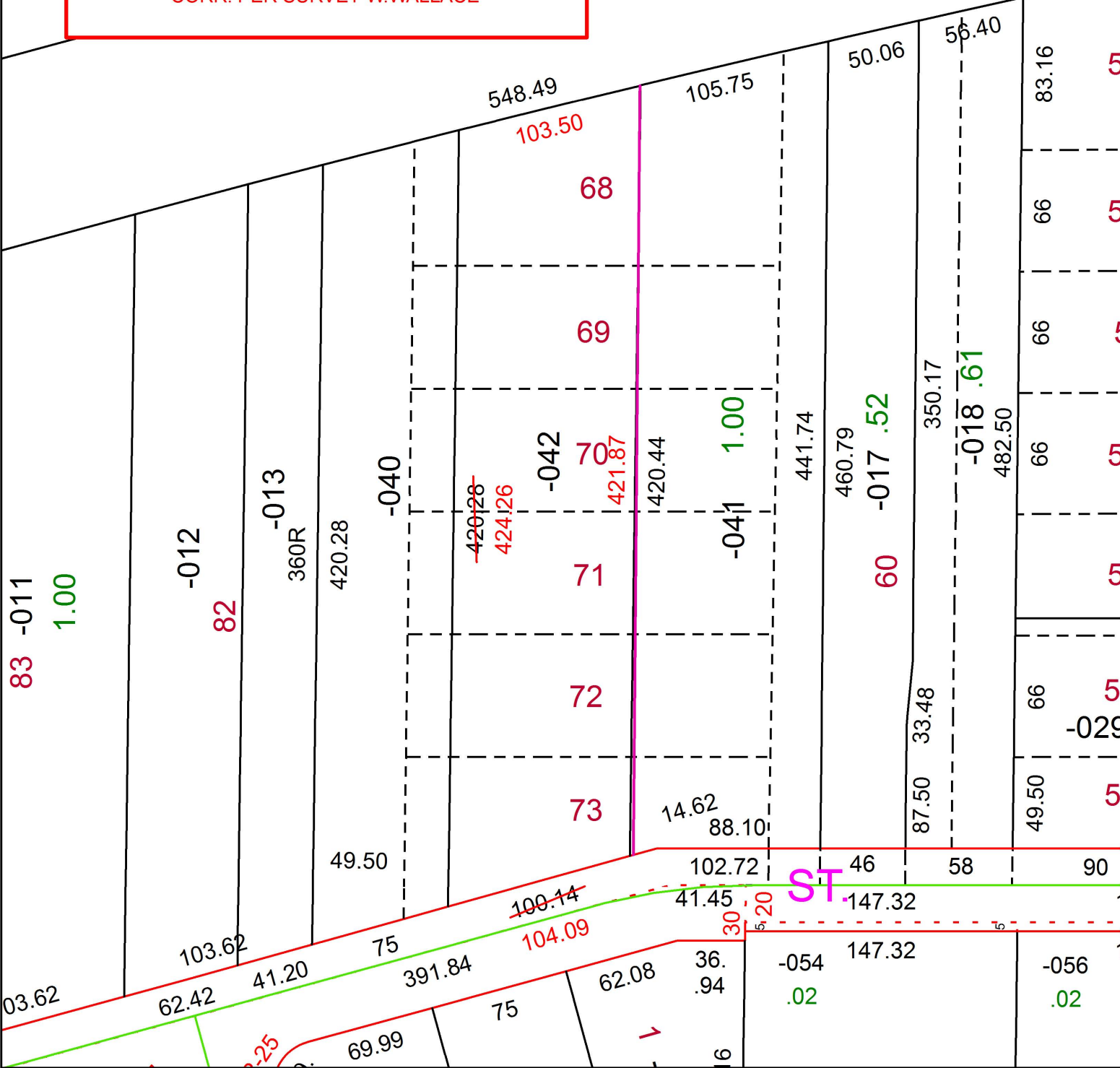
104.09 X 424.26

~~100.14 X 420~~

CORR. PER SURVEY W.WALLACE



4022.14



SPLITS/DEEDS PROCESSED
LORAIN COUNTY TAX MAP DEPARTMENT
226 MIDDLE AVE. ELYRIA, OH

SURVEYED BY: WILLIAM R. WALLACE
CLOSURE: 1: 280,883
MAP PAGE(S): 9-00-095
APPROVED BY: RRM DATE: 8-1-18
SCALE: 1" = 75 PRIOR INSTRUMENT: 20130484296