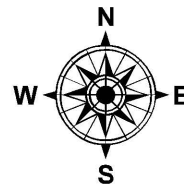


PARENT PARCEL: 06-24-038-104-015

CHILD PARCEL: 06-24-038-104-016 THRU -022

STARTING POINT: NORTHEAST CORNER OF LAND CONVEYED TO CITIES SERVICE OIL CO. (DV 252/298)

18-03934-U



UNCOMBINATION

~~06-24-038-104-015~~
~~300 X 599.19~~

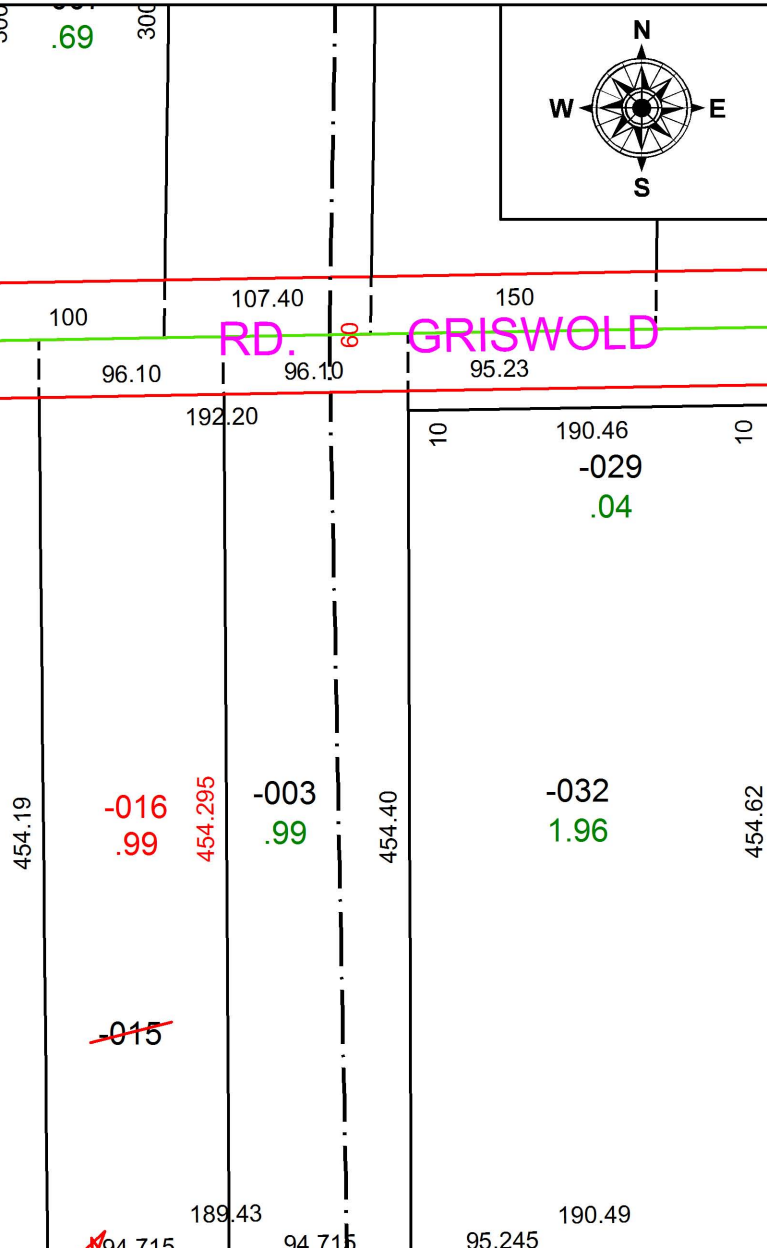
06-24-038-104-016 06-24-038-104-017
0.99 A. 50 X 145

06-24-038-104-018 06-24-038-104-019
50 X 145 50 X 145
06-24-038-104-020 06-24-038-104-021
50 X 145 50 X 145
06-24-038-104-022
50 X 145

-001
5.00

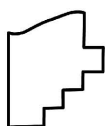
104

RD. GRISWOLD



ST. 50

ST. 50th.



SPLITS/DEEDS PROCESSED
LORAIN COUNTY TAX MAP DEPARTMENT
226 MIDDLE AVE. ELYRIA, OH

SURVEYED BY: N/A
CLOSURE: N/A
MAP PAGE(S): 6-43
APPROVED BY: RRM DATE: 7-30-18
SCALE: 1" = 100 PRIOR INSTRUMENT: 20180680349