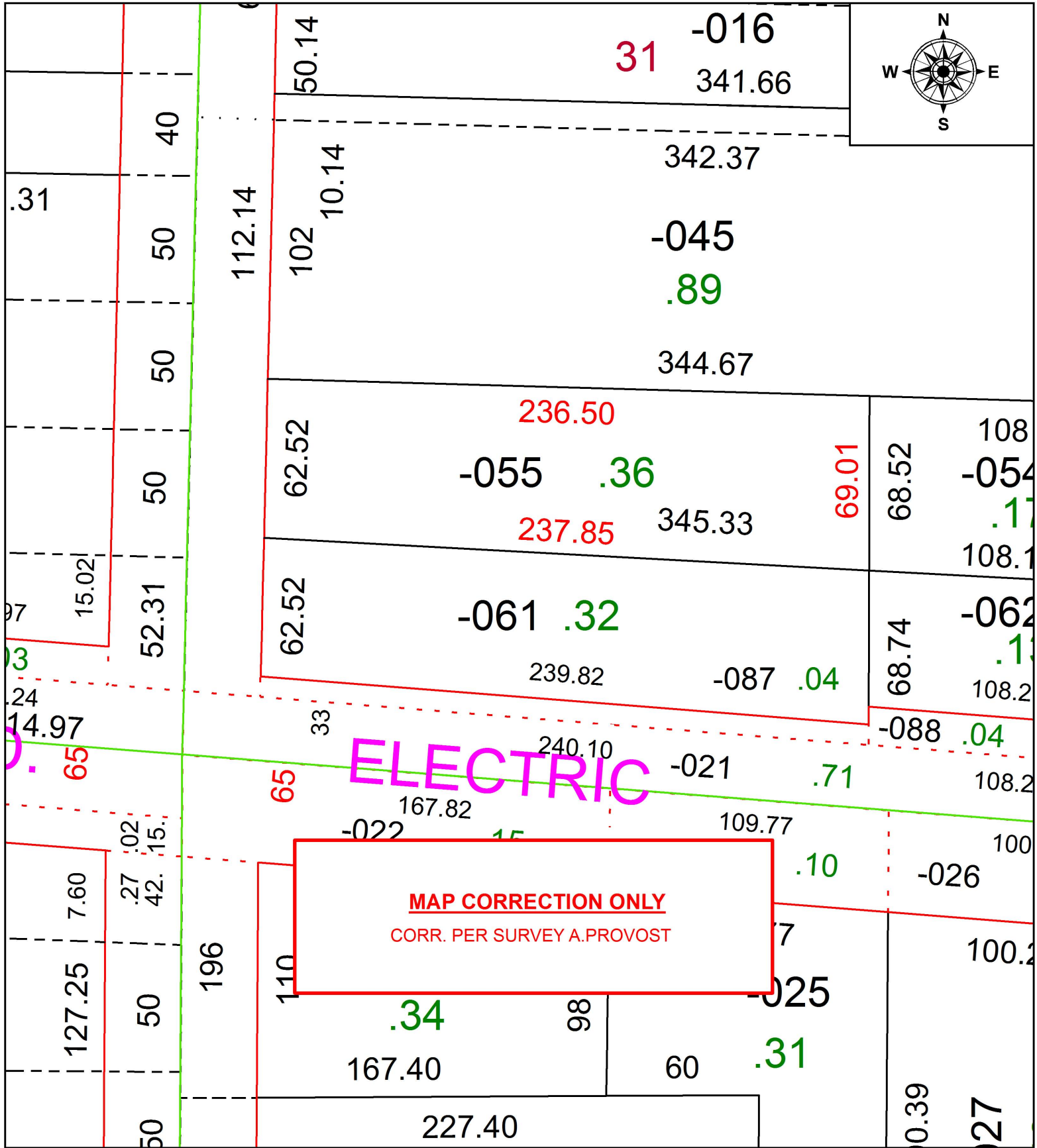


PARENT PARCEL: 04-00-019-112-055

CHILD PARCEL: XX-XX-XXX-XXX-XXX

STARTING POINT: NORTHWEST CORNER OF S/L 33 IN SUNSET PARK ALLOTMENT

18-03932-C



SPLITS/DEEDS PROCESSED
 LORAIN COUNTY TAX MAP DEPARTMENT
 226 MIDDLE AVE. ELYRIA, OH

SURVEYED BY: ANDREW R. PROVOST
 CLOSURE: 1: 81,183
 MAP PAGE(S): 4-00-019
 APPROVED BY: RRM DATE: 7-26-18
 SCALE: 1" = 50 PRIOR INSTRUMENT: 20120402833