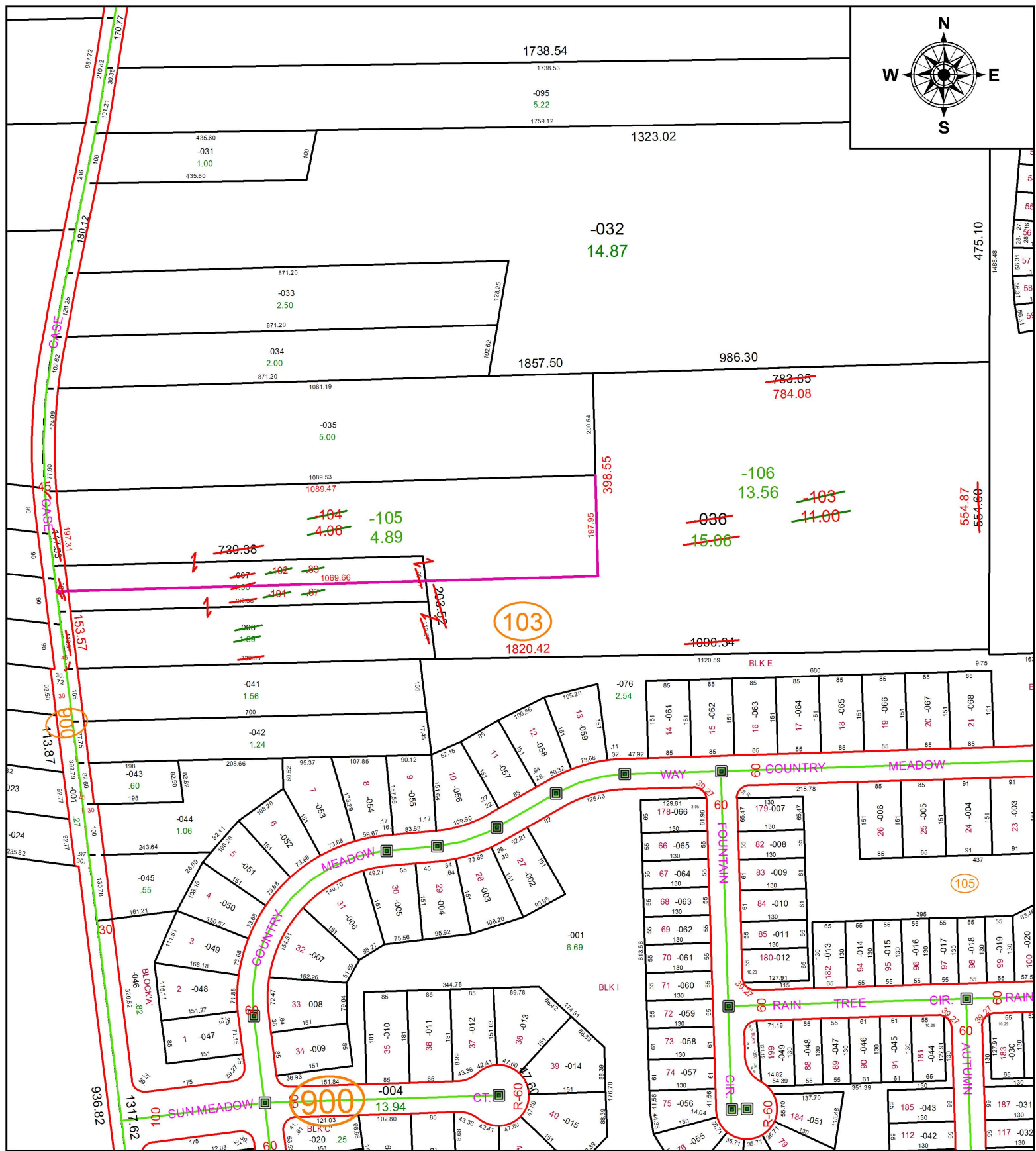
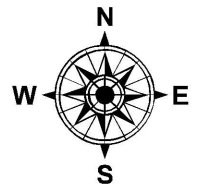


PARENT PARCEL: 07-00-043-103-036, -097, -098

CHILD PARCEL: 07-00-043-103-101 THRU -106

STARTING POINT: INTERSECTION OF C/L OF CASE RD. AND C/L OF BARRES RD.

19-03929



103
1820.42

105

900
13.94

SPLITS/DEEDS PROCESSED

LORAIN COUNTY TAX MAP DEPARTMENT
226 MIDDLE AVE. ELYRIA, OH

SURVEYED BY: THOMAS A. SIMON

CLOSURE: 1:562,998

MAP PAGE(S): 7-00-043

APPROVED BY: RRM DATE: 2-1-19

SCALE: 1" = 250

PRIOR INSTRUMENT: 20140525393